

# CERTIFIED CORNER RECORDATION

**Corner SW SEC. COR. Sec. 25 T. 36 N R. 28 W P.M., MT. Lincoln County**

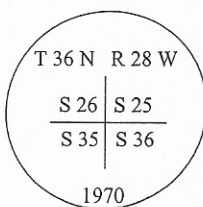
- I. 1903 G.L.O. original subdivision survey of T36N R28W by A. L. Rinearson et al: Set a stone and four bearing trees.  
 A tamarack, 6 ins. diam., bears N 83°45'E, 59 lks. dist., mkd. T36N R28W S25 BT.  
 A fir, 5 ins. diam., bears S 60°E, 45 lks. dist., mkd. T36N R28W S36 BT.  
 A fir, 16 ins. diam., bears S 36 1/2°W, 29 lks. dist., mkd. T36N R28W S35 BT.  
 A fir, 14 ins. diam., bears N 64°W, 78 lks. dist., mkd. T36N R28W S26 BT.

1969 B.L.M. remonumentation by Roy G. Leedy: The cor. of secs. 25, 26, 35 and 36, monumented with a limestone, 16 x 12 x 6 ins., firmly set, mkd. 1 notch on the S. and 1 notch on the E. edges, and witnessed by the remains of the original bearing trees:

- A larch stump, 18 ins. diam., bears N 73 3/4°E, 59 lks. dist., mkd. T36N R28W S25 BT. (Record: N 83 3/4°E, 9 lks.)
- A fir snag, 22 ins. diam., bears S 20°E, 145 lks. dist., mkd. T36N R. (Record: S 60°E, 45 lks.)
- A fir stump, 25 ins. diam., bears S 46 1/2°W, 129 lks. dist., mkd. R28W S35 BT. (Record: S 36 1/2°W, 29 lks.)
- A fir stump, 18 ins. diam., bears N 64°W, 78 lks. dist., mkd. W S26 BT.

At the corner point

Set an iron post, 30 ins. long, 2 1/2 ins. diam., 24 ins. in the ground., with brass cap marked:



from which the new bearing trees:

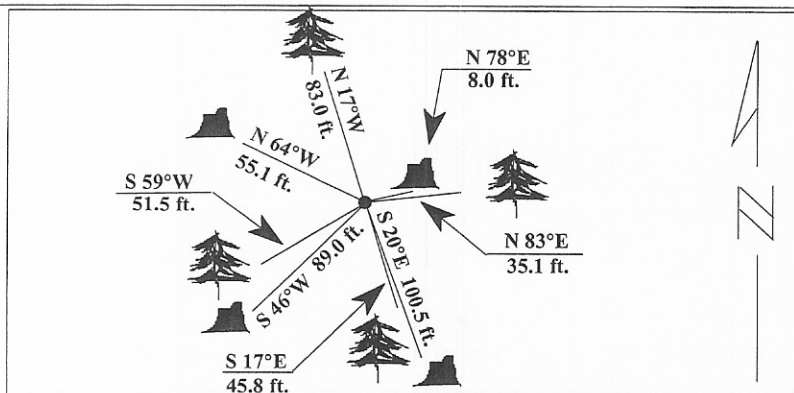
- A fir, 8 ins. diam., bears N 83°E, 52 lks. dist., mkd. T36N R28W S25 BT.
- A fir, 8 ins. diam., bears S 14 1/4°E, 69 lks. dist., mkd. T36N R28W S36 BT.
- A fir, 6 ins. diam., bears S 58 1/2°W, 78 lks. dist., mkd. T36N R28W S35 BT.
- A fir, 12 ins. diam., bears N 17 3/4°W, 124 lks. dist., mkd. T36N R28W S26 BT.

Bury the original stone alongside the iron post.

- II. Found an iron pipe., 2 1/2 ins. diam., 12 ins. above ground, firmly set, with a 3 1/4 in. daim. brass cap mkd. as shown above, no date is stamped on the cap, from which:

- A fir, 11 ins. diam., bears N 83°E, 35.1 ft. (53.2 lks.) dist., mkd. with visible scribe marks.
- A fir, 10 ins. diam., bears S 17°E, 45.8 ft. (69.4 lks.) dist., mkd. with a healed face.
- A fir, 10 ins. diam., bears S 59°W, 51.5 ft. (78 lks.) dist., mkd. with a healed face.
- A fir, 13 ins. diam., bears N 17°W, 83.0 ft. (125.7 lks.) dist., mkd. with visible scribe marks.
- A stump, bears N 78°E, 8.0 ft. (12 lks.) dist., with W S25 visible. (Record: N 83°45'E, 59 lks.)
- A fir stump, 24 ins. diam., bears S 20°E, 100.5 ft. (152.3 lks.) dist., mkd. T36N R. (Record: S 60°E, 45 lks.)
- A fir stump, bears S 46°W, 89 lks. dist., with 8W S35 B visible. (Record: S 36 1/2°W, 29 lks.)
- A stump, bears N 64°W, 55.1 ft. (83.5 lks.) dist., mkd. with S26 BT visible. (Record: 78 lks.)

Painted red bands around the bearing trees and attached Land Survey Monument and Bearing Tree signs.  
 Magnetic Declination: 20° East.



**SKETCH OF CORNER**

CERTIFICATION

I, Thomas M. Hommel  
certify the information shown herein is true and correct.

Signature Ground Party Chief

I, Ronald A. Pearson  
certify that this Corner Record correctly represents work performed by me or under my direction in compliance with the "Corner Recordation Act" (70-22-101, et seq., M.C.A.)

Signature of Surveyor & Seal

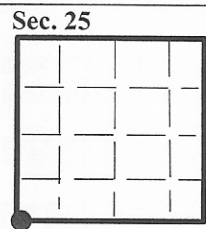
Date: 1/30/96

Reg. No.: 9008LS

Employer U.S. FOREST SERVICE

Office of Clerk and Recorder, County of LINCOLN. This "corner record" was filed for record on AUG 21, 1997 was noted on the cross-index plat and is assigned page No. 9909 in book No. \_\_\_\_\_

CORAL M. CUMMINGS By DLB  
 County Official



● - corner this sheet