

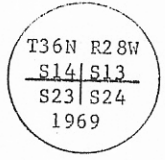
**INSTRUCTIONS**

1. Original and/or subsequent record used to evaluate the corner position.
2. Description of evidence found, note discrepancies in the record, state method of establishing lost or obliterated corners.
3. Description of monument and accessories set to perpetuate the corner position.
4. Sketch of corner, show all pertinent data which can best be shown in a sketch example, corner marking, topography ties, position of accessories, etc.
5. Certification must be signed and sealed by Land Surveyor registered in the State of Montana.
6. Fill in Cross Index & Section Diagram at bottom of sheet.

**CERTIFIED CORNER RECORDATION**

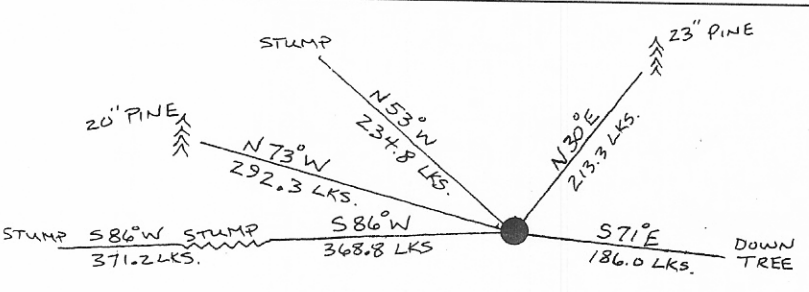
Corner of Secs. 13,14,23, & 24 T. 36N R. 28W P.M.M. Lincoln County

- I. 1903 GLO Record: Set a porphyry stone, 16 x 10 x 6 ins., 11 ins. in the ground, for cor. of secs. 13,14,23, and 24, mkd. the stone and mkd. 4 bearing trees.
- 1969 BLM Remonumentation Record: The cor. of secs. 13,14,23, and 24, monumented with a porphyry stone, 16 x 10 x 6 ins., loosely set, mkd. 1 notch on the E., and 3 notches on the S. edges, and witnessed by the remains of the original bearing trees:
- A pine, 18 ins. diam., bears N.29 1/4°E., 212 lks. dist., mkd. with an overgrown blaze.
  - A stump, bears S.87°W., 368 lks. dist., mkd. with an overgrown blaze.
  - A stump, bears N.52 3/4°W., 234 lks. dist., mkd. with an overgrown blaze.
- At the corner point:  
Set an iron post, 30 ins. long, 2 1/2 ins. diam., 24 ins. in the ground, with a brass cap mkd.:



- from which the following new references:
- A pine, 14 ins. diam., bears S.86 1/2°W., 371 lks. dist., mkd. T36N R28W S23 BT.
- Bury the original stone alongside and raise a collar of stone, 2 ft. diam., around the iron post.
- 1981 Marquardt Recordation: Found BLM brass cap, no perpetuation work was done.

- II. Found a BLM monument, protruding 10 ins. above ground, with a brass cap marked as described in the BLM record, from which the following references:
- A pine, 23 ins. diam., bears N.30°E., 213.3 lks. dist., scribing overgrown.
  - A downed tree, bears S.71°E., 186 lks. dist., scribing visible.
  - A stump, 24 ins. diam., bears S.86°W., 368.8 lks. dist., scribing visible.
  - A stump, 19 ins. diam., bears S.86°W., 371.2 lks. dist., scribing visible.
  - A stump, 28 ins. diam., bears N.53°W., 234.8 lks. dist., no visible scribing.
- III. Established the following new references:
- A pine, 20 ins. diam., bears N.73°W., 292.3 lks. dist., mkd. T36N R28W S14 BT.
- Set a guard post, with a "Survey Marker" decal attached, 2.3 ft. South from corner.
- Painted a red band around each bearing tree and attached "Land Survey Monument" and "Bearing Tree" signs.



**SKETCH OF CORNER**

CERTIFICATION

I, Gary Crismon  
certify the information shown herein is true and correct.

*Gary Crismon*  
Signature of Party Cited

I, Thomas C. HALL  
certify that this Corner Record correctly represents work performed by me or under my direction in compliance with the "Corner Recordation Act" (70-2-301, et seq., M.C.L.A.)

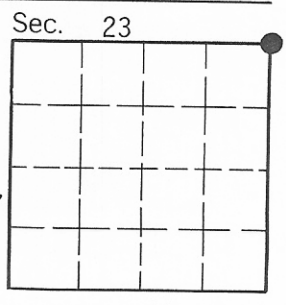
*Thomas C. Hall*  
Signature of Surveyor & Seal

Date: 9/85 Reg. No. 6612 S

Employer: U.S.F.S.

Office of Clerk and Recorder, County of Lincoln. This "corner record" was filed for record on Oct 7, 1985 was noted on the cross-index plat and is assigned page No. 3098, in book No. \_\_\_\_\_

*Janet B. Segal by Bill Buschhoff*  
County Official



Cross Index No. N-21 T. 36N R. 28W P.M.M. • - corner this sheet