

CERTIFIED CORNER RECORDATION

Corner N 1/4 Sec. 1 T. 36N R. 28W P.M., MT Lincoln County

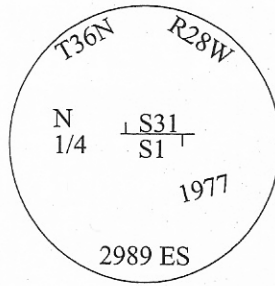
I. 1893 G.L.O. Original Record by Peter McCardell et. al.: Set a post, 3 ft. long, 3 ins. square, 24 ins. in the ground, for the standard 1/4 sec. cor. mkd. "SC 1/4 S" on N. face.

Established two bearing trees:

A pine, 40 ins. diam., bears N06°W, 50 lks. dist., mkd. "SC 1/4 S BT".

A pine, 10 ins. diam., bears S26°30'W, 10 lks. dist., mkd. "SC 1/4 S BT".

1977 & 1981 Certified Corner Recordations by D.K. Marquardt Registration No. 2989 ES: No evidence of corner found, set by single proportion, an iron pipe, 36 ins. long, 2 in. diam., 30 ins. in the ground, with brass cap, mkd. as shown:



Established two new bearing trees:

A pine, 8 ins. diam., bears S12°E, 29.26 ft. dist. from the corner.

A pine, 6 ins. diam., bears N36°E, 40.11 ft. dist. from the corner.

II. Found a 2 in. diam. iron pipe, with a 2 in. diam. brass cap, firmly set, protruding 3 ins. above the ground, mkd. as shown above. Cap not mkd. with "CC", as stated in Corner Recordation.

from which:

A pine, 10 ins. diam., bears S12°E, 29.3 ft. dist., with visible scribe.

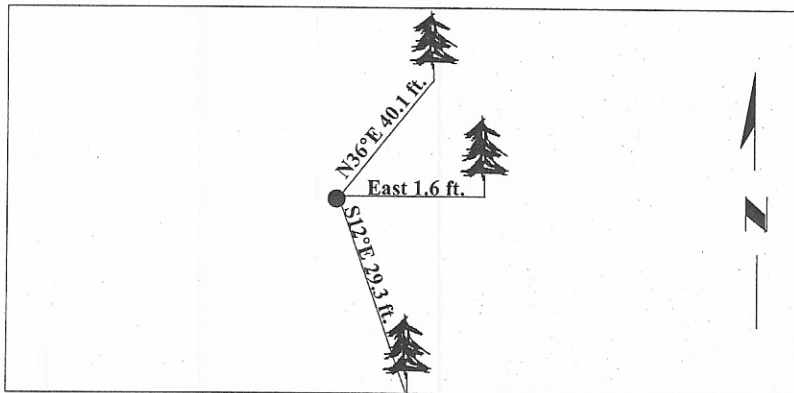
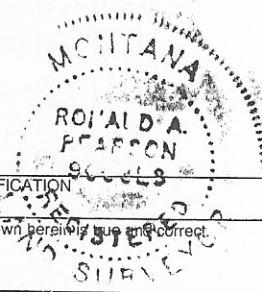
A pine, 8 ins. diam., bears N36°E, 40.1 ft. dist., with visible scribe.

III. Established one new bearing tree:

A pine, 6 ins. diam., bears East, 1.6 ft. dist., with a Land Survey Monument sign attached.

Painted bearing trees and attached Land Survey Monument and Bearing Tree signs.
Corner is located South, 12.0 ft. dist. from the centerline of dirt road.

Magnetic Declination: 20° East.



SKETCH OF CORNER

I, Mark Federman
CERTIFICATION
certify the information shown herein is true and correct.

I, Ronald A. Pearson
certify that this Corner Record correctly represents work performed by me or under my direction in compliance with the "Corner Recordation Act" (70-22-101, et seq., M.C.A.)

[Signature]
Signature of Surveyor & Seal

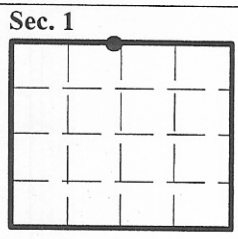
Date: 04/15/97

Reg. No.: 9008LS

Employer: U.S. FOREST SERVICE

Office of Clerk and Recorder, County of LINCOLN. This "corner record" was filed for record on JULY 31, 1997 was noted on the cross-index plat and is assigned page No. 9871 in book No. _____

CORAL M. CUMMINGS
County Official By ALB



● - corner this sheet