

# CERTIFIED CORNER RECORDATION

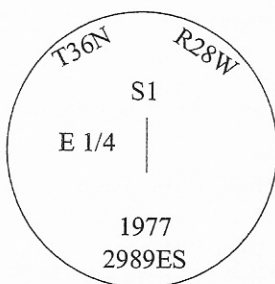
**Corner**    **E 1/4**        **Sec. 1**        **T. 36N**    **R. 28W**    **P.M., MT**    **Lincoln**    **County**

I.    1904 Resurvey and Reestablishment Record by Abraham L. Rinearson et. al.: Set a fir post, 3 ft. long, 3 ins. square, 24 ins. in the ground, for 1/4 sec. cor. of sec. 1, mkd. "1/4 S1" on W. face.

Established two bearing trees:

- A pine, 8 ins. diam., bears N77 1/2°E, 62 lks. dist., mkd. "1/4 S6 BT".
- A pine, 14 ins. diam., bears S57°W, 121 lks. dist., mkd. "1/4 S1 BT".

1977 & 1981 Certified Corner Recordations by D.K. Marquardt, Registration No. 2989 ES: No evidence of original record found, set by record distance from the W 1/4 cor. of sec. 6, T36N R27W, a pipe, 36 ins. long, 2 in. diam., 28 ins. in the ground, mkd. as shown below:



Established two new bearing trees:

- A pine, 6 ins. diam., bears S34°E, 32.7 ft. dist., mkd. "E 1/4 S1 BT".
- A pine, 10 ins. diam., bears N81°W, 56.3 ft. dist., mkd. "E 1/4 S1 BT".

See Certificate of Survey No.s 388 and 541 for reference to the corner.

II. Found a 2 in. diam. iron pipe, firmly set, protruding 3 ins. above the ground, with a 2 1/2 in. diam. brass cap, mkd. as described above.

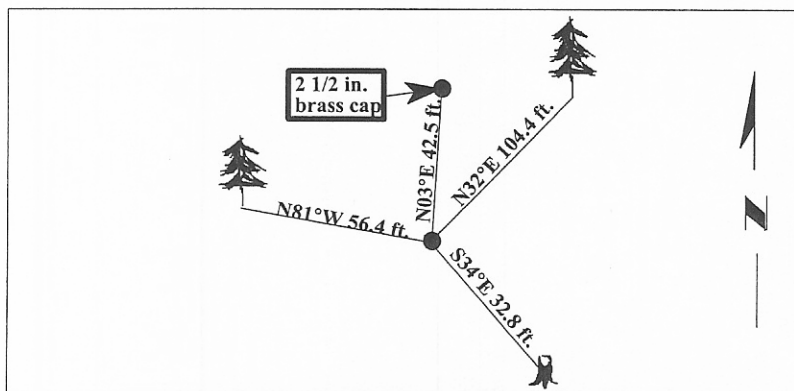
from which:

- An aluminum cap, for W 1/4 S6, (T36N R27W), bears N03°E, 42.5 dist. from the corner. (GLO-record distance to the W1/4 of sec. 6 is 42.9 ft.)
- A pine, 13 ins. diam., bears N32°E, 104.4 ft. dist., with visible scribe. (W 1/4 S6 BT)
- A broken stump, bears S34°E, 32.8 ft. dist., with a healed face. (1977-record)
- A pine, 14 ins. diam., bears N81°W, 56.4 ft. dist., with a healed face. (1977-record)

Corner falls approximately 16 ft. of centerline of road.

III. Painted bearing trees and attached Land Survey Monument and Bearing Tree signs.

Magnetic Declination: 20° East.



**SKETCH OF CORNER**

CERTIFICATION

I, Mark Federman  
certify the information shown herein is true and correct.

---

I, Ronald A. Pearson  
certify that this Corner Record correctly represents work performed by me or under my direction in compliance with the "Corner Recordation Act" (70-22-101, et seq., M.C.A.)

*Ronald A. Pearson*  
 Signature of Surveyor & Seal

Date: 04/10/97

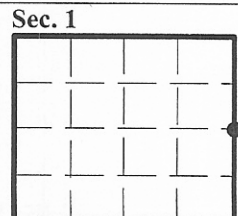
Reg. No.: 9008LS

Employer: U.S. FOREST SERVICE



Office of Clerk and Recorder, County of LINCOLN. This "corner record" was filed for record on JULY 31, 1997 was noted on the cross-index plat and is assigned page No. 9866 in book No. \_\_\_\_\_

CORAL M. CUMMINGS    *By DUB*  
 County Official



● - corner this sheet