

CERTIFIED LAND CORNER RECORDATION

DESCRIPTION OF CORNER EVIDENCE FOUND, AND ORIGINAL RECORD (IF KNOWN)

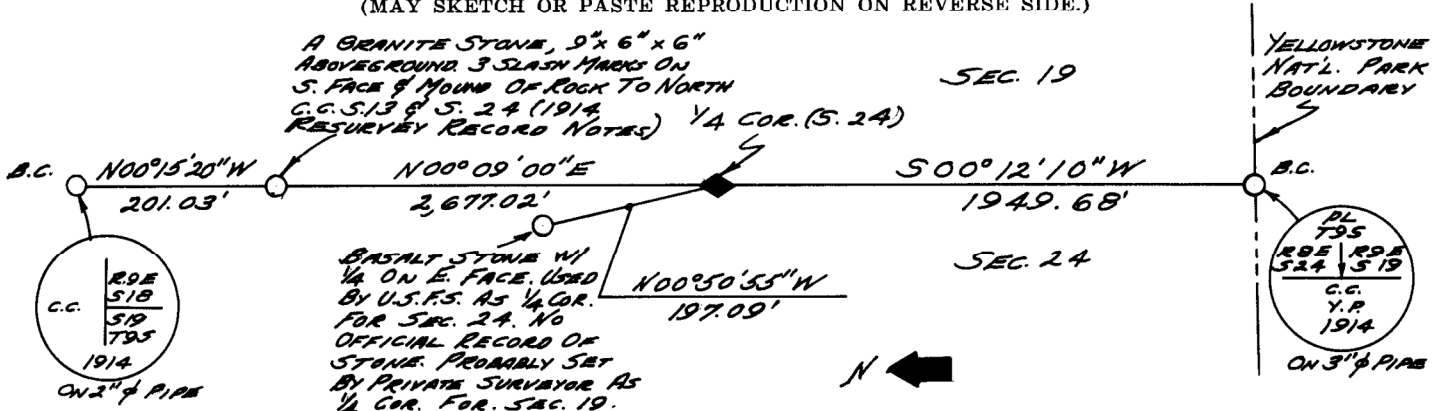
Found a 8"x6"x14" granite stone with 1/4 chiseled on one face in a mound of rock supporting a fence post approximately 12' north of the record position. No accessory monuments found.
 The Record states: August 25, 1914, Retracement of East Boundary of T. 9 S., R. 8 E. --- 40.56 Chains - Fall 10 lks. East of the 1/4 sec. cor., which is a granite stone, 8x6x10 ins. above ground, firmly set, marked as described by the Surveyor General; I rebuild the mound of stone, 2 ft. base, 1 1/2 ft. high, W. of cor. This 1/4 sec. cor. will hereafter refer to sec. 24 only. The true bearing of this half mile is S. 0°09' W.



DESCRIPTION OF MONUMENT AND ACCESSORIES ESTABLISHED TO PERPETUATE THE ORIGINAL LOCATION OF THIS CORNER:

Date of work: 6/9/66
 I set a 5/8" diam. x 24" reinforcing bar with a Surv Kap flush with the ground and stamped as shown. Point established by single-proportionate measurement between the c.c. for Secs. 13 and 24 to the north and the c.c. for Secs. 24 and 19 and Y.N.P. boundary to the south and on the record bearing of S. 0° 09' W. from the c.c. for Secs. 23 and 24. Set the original granite stone with 1/4 on the west face along the west side of the point and built a 3' diam. mound of rock to the west of the stone. References:
 N 00°50'55" W a dist. of 197.09' to a 11"x14"x9" basalt stone with 1/4 on the east face and a 4' diam. mound of stone alongside and around a wood post with a U.S.F.S. tag scribed E 1/4 24, 3/23/54, Morrison. No official record of such a stone being set, assumed to be stone set by a private surveyor for Sec. 19, T. 9 S., R. 9 E., M.P.M.

SKETCH, WITH COURSE AND DISTANCE TO ADJACENT CORNERS IF DETERMINED IN THIS SURVEY. (MAY SKETCH OR PASTE REPRODUCTION ON REVERSE SIDE.)



Surveyor's Seal



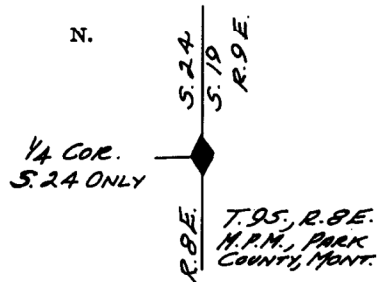
I, Thomas J. Hallin certify that the information shown herein is true and correct.

Signature of Ground Party Chief

I, _____ certify that I have carefully performed or reviewed the work done on the diagrammed corner as reported on this recordation form and approve the same.

Thomas J. Hallin
 Signature of Surveyor

DIAGRAM OF CORNER:



= Corner recorded on the sheet

287 ES
 Registration Number

Office of Clerk and Recorder, County of Park 2:00 o'clock P.M. 108675

This "corner record" was filed for record on the 2nd day of March 1967, was noted on the cross-index plat and is assigned page No. one, in book No. one

County Clerk & Recorder
Margaret Monreal deputy
 Cross Index No. P-28 T. 9S R. 8E Mer.