

CERTIFIED LAND CORNER RECORDATION

DESCRIPTION OF CORNER EVIDENCE FOUND, AND ORIGINAL RECORD (IF KNOWN)

F'd. a garnet-schist stone measuring 15" x 8" x 6" with 1/4" chiseled on N. face, split by frost action and tipped over in an accessory mound of rock.

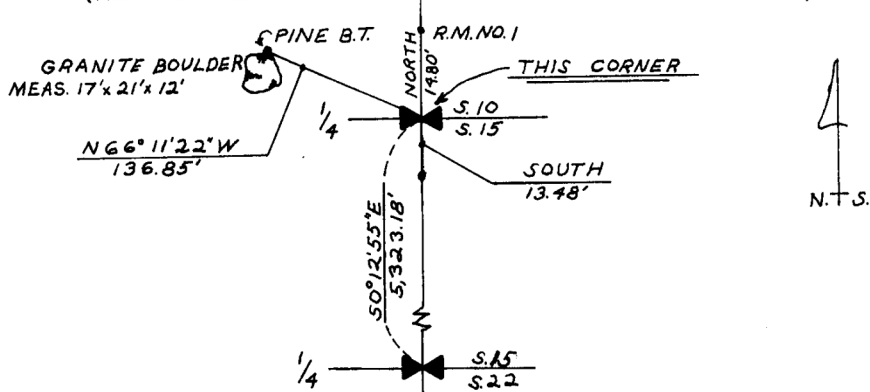
(Record: Surveyed by R. W. Page in July 1883 and retraced by Rigby and Street in August 1914. 1883: West on a true line bet. Secs. 10 and 15, same var. (19°E.), @ 40 chs., Set sandstone 16 x 10 x 5 in., 11 in. in the ground for 1/4 sec. cor. marked 1/4 on N. face and raised a mound of stone alongside. Pits impracticable. 1914: West bet. secs. 10 and 15, @ 40.45 chs., Fall 14 lks. North of the 1/4 sec. cor., which is a sandstone 6 x 4 x 8 ins. above ground, firmly set, marked and witnessed as described by the Surveyor General.)

DESCRIPTION OF MONUMENT AND ACCESSORIES ESTABLISHED
TO PERPETUATE THE ORIGINAL LOCATION OF THIS CORNER:

Date of work: 11-8-78

Set a 5/8" diam. x 24" long rebar with a stamped "Surv Kap" in place of original stone. Wired the original stone together and set it 6" aboveground a dist. of 0.60' N. of "Surv Kap" with 1/4 on the N. face. Set two 5/8" diam. x 24" rebars with "Surv Kaps" as R.M.'s as noted herein and marked a 9" diam. pine on the S.E. crown root 1/4, S10, B.T., with a 16d scaffold nail and flasher above the blaze for horiz. alignment and the same on the N. face for horiz. dist., affixed a "Marls" marker at breast height. The tree has grown around the N. face of a 17' x 21' x 12' granite glacial erratic (boulder) and forks into two trunks 4.4' aboveground. B.T. bears N66° 11' 22"W a dist. of 136.85'. "Surv Kaps" marked: (over)

SKETCH, WITH COURSE AND DISTANCE TO ADJACENT CORNERS IF DETERMINED IN THIS SURVEY.
(MAY SKETCH OR PASTE REPRODUCTION ON REVERSE SIDE.)



Surveyor's Seal



I, Fred Hall
certify that the information shown herein is true and correct.

Fred Hall
Signature of Ground Party Chief

I, Thomas J. Hallin
certify that I have carefully performed or reviewed the work done on the diagrammed corner as reported on this recordation form and approve the same.

Thomas J. Hallin
Signature of Surveyor

DIAGRAM OF CORNER:

N. 1/4 CORNER



T.9S., R.8E.

= Corner recorded on the sheet

287 ES.
Registration Number

152970

Office of Clerk and Recorder, County of Perth

This "corner record" was filed for record on the 6 day of December 1978, was noted on the cross-index plat and is assigned page No. 19, in book No. one

Fee - 50 cents

3 Form 125-7887

Margaret Inoual
County Official

Cross Index No. J-15 T. 9 S. R. 8 E. Mer.

Raised 2' diam. mounds of stone around all monuments set.

