

PH 12

CERTIFIED LAND CORNER RECORDATION

DESCRIPTION OF CORNER EVIDENCE FOUND, AND ORIGINAL RECORD (IF KNOWN)

ORIGINAL - N.E. location corner set a granite stone 28"x13"x8", 18" deep, marked 4-3995B for Corner No. 4. A 'X' (cross) on house marked B.O. 4-3995B bears S15°E 1½'. A 'X' (cross) on house marked B.O. 4-3995B bears N18°W. 13½'.

1979 - FOUND original stone buried and firmly seated. Top partly broken off but clearly marked on W. side 3995. At S15°E 1.5' from stone found original cross 'X' at NE corner base of log building and markings B.O. 4-3995B (on the North wall).

DESCRIPTION OF MONUMENT AND ACCESSORIES ESTABLISHED TO PERPETUATE THE ORIGINAL LOCATION OF THIS CORNER:

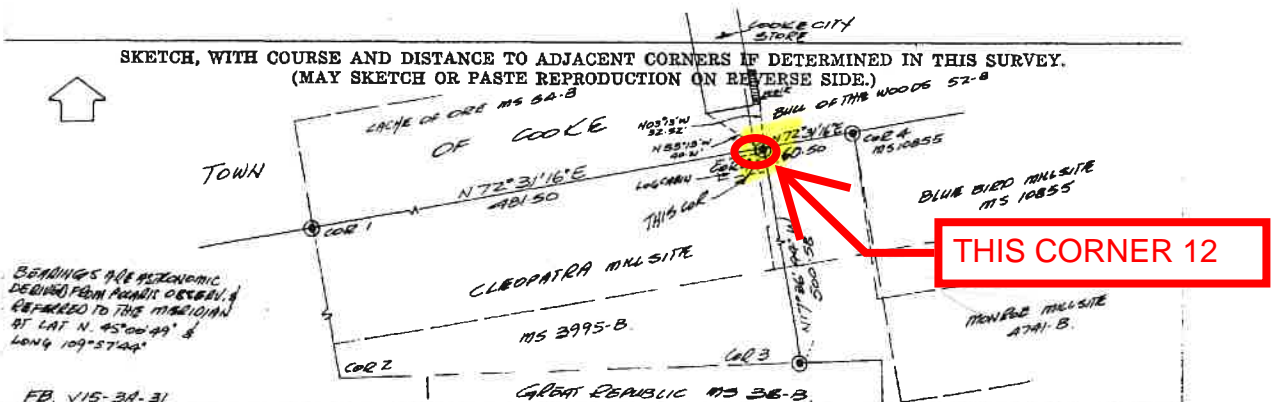
At the exact point at center of stone about 1.5' NW of 'X' mentioned. Set a 2½"x30" aluminum pipe 24" in the ground with the cap marked:

Date of work: July 26 1979

The original stone is buried East of the corner monument which is surrounded by a collar of stone. A 6' steel fence post is set 1½' SE.



SKETCH, WITH COURSE AND DISTANCE TO ADJACENT CORNERS IF DETERMINED IN THIS SURVEY. (MAY SKETCH OR PASTE REPRODUCTION ON REVERSE SIDE.)



THIS CORNER 12

Surveyor's Seal

I, T. J. Embrey certify that the information shown herein is true and correct.

T. J. Embrey
Signature of Ground Party Chief

I, James B. Spring certify that I have carefully performed or reviewed the work done on the diagrammed corner as reported on this recordation form and approve the same.

James B. Spring
Signature of Surveyor

DIAGRAM OF CORNER:



SEC 25, T9S, R14E
PARK COUNTY, MT.
= Corner recorded on the sheet

1535-S
Registration Number

163955

Office of Clerk and Recorder, County of Park

This "corner record" was filed for record on the 30th day of January, 1981, at 12:05 PM, was noted on the cross-index plat and is assigned page No. 19, in book No. ONE

Margaret Brunical
County Official

Form 123 - 45227

Fee 50[¢]

See special cross index

Cross Index No. 0:89 T. 9S R. 14E Mer.