

CERTIFIED LAND CORNER RECORDATION

DESCRIPTION OF CORNER EVIDENCE FOUND, AND ORIGINAL RECORD (IF KNOWN)

Cor. No. 4

A rhyolite stone, 5x15x24 ins., 16 ins. in the ground, for Cor. No. 4, mkd. 4-I-10815A; from which

A pine tree, 11 ins. diam., bears N. 21° W., 7.2 ft. dist., mkd. 4-I-10815A BT.

A pine tree, 11 ins. diam., bears S. 74° W., 23.8 ft. dist., mkd. 4-I-10815A BT

DESCRIPTION OF MONUMENT AND ACCESSORIES ESTABLISHED TO PERPETUATE THE ORIGINAL LOCATION OF THIS CORNER:

Date of work: SEP 4 1979

Recordation at Cor. #4, Idabelle 10815-A

Found no trace of the original corner stone. Found two original bearing trees.

14" pine S74°W, 23.8' mkd. 4-I-10815 A BT

14" pine N21°W, 7.2' mkd. 4-I-10815 A BT

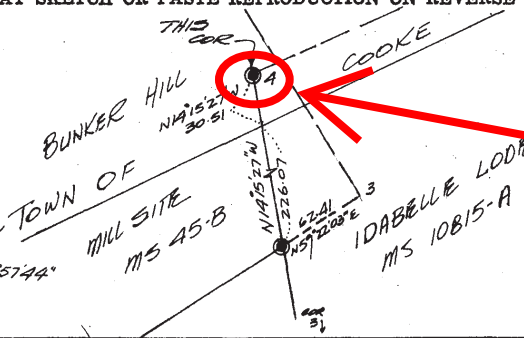
Made BT: 14" spruce, S20°E, 29.54' mkd. 4-I-10815 A BT

At the PI of original BT distances and bearings set a 2½"x30" al. pipe 24 ins. in the ground with the cap marked:

Set a 6' steel fence post 2' south of the corner monument.



SKETCH, WITH COURSE AND DISTANCE TO ADJACENT CORNERS IF DETERMINED IN THIS SURVEY. (MAY SKETCH OR PASTE REPRODUCTION ON REVERSE SIDE.)



THIS CORNER 34

BEARINGS ARE ASTROGNOMIC DERIVED FROM POLARIS OBSERVATION AND REFERRED TO THE MERIDIAN AT LAT. N. 45°00'49" LONG. W. 109°57'44"

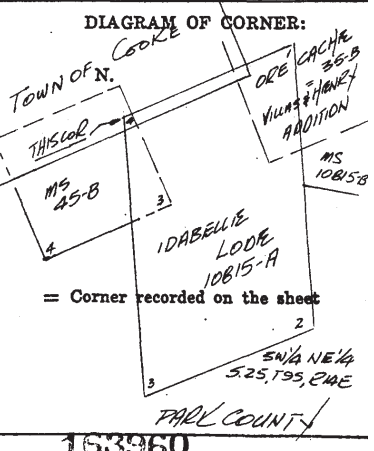
FB 15-4A-16

Surveyor's Seal

I, T.J. EMBREUS
certify that the information shown herein is true and correct.
T.J. Embreus
Signature of Ground Party Chief

I, James B. Spring
certify that I have carefully performed or reviewed the work done on the diagrammed corner as reported on this recordation form and approve the same.
James B. Spring
Signature of Surveyor

1535-S
Registration Number



Office of Clerk and Recorder, County of Park

This "corner record" was filed for record on the 30th day of January, 1981, was noted on the cross-index plat and is assigned page No. 2A, in book No. ONE.
Margaret Smokey
County Official

Form 125 - 45227 Fee 50¢
See special cross index
Cross Index No. LM, 14-15 T. 95 R. 14E Mer.