

PT#27

CERTIFIED LAND CORNER RECORDATION

DESCRIPTION OF CORNER EVIDENCE FOUND, AND ORIGINAL RECORD (IF KNOWN)

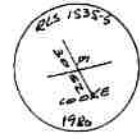
Set a pine post, 4 ft. long, 4½ ins. square, 2 ft. deep marked P.I. 3052-C7.

DESCRIPTION OF MONUMENT AND ACCESSORIES ESTABLISHED TO PERPETUATE THE ORIGINAL LOCATION OF THIS CORNER:

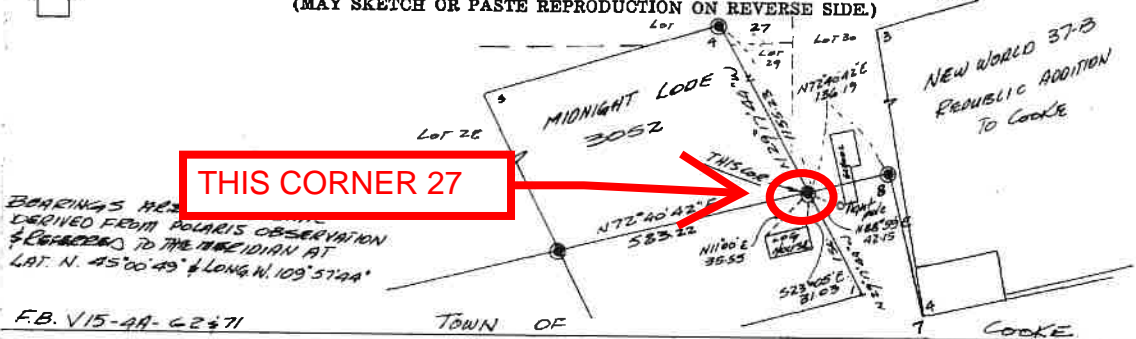
2 AUG 5 1980
Date of work: July 29 1980

Found no trace of original pine post. The school house mentioned as a bearing object from Corner #1 3052 was destroyed or moved many years ago, as was the case with the log buildings tied along the south boundary of 3052.

Historical records (see publications Cooke City Store) indicate that the present school was used as a private home at the time of this survey and it's location differs considerably. The P.I. is located by proportioning west from Corner 8 of Cooke. Theoretical Cor 1 3052 is at rec. distance. Set a 2½"x30" aluminum pipe 26" in the ground with the brass cap marked: Raised a collar of stone around the monument.



SKETCH, WITH COURSE AND DISTANCE TO ADJACENT CORNERS IF DETERMINED IN THIS SURVEY. (MAY SKETCH OR PASTE REPRODUCTION ON REVERSE SIDE.)



BEARINGS HEREIN DERIVED FROM POLARIS OBSERVATION & COMPARED TO THE MERIDIAN AT LAT. N. 45°00'43" & LONG. W. 109°57'24"

F.B. V15-4A-62471

Surveyor's Seal

I, T. J. EMPREUS
certify that the information shown herein is true and correct.
T. J. Empreus
Signature of Ground Party Chief

I, James B. Spring
certify that I have carefully performed or reviewed the work done on the diagrammed corner as reported on this recordation form and approve the same.
James B. Spring
Signature of Surveyor

DIAGRAM OF CORNER:

N.
SEE ABOVE
1/4
SE 1/4 NW 1/4 S. 25
T. 95, R. 14E

PARK COUNTY
= Corner recorded on the sheet

1535-S
Registration Number

163988

Office of Clerk and Recorder, County of Park

This "corner record" was filed for record on the 30th day of January, 1981, was noted on the cross-index plat and is assigned page No. 52, in book No. ONE

Form 125-45227 Fee 504
See special cross index

Clerk and Recorder
Park County, Montana
Margaret Monson
Cross Index No. KL 78 T. 95 R. 14E S. 25