

DTS
21-23

CERTIFIED LAND CORNER RECORDATION

DESCRIPTION OF CORNER EVIDENCE FOUND, AND ORIGINAL RECORD (IF KNOWN)

I set a post four feet long 8 ins. square two feet in the ground with mound of earth around it - and marked it - "C.C.1" for Corner No. 1 of the Townsite of Cooke.

DESCRIPTION OF MONUMENT AND ACCESSORIES ESTABLISHED TO PERPETUATE THE ORIGINAL LOCATION OF THIS CORNER:

Date of work: Aug 5 1980

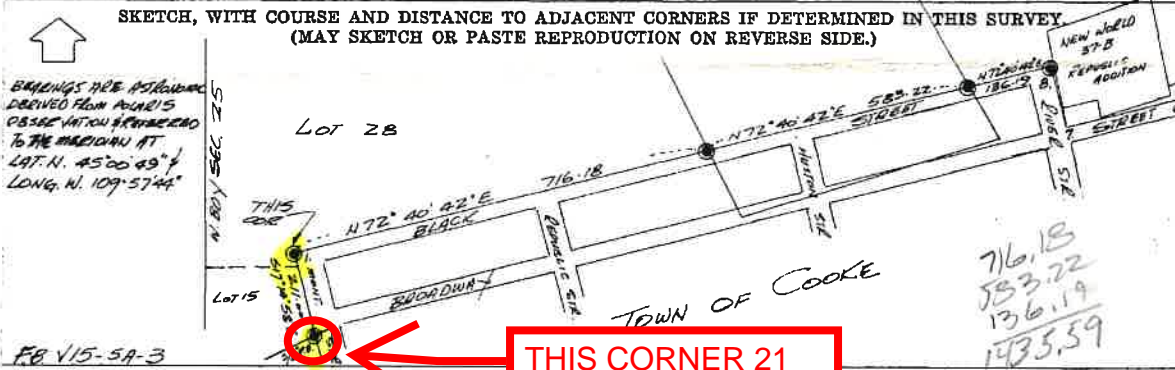
Found no trace of the original corner post, no BTs.
At the calculated corner location set a 2½"x30" aluminum pipe with the cap marked:

Made BTs: 18" spruce N52°30'W, 18.9', mkd 1 Cooke BT
20" spruce S63°W, 9.7', mkd 1 Cooke BT
20" fir S20°30'W., 24.5', mkd 1 Cooke BT

Raised a collar of stone around the corner monument and set a steel F.P. 1½' NW of the corner which is located on a steep sidehill to the south with spruce, fir and pine.



SKETCH, WITH COURSE AND DISTANCE TO ADJACENT CORNERS IF DETERMINED IN THIS SURVEY (MAY SKETCH OR PASTE REPRODUCTION ON REVERSE SIDE.)



Surveyor's Seal

I, T. J. EMBREUS
certify that the information shown herein is true and correct.

Signature of Ground Party Chief

I, James B. Spring
certify that I have carefully performed or reviewed the work done on the diagrammed corner as reported on this recordation form and approve the same.

James B. Spring
Signature of Surveyor

1535-S
Registration Number

DIAGRAM OF CORNER:

N.
SEE ABOVE
IN
NW¼, NW¼ SEC 25
T. 95, R. 14E
PARK COUNTY, MT.
= Corner recorded on the sheet

163992

Office of Clerk and Recorder, County of Park

This "corner record" was filed for record on the 30th day of January, 1981, was noted on the cross-index plat and is assigned page No. 56, in book No. ONE @ 12:05 pm Margaret Howell

Clerk and Recorder
Park County, Official By Kathryn M. Gray
Dep.

Form 125 - 45227

Fee 50¢
See Special Cross Index

Cross Index No. MN:1-2 T. 95 R. 14E Mer.