

INSTRUCTIONS

1. Original and/or subsequent record used to evaluate the corner position.
2. Description of evidence found, note discrepancies in the record, state method of establishing lost or obliterated corners.
3. Description of monument and accessories set to perpetuate the corner position.
4. Sketch of corner, show all pertinent data which can best be shown in a sketch example, corner marking, topography ties, position of accessories, etc.
5. Certification must be signed and sealed by Land Surveyor registered in the State of Montana.
6. Fill in Cross Index & Section Diagram at bottom of sheet.

CERTIFIED CORNER RECORDATION

Corner SW Cor. Sec. 16 T. 9 S. R. 8 E. P.M.M. Park County

1. In July 1883 U.S. Deputy Surveyor Rodney W. Page set a sandstone 16"x8"x6" about 11" in the ground for corner to sections 16, 17, 20 and 21 marked 3 notches on south and 4 on east edges and raised mound of stone along side. Pits were impractical.

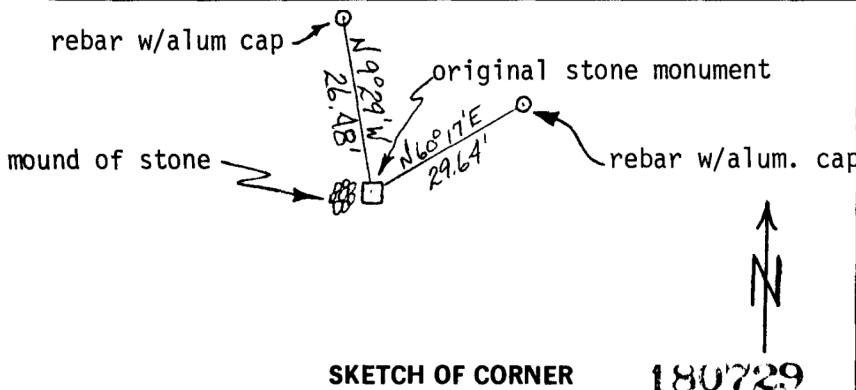
In 1916 George F. Rigby and Clarence K. Streit in a retracement survey were unable to find any evidence of the corner described by Page above so they set a granite stone 18"x12"x8" about 12" in the ground for the corner to sections 16,17,20 and 21, marked with 3 notches on south and 4 notches on east edges, and raised a mound of stone 2' base, 1½' high west of corner.

2. I found a granite stone, 12"x8", 8" above ground, firmly set, marked with 3 notches on south and 4 notches on east side. I also found a mound of stone 3' base, 1.5' high on the west side of the stone. I accepted this stone as the same stone set by Rigby and Streit in their resurvey.

3. Paint original stone orange

Set 5/8"x24" rebar with aluminum cap marked R M 1, bears N90°-29'W,26.48'

Set 5/8"x24" rebar with aluminum cap marked R M 2, bears N60°-17'E,29.64'

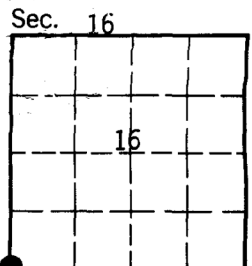


CERTIFICATION
I, Steven J. Barber
certify the information shown herein is true and correct.
Steven J. Barber
Signature Ground Party Chief
I, Michael D. Weldon
certify that this Corner Record correctly represents work performed by me or under my direction in compliance with the "Corner Recordation Act" (70-22-101, et seq., M.C.A.)
Michael D. Weldon
Signature of Surveyor & Seal
Date: 2/84 Reg. No. 7692 S
Employer: U.S. Forest Service

Office of Clerk and Recorder, County of Park. This "corner record" was filed for record on June 11, 1984 @ 12:09 P.M. was noted on the cross-index plat and is assigned page No. 67, in book No. one

No Fee

James Jennings
County Official



• - corner this sheet