

**INSTRUCTIONS**

1. Original and/or subsequent record used to evaluate the corner position.
2. Description of evidence found, note discrepancies in the record, state method of establishing lost or obliterated corners.
3. Description of monument and accessories set to perpetuate the corner position.
4. Sketch of corner, show all pertinent data which can best be shown in a sketch example, corner marking, topography ties, position of accessories, etc.
5. Certification must be signed and sealed by Land Surveyor registered in the State of Montana.
6. Fill in Cross Index & Section Diagram at bottom of sheet.

**CERTIFIED CORNER RECORDATION**

Corner W. 1/4 Cor. Sec. 16 T. 9 S. R. 8 E. P.M.M. Park County

1. In July 1883 U.S. Deputy Surveyor Rodney W. Page set a sandstone 14"x12"x4" about 9" in the ground for 1/4 section corner between sections 16 & 17, marked 1/4 on west face and raised a mound of stone along side. Pits were impractical.

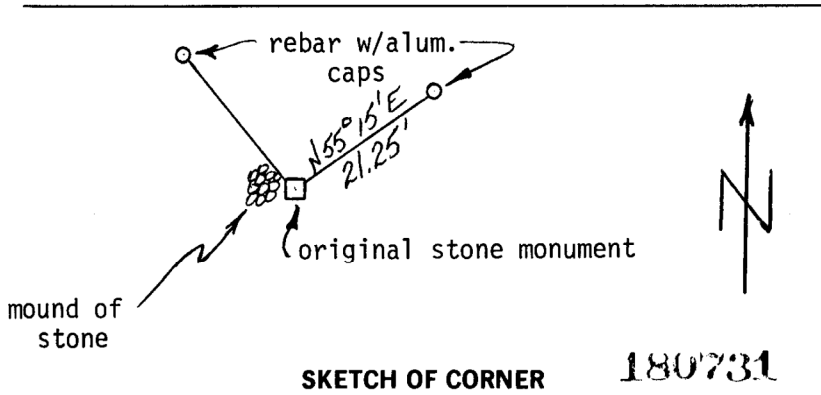
In 1916 George F. Rigby and Clarence K. Streit in a retracement of the line between sections 16 and 17 made a diligent search for the 1/4 corner set by Page. Unable to find Page's corner they set a granite stone 20"x8"x6" about 15" in the ground for the 1/4 corner between sections 16 and 17, marked 1/4 on west face and raised a mound of stone 2' base, 1 1/2' high west of corner.

2. I found a granite stone 6"x8", 10" above ground, firmly set, marked 1/4 on west face and a mound of stone 2' base on west side of corner. I accepted this stone as the one set in the 1916 resurvey.

3. Paint 1/4 corner stone orange and rebuild mound of stone to height of 2'.

Set 5/8"x24" rebar w/aluminum cap marked R M 1, bears N55°-15'E, 21.25'.

Set 5/8"x24" rebar w/aluminum cap marked R M 2, bears N39°-43'W, 25.06'.



CERTIFICATION

I, Steven J. Barber  
 certify the information shown herein is true and correct.  
*Steven J. Barber*  
 Signature Ground Party Chief

I, Michael D. Weldon  
 certify that this Corner Record correctly represents work performed by me or under my direction in compliance with the "Corner Recordation Act" (70-22-101, et seq., M.C.A.)  
*Michael D. Weldon*  
 Signature of Surveyor & Seal

Date: 2/84 Reg. No. 7692 S  
 Employer: U.S. Forest Service

Office of Clerk and Recorder, County of Park. This "corner record" was filed for record on June 11, 1984 12:11 P.M. was noted on the cross-index plat and is assigned page No. 69, in book No. one  
*James Jennings*  
 County Official  
 No Fee

