

INSTRUCTIONS

1. Original and/or subsequent record used to evaluate the corner position.
2. Description of evidence found, note discrepancies in the record, state method of establishing lost or obliterated corners.
3. Description of monument and accessories set to perpetuate the corner position.
4. Sketch of corner, show all pertinent data which can best be shown in a sketch example, corner marking, topography ties, position of accessories, etc.
5. Certification must be signed and sealed by Land Surveyor registered in the State of Montana.
6. Fill in Cross Index & Section Diagram at bottom of sheet.

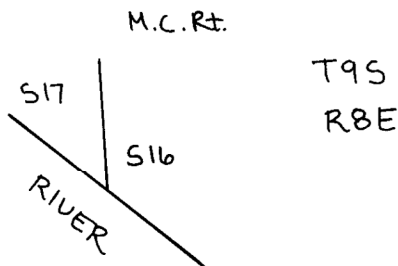
CERTIFIED CORNER RECORDATION

Corner M.C. Rt. to Frac. Secs. 16 + 17 T. 9S R. 8E P.M.M. Park County

FROM: V103, P15: "Right bank of Yellowstone River where I set a granite stone 20x14x10 ins., 15 ins. in the ground for meander corner to frac't Secs. 16 and 17 marked M.C. and raised a mound of stones 2 ft. high, 4 1/2 ft. base alongside."

FOUND: Basalt stone 8x6 ins., 4 ins. in the ground. Marked "MC" on face away from river. Cairn of large rocks 5 ft. north of stone. Stone is 5 ft. perpendicular from the river bank. I cut "X" on top of stone.

See attached sheet (portion of C/S 1040) for proximate ties.



SKETCH OF CORNER

CERTIFICATION

I, _____
 certify the information shown herein is true and correct.

Signature Ground Party Chief
 I, Henry A. Rate

certify that this Corner Record correctly represents work performed by me or under my direction in compliance with the "Corner Recordation Act" (70-22-101, et seq., M.C.A.)

Henry A. Rate
 Signature of Surveyor & Seal

Date: 2/15/96 Reg. No. 37165
 Employer: Self

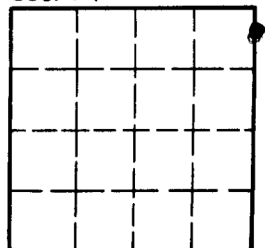
Office of Clerk and Recorder, County of Park. This "corner record" was filed for record on April 23 1996 @ 4:20 pm was noted on the cross-index plat and is assigned page No. 102, in book No. One Denise Nelson County Official

252505

Cross Index No. JK-9 T. 9S R. 8E P.M.M.

Adopted July 1, 1981, Montana Board of Professional Engineers & Land Surveyors

Sec. 17



• - corner this sheet

(moved?)
 S 56°11.0' W
 8.82

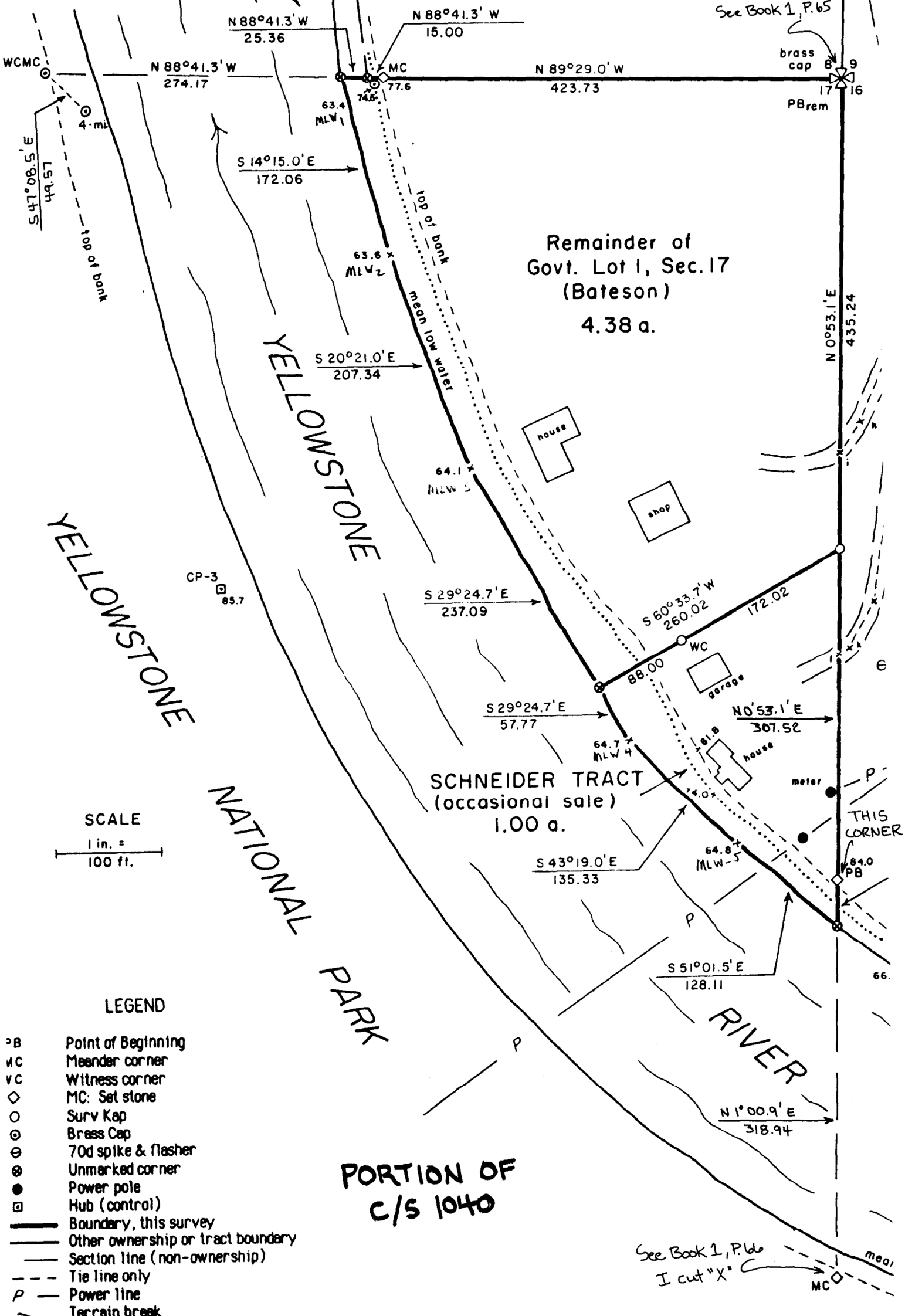
1 in. =
 20 ft.

DETAIL

Lot 4,
 Plat 523
 (Karnes)

CP-2
 100.0

See Book 1, P. 65



N 88°41.3' W
 25.36

N 88°41.3' W
 15.00

N 88°41.3' W
 274.17

N 89°29.0' W
 423.73

S 14°15.0' E
 172.06

S 20°21.0' E
 207.34

S 29°24.7' E
 237.09

S 29°24.7' E
 57.77

S 43°19.0' E
 135.33

S 51°01.5' E
 128.11

N 1°00.9' E
 318.94

N 0°53.1' E
 435.24

S 60°33.7' W
 260.02

N 0°53.1' E
 307.52

SCHNEIDER TRACT
 (occasional sale)
 1.00 a.

Remainder of
 Govt. Lot 1, Sec. 17
 (Bateson)
 4.38 a.

PORTION OF
 C/S 1040

See Book 1, P. 66
 I cut "X"

- LEGEND**
- ⊢ B Point of Beginning
 - MC Meander corner
 - VC Witness corner
 - ◇ MC: Set stone
 - Surv Kap
 - ⊙ Brass Cap
 - ⊕ 70d spike & flasher
 - ⊖ Unmarked corner
 - Power pole
 - ⊠ Hub (control)
 - Boundary, this survey
 - Other ownership or tract boundary
 - Section line (non-ownership)
 - - - Tie line only
 - P Power line
 - ~ Terrain break