

INSTRUCTIONS

1. Original and/or subsequent record used to evaluate the corner position.
2. Description of evidence found, note discrepancies in the record, state method of establishing lost or obliterated corners.
3. Description of monument and accessories set to perpetuate the corner position.
4. Sketch of corner, show all pertinent data which can best be shown in a sketch example, corner marking, topography ties, position of accessories, etc.
5. Certification must be signed and sealed by Land Surveyor registered in the State of Montana.
6. Fill in Cross Index & Section Diagram at bottom of sheet.

CERTIFIED CORNER RECORDATION

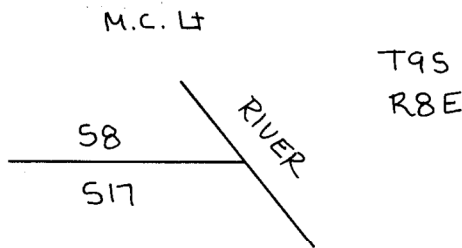
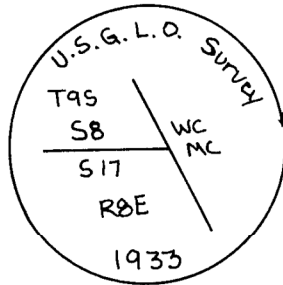
Corner M.C. Lt. to Frac. Secs. 8+17 T. 9S R. 8E P.M.M. Park County

FROM: V103, P20: "Left bank of Yellowstone River. Set a granite stone 14x12x10 ins., 9 ins. in the ground for meander corner to frac't Secs. 8 and 17 marked M.C. and raised a mound of stones 2 ft. high, 4 1/2 ft. base alongside."

FOUND: Brass Cap on 1 in. pipe, 6 ins. up. Set in 1933 by W. R. Bandy who did not find original stone. Brass Cap is on lip of river bank in small cairn.

See attached sheet (portion of C/S 1040) for proximate ties.

Brass Cap marked:



SKETCH OF CORNER

CERTIFICATION

I, _____
certify the information shown herein is true and correct.

Signature Ground Party Chief

I, Henry A. Rate

certify that this Corner Record correctly represents work performed by me or under my direction in compliance with the "Corner Recordation Act" (70-22-101, et seq., M.C.A.)

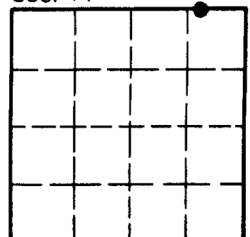
Henry A. Rate
Signature of Surveyor & Seal

Date: 2/15/96 Reg. No. 37165

Employer: Self

Office of Clerk and Recorder, County of Park. This "corner record" was filed for record on April 23 1996 @ 4:21 pm was noted on the cross-index plat and is assigned page No. 103, in book No. One Denise Nelson
County Official

Sec. 17



• - corner this sheet

252506

Cross Index No. 58 T. 9S R. 8E P.M.M.

Adopted July 1, 1981, Montana Board of Professional Engineers & Land Surveyors

(moved?)
 $S 56^{\circ}11.0' W$
 8.82

1 in. =
 20 ft.

DETAIL

Lot 4,
 Plat 523
 (Karnes)

CP-2
 100.0

See Book 1, P. 65

THIS CORNER

WCMC

$N 88^{\circ}41.3' W$
 25.36

$N 88^{\circ}41.3' W$
 15.00

$N 88^{\circ}41.3' W$
 274.17

$N 89^{\circ}29.0' W$
 423.73

brass cap

PBrem

$S 47^{\circ}08.5' E$
 49.57

top of bank

$S 14^{\circ}15.0' E$
 172.06

top of bank
 mean low water

Remainder of
 Govt. Lot 1, Sec. 17
 (Bateson)
 4.38 a.

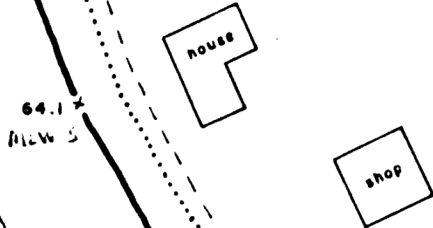
$N 0^{\circ}53.1' E$
 435.24

$S 20^{\circ}21.0' E$
 207.34

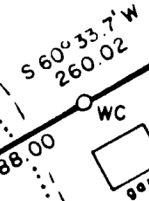
YELLOWSTONE

NATIONAL PARK

CP-3
 85.7



$S 29^{\circ}24.7' E$
 237.09



$S 29^{\circ}24.7' E$
 57.77

$N 0^{\circ}53.1' E$
 307.52

SCHNEIDER TRACT
 (occasional sale)
 1.00 a.

meter

$S 43^{\circ}19.0' E$
 135.33

$S 51^{\circ}01.5' E$
 128.11

RIVER

$N 1^{\circ}00.9' E$
 318.94

PORTION OF
 C/S 1040

See Book 1, P. 66
 I cut "X"

MC

SCALE
 1 in. =
 100 ft.

LEGEND

- B Point of Beginning
- C Meander corner
- C Witness corner
- > MC: Set stone
- Surv Kap
- ⊙ Brass Cap
- ⊙ 70d spike & flasher
- ⊙ Unmarked corner
- Power pole
- Hub (control)
- Boundary, this survey
- Other ownership or tract boundary
- Section line (non-ownership)
- - - Tie line only
- Power line
- - - Terrain break