

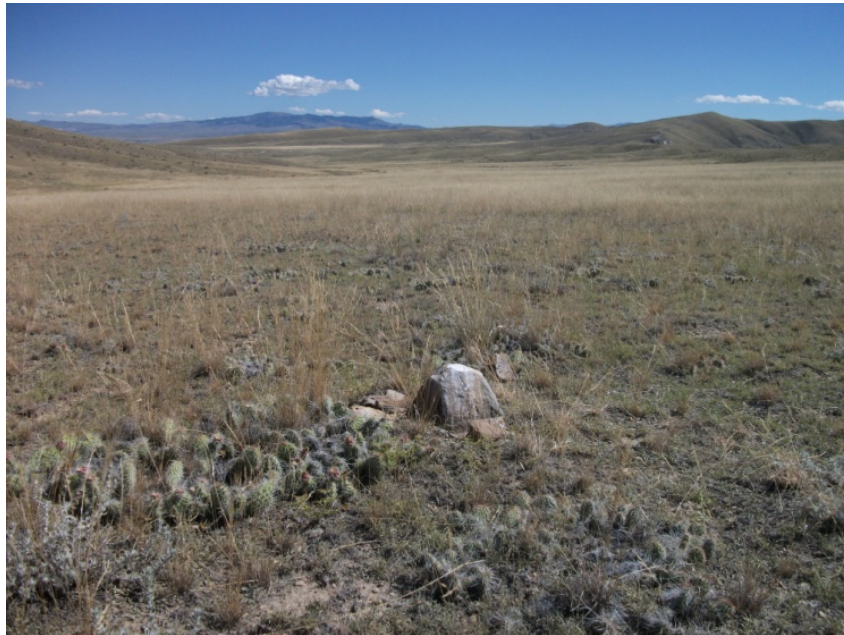
PLSS Corner Collection System Data Sheet

Meridian: MT20 Tier: 6S Range: 9W Section(s): 20/21 County: Beaverhead

GCDB Point ID: MT200060S0090W0300340

Employee Name: Scott R. Slotsve Date: 8/15/2010 Time: 3:15 pm

Found: Stone firmly set and properly marked, 14" x 7" x 8", above ground with small stone collar.



Latitude: 45°17'52.1550" N

Longitude: 112°43'25.1258" W

Datum: NAD83(2007)

Approximate orthometric elevation: 5447 ft.

This corner was located as part of a PLSS enhancement project. The location of this corner was not used as control for any legal surveys during this exercise. Horizontal accuracy 1 meter or less.