

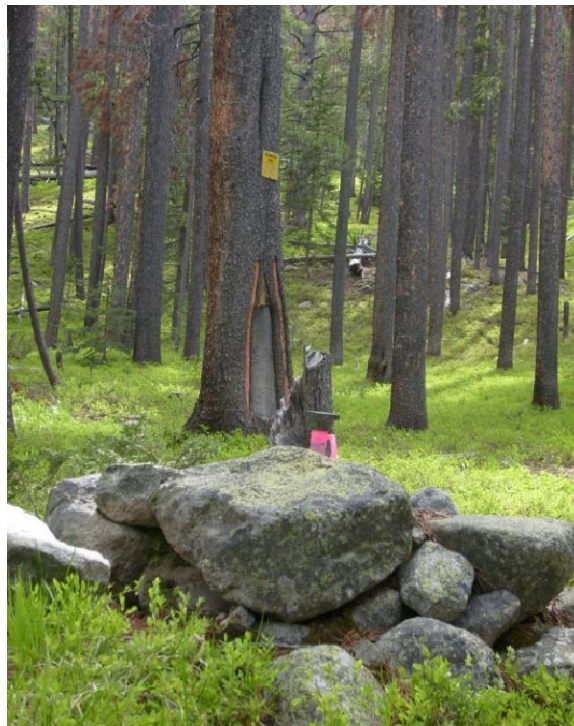
## PLSS Corner Collection System Data Sheet

Meridian: MT20 Tier: 7N Range: 5W Section(s): 29 County: Jefferson

GCDB Point ID: MT200070N0050W0300240

Employee Name: Jeffrey Roe Date: 6/24/2010 Time: 16:30

Found: 2 1/2" brass cap on 1" iron pipe set 13" above ground in center of earth and stone mound.



Latitude: 46°19'50.3289" N Longitude: 112°14'41.7753" W Datum: NAD83(2007)

Approximate orthometric elevation: 6768 ft.

This corner was located as part of a PLSS enhancement project. The location of this corner was not used as control for any legal surveys during this exercise. Horizontal accuracy 1 meter or less.