

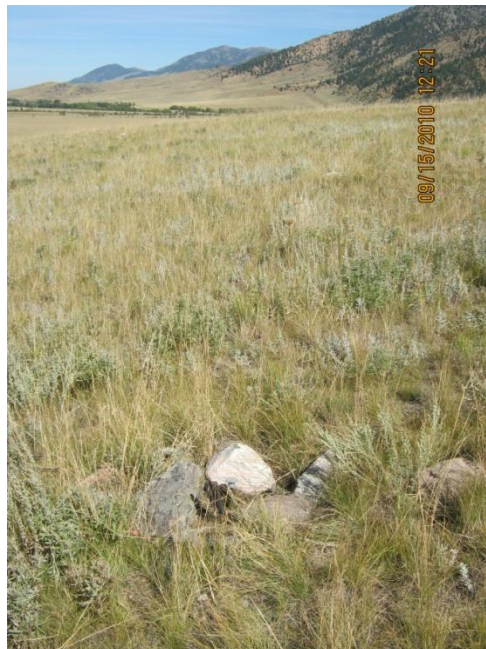
PLSS Corner Collection System Data Sheet

Meridian: PMM Tier: T8S Range: R1E Section(s): S34 | S35 County: Madison
S3 | S2
T9S

GCDB Point ID: MT200080S0010E0 500100

Employee Name: Dan Boers Date: 09/15/2010 Time: 11:25 - 12:50

Found: A rebar, 5/8 in diameter extending 5 inches AG with an AC, 2 inches. Found a granite stone, 13x9x7 inches lying loose along south east side of rebar. Found 4 chiseled grooves on 1 face. Found a collar of stone 3 feet in diameter around rebar. This corner is on a moderate west facing slope. Left corner as found.



Latitude: 45°05'11.8156"N Longitude: 111°34'34.2787"W Datum NAD83(2007)

Approximate orthometric elevation: 6188.000 ft.

This corner was located as part of a PLSS enhancement project. The location of this corner was not used as control for any legal surveys during this exercise. Horizontal accuracy 1 meter or less.