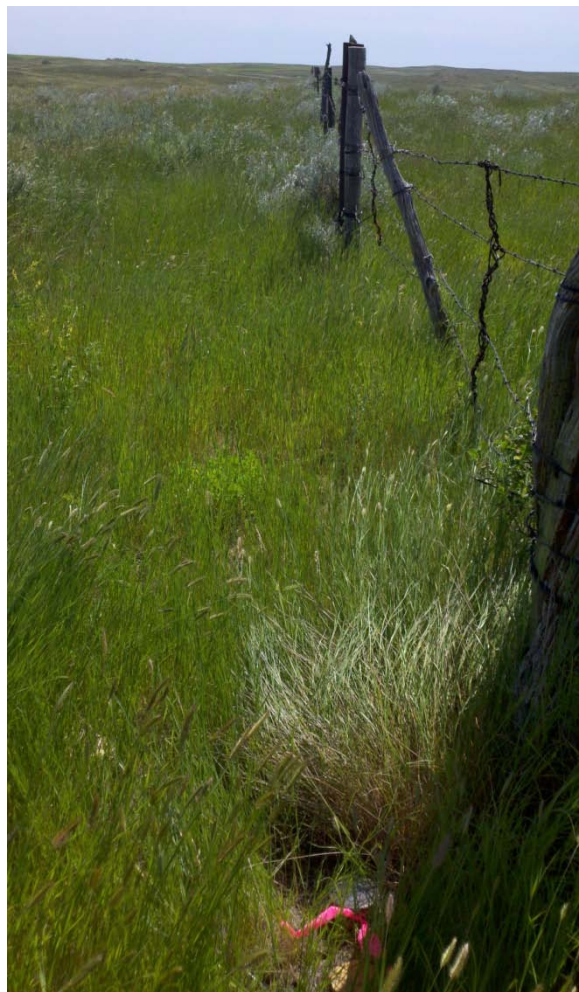


PLSS Corner Collection System Data Sheet

Meridian: PMMTier: 11NRange: 51ESection(s): 36County: PrairieGCDB Point ID: **MT200110N0510E0700100**Employee Name: Ryan DeeDate: 6/30/2011Time: 10:15

Found: Iron post 3" in diameter, 1" above ground, with a 3 1/2" diameter BLM brass cap. Monument is situated 6" Northwest of an old fence corner post (16" diameter) with fences extending East and South. Monument is located on level ground.



Latitude: 46°39'26.8958" N

Longitude: 105°14'19.8871" W

Datum: NAD83(2007)

Approximate orthometric elevation: 2752 ft.

This corner was located as part of a PLSS enhancement project. The location of this corner was not used as control for any legal surveys during this exercise. Horizontal accuracy 1 meter or less.