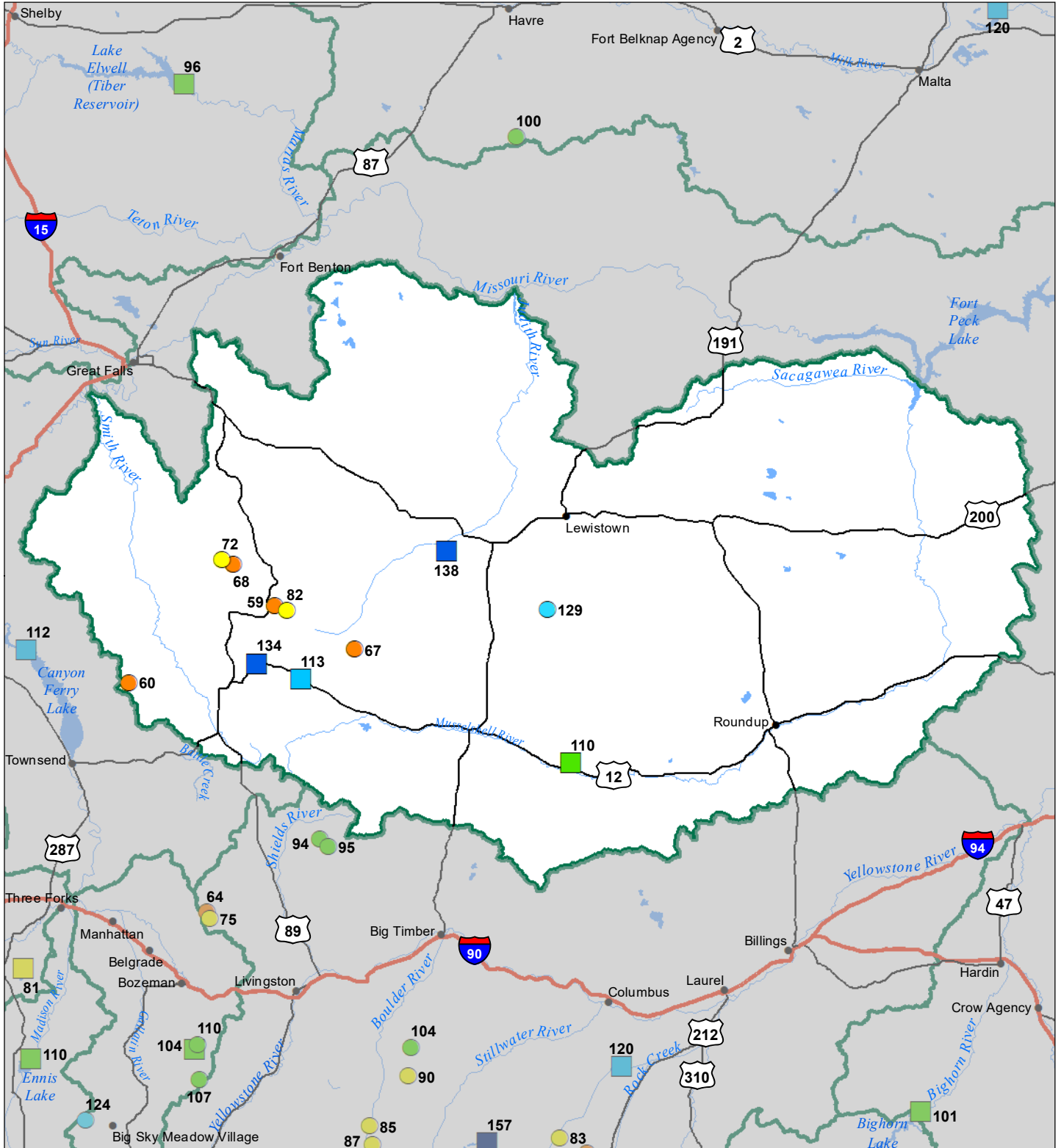


# Smith-Judith-Musselshell River Basin Monthly Precipitation and Reservoir Levels Percentage of Normal May 1, 2024 (April 1, 2023 - May 1, 2024)



### Precipitation Percent of Normal

#### SNOTEL

- > 150%
- 131 - 150%
- 111 - 130%
- 91 - 110%
- 71 - 90%
- 51 - 70%
- 1 - 50%

#### COOP/ACIS

- > 150%
- 131 - 150%
- 111 - 130%
- 91 - 110%
- 71 - 90%
- 51 - 70%
- 1 - 50%

### Reservoirs Percent of Normal

- > 150%
- 131 - 150%
- 111 - 130%
- 91 - 110%
- 71 - 90%
- 51 - 70%
- 1 - 50%

