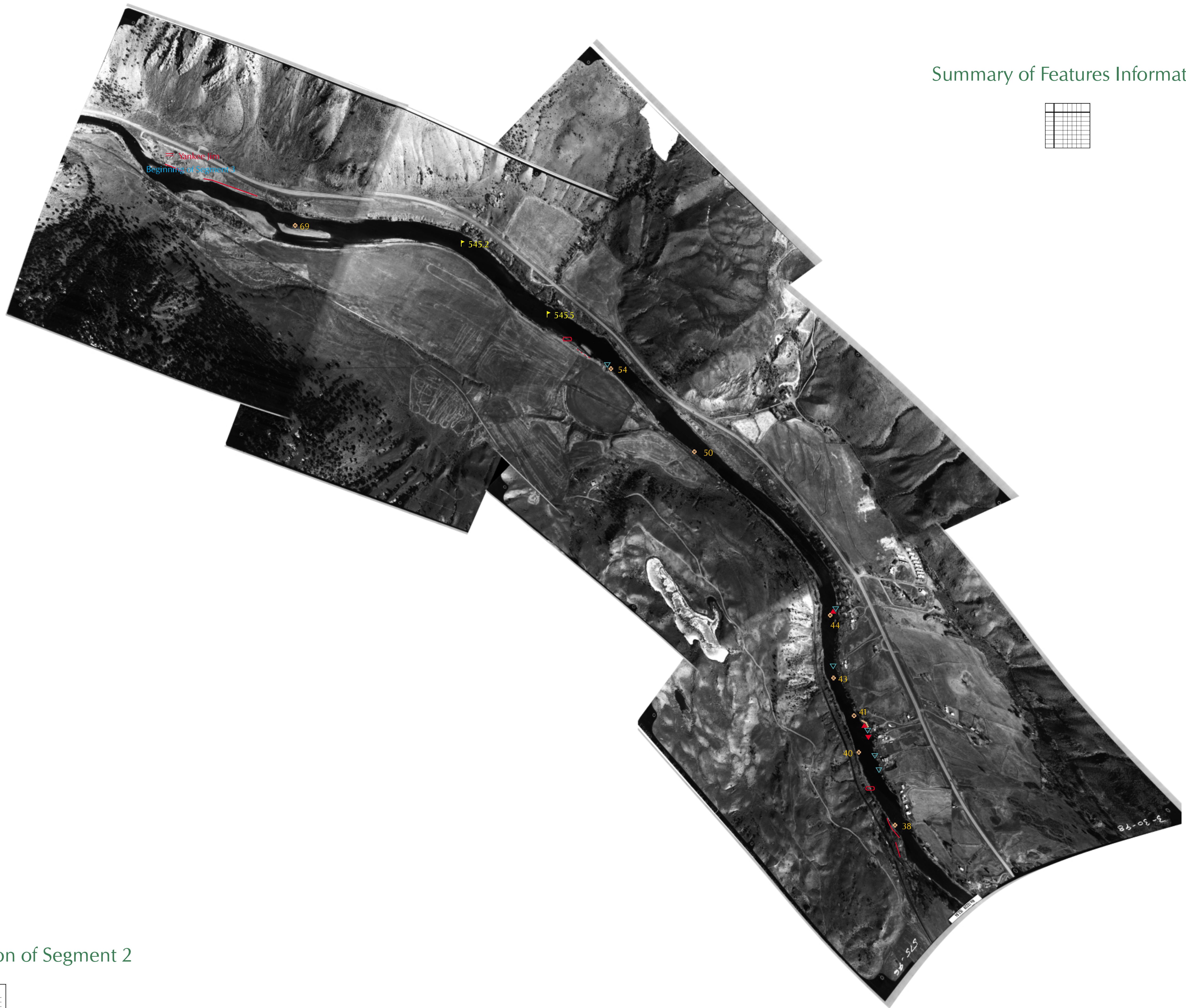
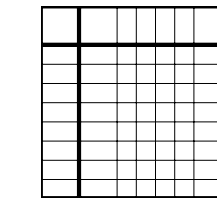


# YELLOWSTONE RIVER PHYSICAL FEATURES INVENTORY

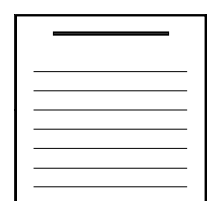
## River Segment 2 Lower



Summary of Features Information for Segment 2

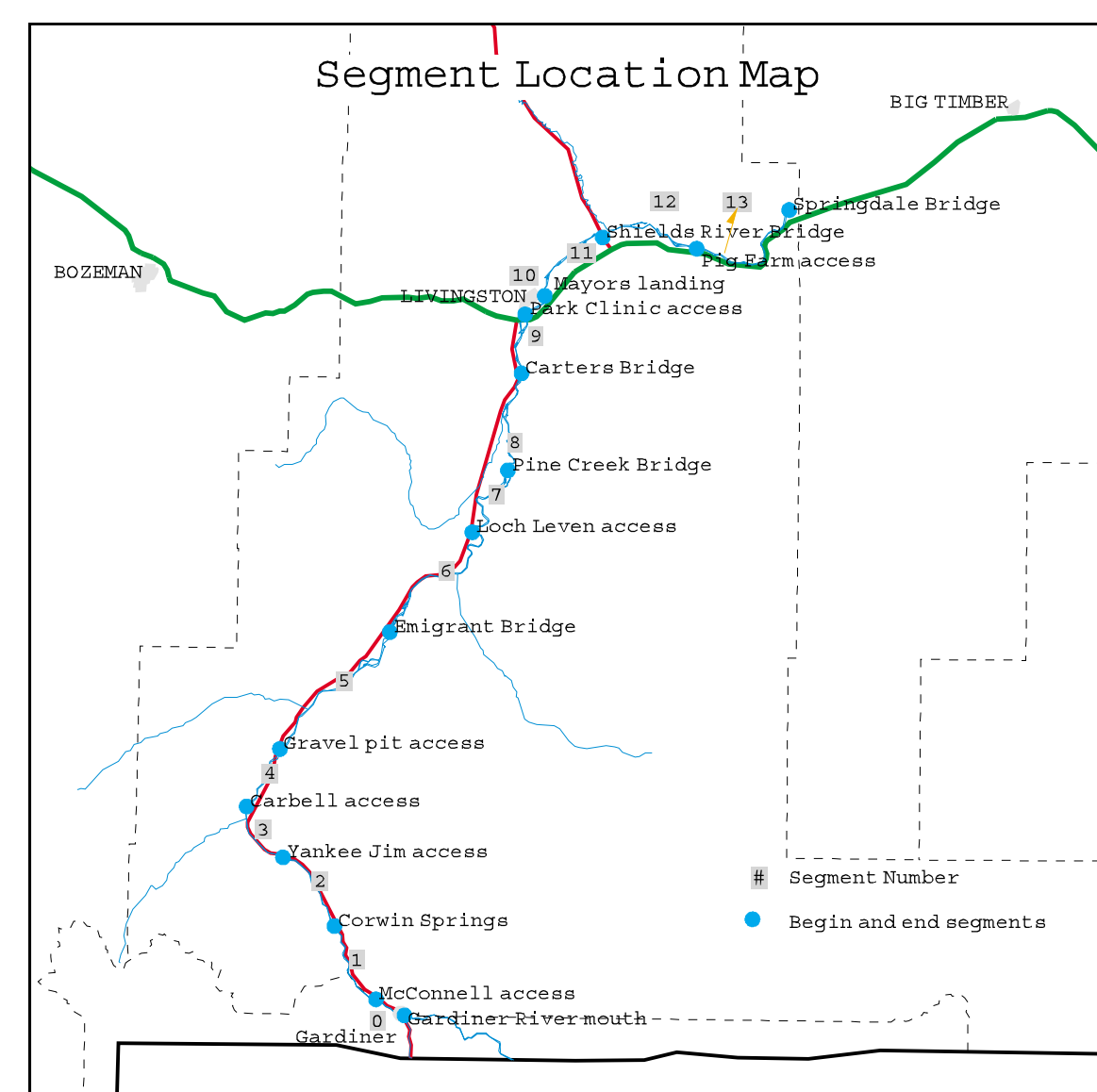
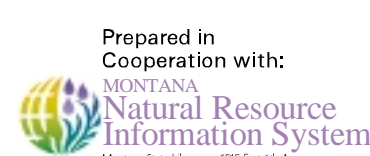


Description of Segment 2



The Natural Resource Conservation Service (NRCS) in Montana is a Federal agency working in partnership with the American people to help protect and sustain natural resources on America's private lands.

This information was prepared for the Upper Yellowstone River Task Force and the Park County Conservation District by U.S.D.A. Natural Resources Conservation Service and Montana Department of Environmental Quality in association with other partners.



Physical features shown here are based on an inventory of the Upper Yellowstone River conducted April 22 and 23, 1998.

**SYMBOL LEGEND**

- | LINE FEATURES     | POINT FEATURES         |
|-------------------|------------------------|
| Bank Mass Wasting | Public River Access    |
| Bank Rock Riprap  | Car Body               |
| Eroding Bank      | Irrigation Pump        |
|                   | Photopoint             |
|                   | Rock Barb              |
|                   | Rock Jetty             |
|                   | DNRC River Mile Marker |

