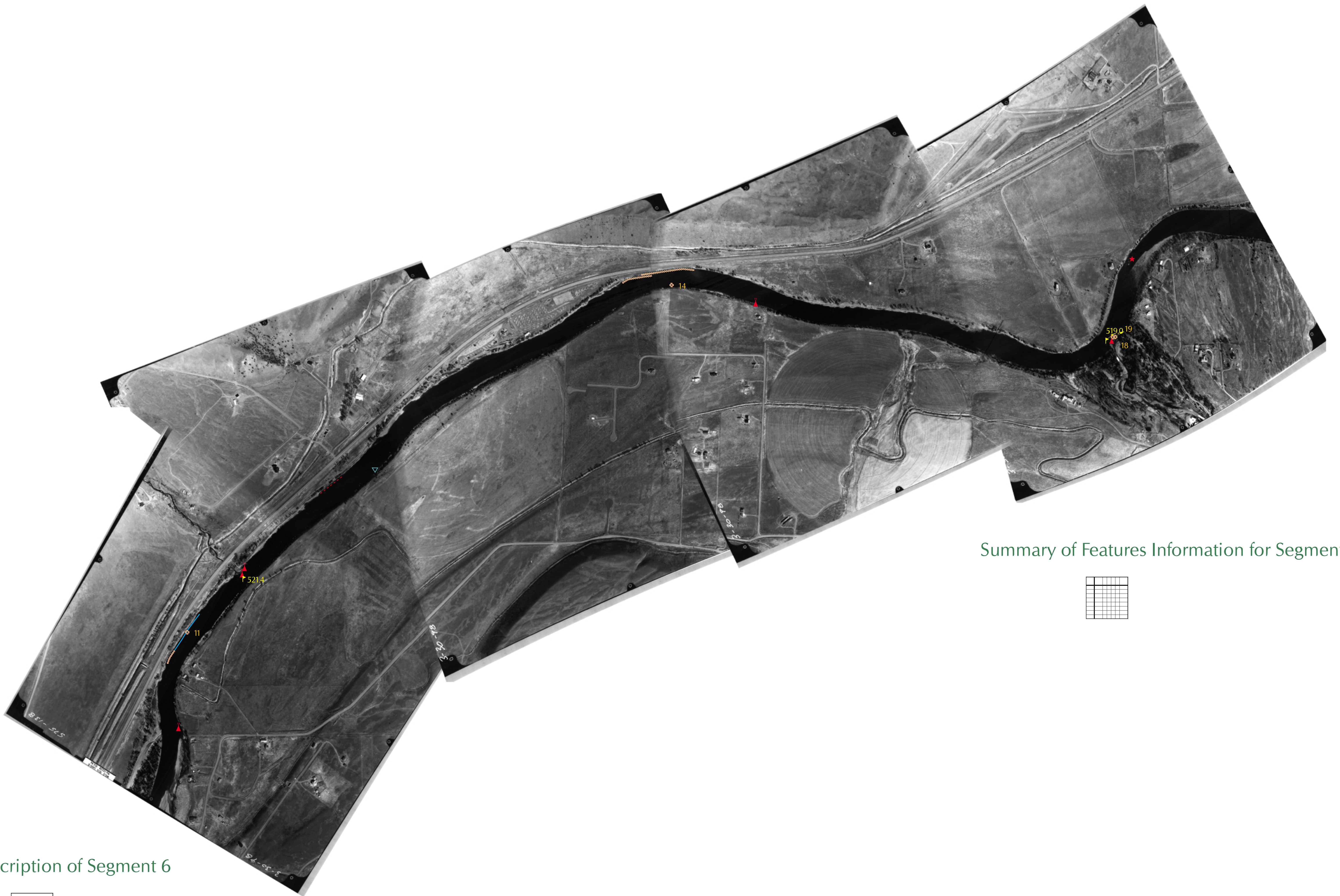
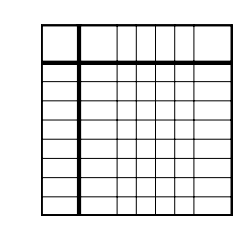


YELLOWSTONE RIVER PHYSICAL FEATURES INVENTORY

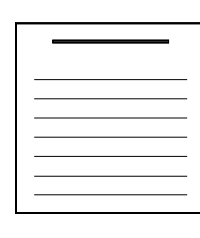
River Segment 6 Middle



Summary of Features Information for Segment 6

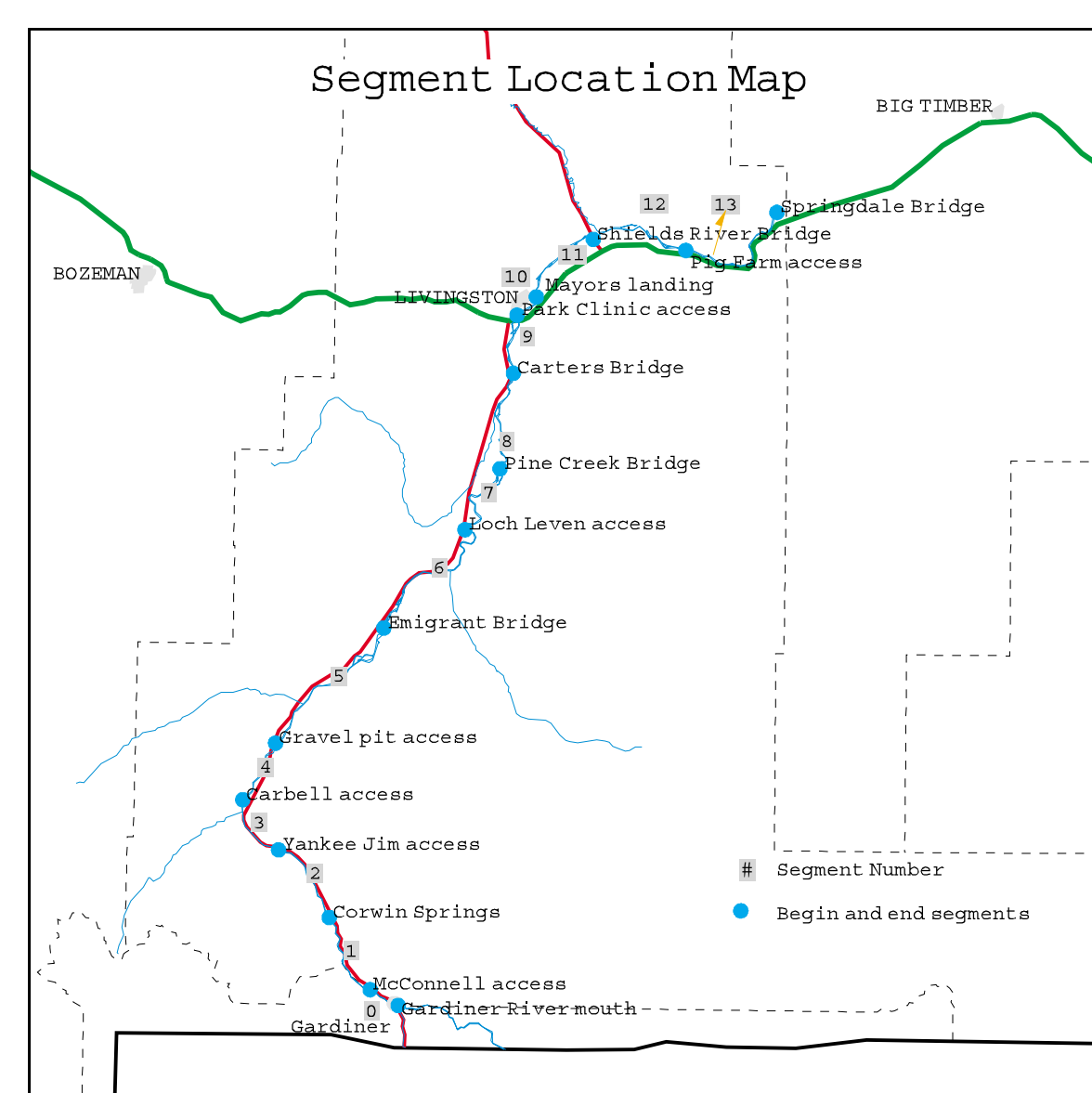
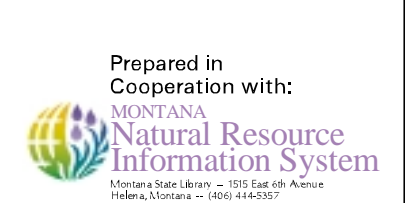


Description of Segment 6



The Natural Resource Conservation Service (NRCS) in Montana is a Federal agency working in partnership with the American people to help protect and sustain natural resources on America's private lands.

This information was prepared for the Upper Yellowstone River Task Force and the Park County Conservation District by U.S.D.A. Natural Resources Conservation Service and Montana Department of Environmental Quality in association with other partners.



Physical features shown here are based on an inventory of the Upper Yellowstone River conducted April 22 and 23, 1998.

SYMBOL LEGEND

LINE FEATURES	POINT FEATURES
Bank Rock Riprap	Irrigation Pump
Eroding Bank	Information Site Number
Concrete Wall	Photopoint
	Active Bridge
	Boat Ramp
	Rock Barb
	DNRC River Mile Marker
	Water Quality Station

Scale in Feet: 0 1000 2000