
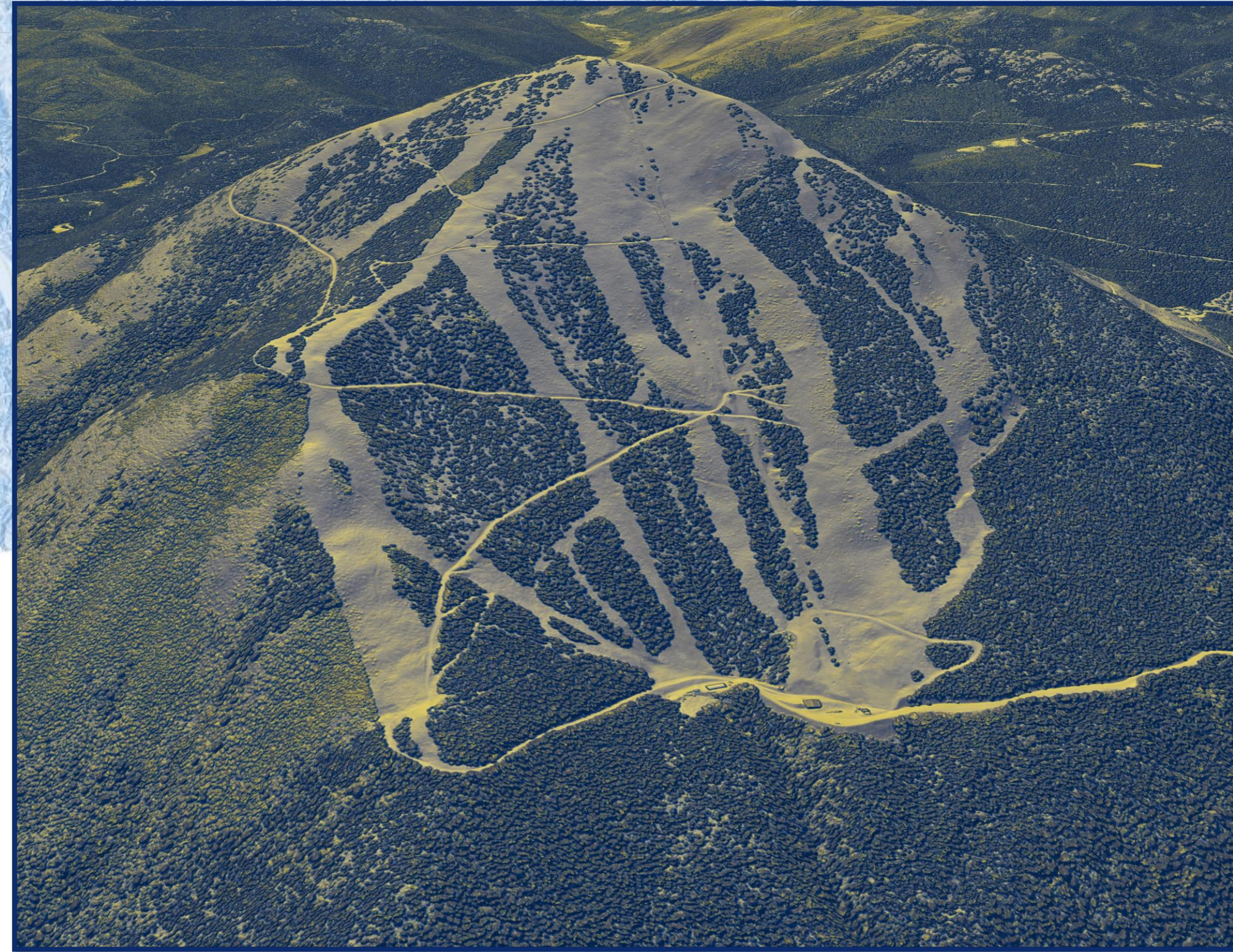


# Montana Spatial Data Infrastructure (MSDI): Elevation

 **Turner Mountain**  
Turner Mountain  
1814.85 meters

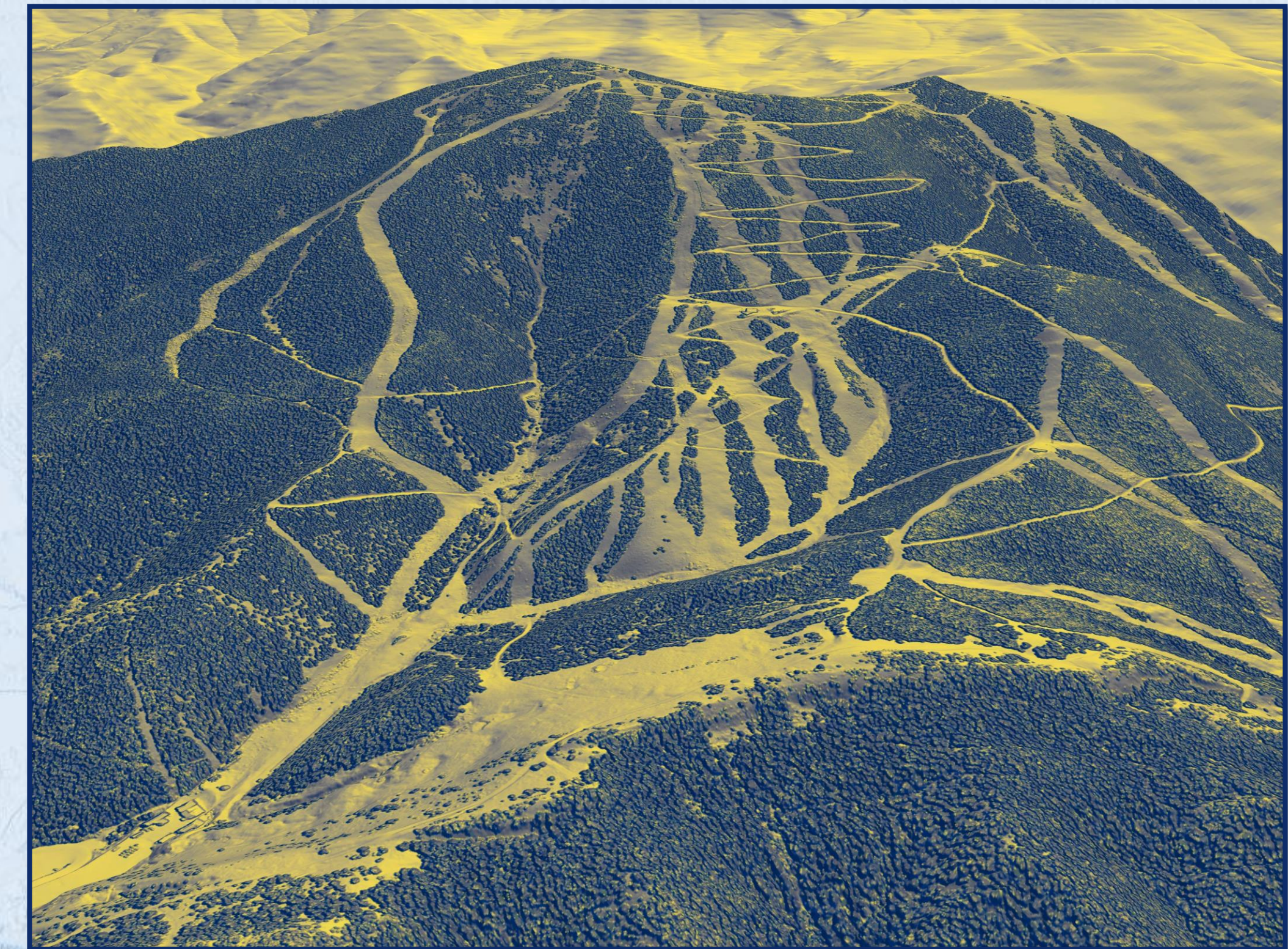


## *Ski Montana*

## *with Lidar*



 **Discovery**  
Rumsey Mountain  
2485.43 meters



 **Red Lodge**  
Grizzly Peak  
2867.04 meters

Lidar is currently being collected throughout Montana as part of the USGS 3D Elevation Program (3DEP):  
<https://www.usgs.gov/3d-elevation-program>

The Lidar Collection is within the Montana Spatial Data Infrastructure (MSDI):  
Elevation Theme  
<https://msl.mt.gov/GIS/Elevation>

Learn more and view the Montana Lidar Inventory here:  
<https://msl.mt.gov/GIS/LidarInventory>

#### Data Sources:

- Turner Mountain: Montana 2019 LiDAR- Lincoln QL1; Montana Dept of Natural Resources and Conservation
- Discovery: Phase 1: Ravalli, Granite, Custer, Powder River 2019; USGS 3DEP with Montana Partners
- Red Lodge: Montana 2019 LiDAR - Carbon/Stillwater QL 1; Montana Dept of Natural Resources and Conservation
- Background: 2.5 meter resolution Terrain: Multi-Directional Hillshade; Esri's Living Atlas

Projection: NAD83 (2011) State Plane Montana FIPS 2500 (meters) | WKID: 6514  
Software: 3D Scenes were created using 1-meter resolution Digital Surface Model Mosaics and exported using ArcGIS Pro software