

Click to draw point or area of interest

Hyperlinks to NRDP, MSL, Map Book, and help documents

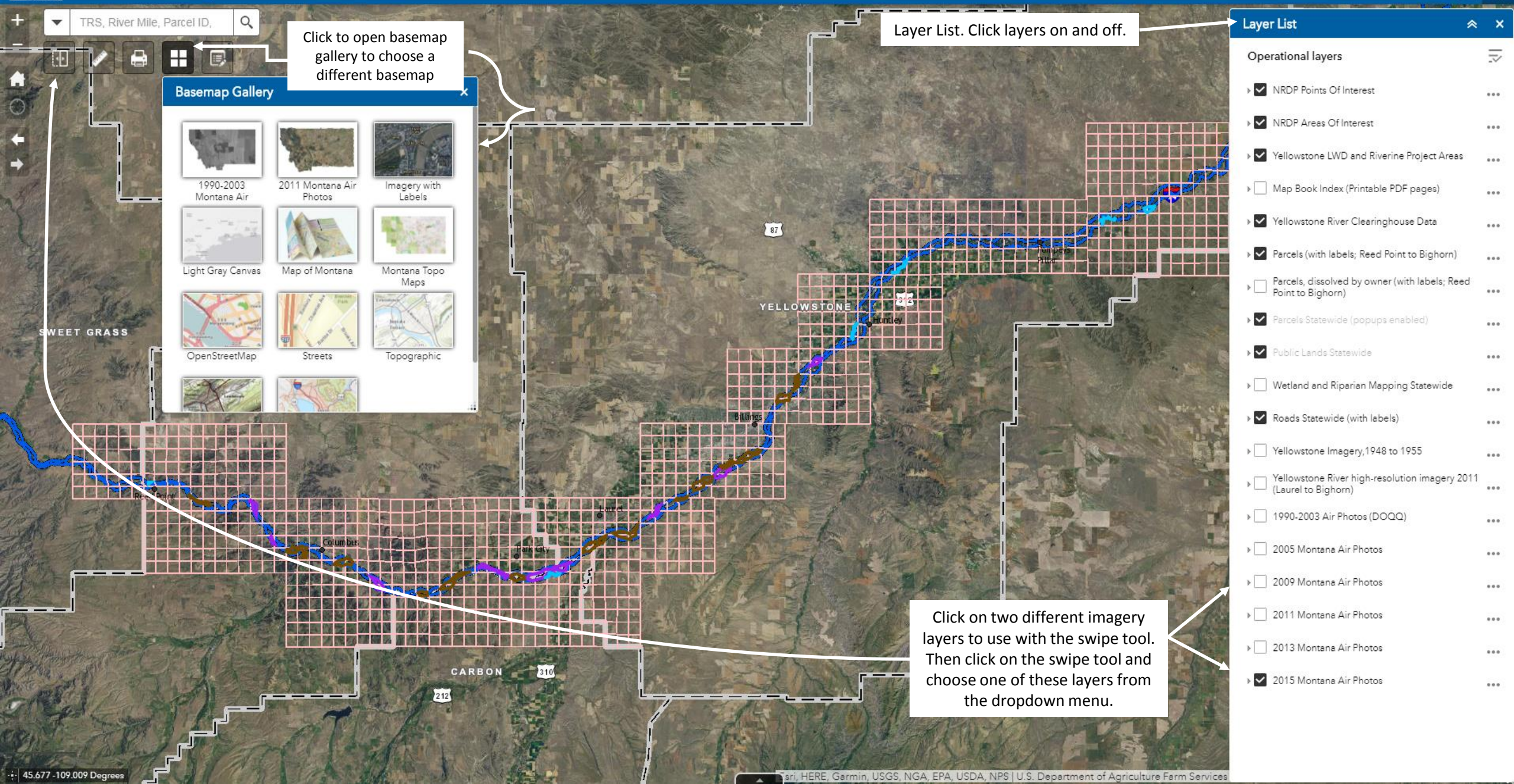
Legend and Layers

Search by township, range, and section, river mile, parcel ID, address, lat/long coordinates, project area, or area of interest

Type in search box and then select from options. Do not press *Enter* or the search icon.

Lat/long coordinates. Click cross icon to set coordinates in one position.

- TRRS, River Mile, Parcel ID,
- All
- Parcels owner
- Parcels address
- Montana Geocoding Service
- Township, Range, Section
- Map Book Index
- River Miles, 2001
- NRDF LWD and Riverine
- Project Areas
- NRDP Points Of Interest
- NRDP Areas Of Interest



TRS, River Mile, Parcel ID,

Click to open basemap gallery to choose a different basemap

Layer List. Click layers on and off.

Basemap Gallery

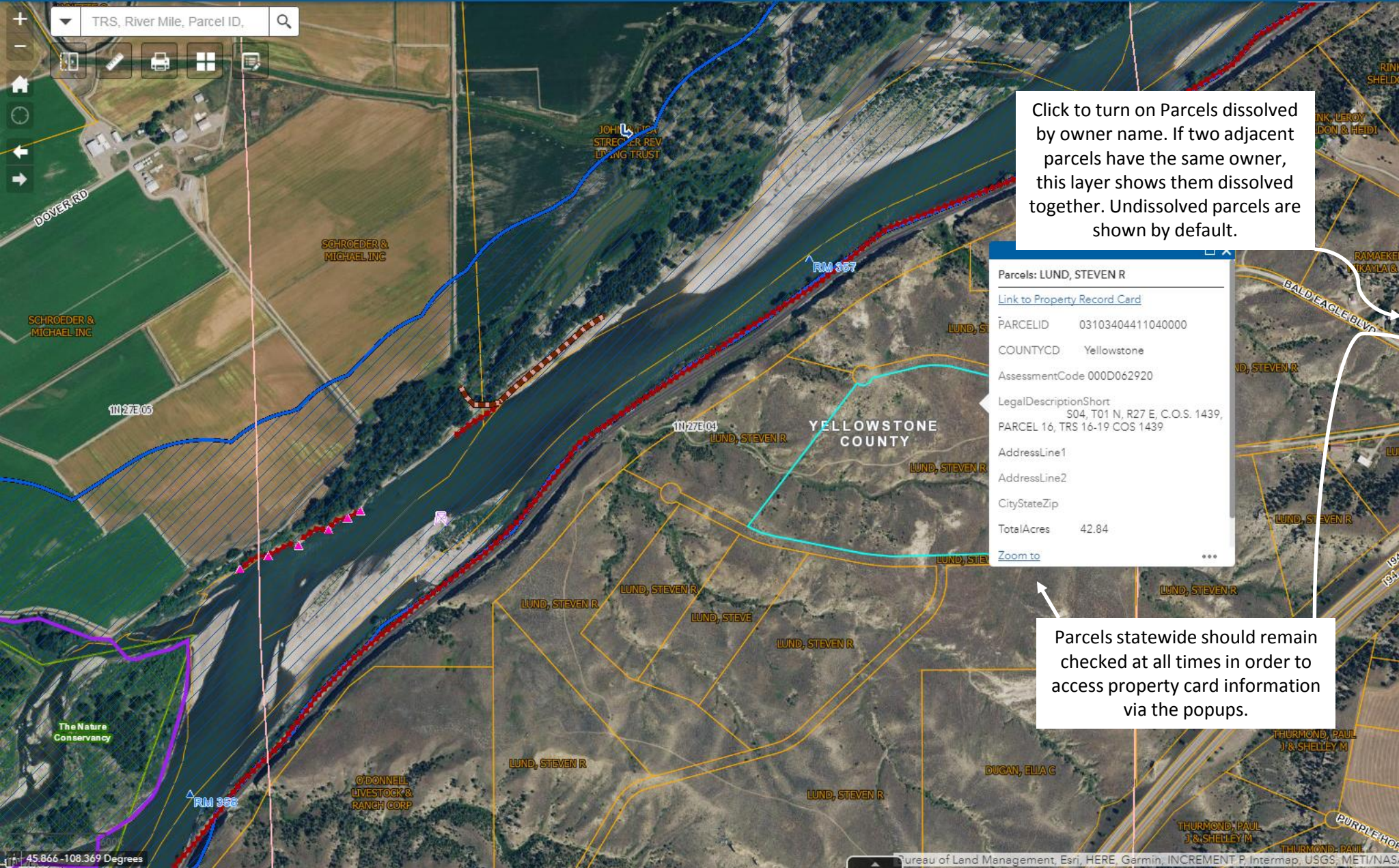
1990-2003 Montana Air	2011 Montana Air Photos	Imagery with Labels
Light Gray Canvas	Map of Montana	Montana Topo Maps
OpenStreetMap	Streets	Topographic

Layer List

Operational layers

- NRDP Points Of Interest
- NRDP Areas Of Interest
- Yellowstone LWD and Riverine Project Areas
- Map Book Index (Printable PDF pages)
- Yellowstone River Clearinghouse Data
- Parcels (with labels; Reed Point to Bighorn)
- Parcels, dissolved by owner (with labels; Reed Point to Bighorn)
- Parcels Statewide (popups enabled)
- Public Lands Statewide
- Wetland and Riparian Mapping Statewide
- Roads Statewide (with labels)
- Yellowstone Imagery, 1948 to 1955
- Yellowstone River high-resolution imagery 2011 (Laurel to Bighorn)
- 1990-2003 Air Photos (DOQQ)
- 2005 Montana Air Photos
- 2009 Montana Air Photos
- 2011 Montana Air Photos
- 2013 Montana Air Photos
- 2015 Montana Air Photos

Click on two different imagery layers to use with the swipe tool. Then click on the swipe tool and choose one of these layers from the dropdown menu.



Click to turn on Parcels dissolved by owner name. If two adjacent parcels have the same owner, this layer shows them dissolved together. Undissolved parcels are shown by default.

Parcels: LUND, STEVEN R

[Link to Property Record Card](#)

PARCELID 03103404411040000

COUNTYCD Yellowstone

AssessmentCode 000D062920

LegalDescriptionShort 504, T01 N, R27 E, C.O.S. 1439, PARCEL 16, TRS 16-19 COS 1439

AddressLine1

AddressLine2

CityStateZip

TotalAcres 42.84

[Zoom to](#)

Parcels statewide should remain checked at all times in order to access property card information via the popups.

Layer List

Operational layers

- NRDP Points Of Interest
- NRDP Areas Of Interest
- Yellowstone LWD and Riverine Project Areas
- Map Book Index (Printable PDF pages)
- Yellowstone River Clearinghouse Data
- Parcels (with labels; Reed Point to Bighorn)
- Parcels, dissolved by owner (with labels; Reed Point to Bighorn)
- Parcels Statewide (popups enabled)
- Public Lands Statewide
- Wetland and Riparian Mapping Statewide
- Roads Statewide (with labels)
- Yellowstone Imagery, 1948 to 1955
- Yellowstone River high-resolution imagery 2011 (Laurel to Bighorn)
- 1990-2003 Air Photos (DOQQ)
- 2005 Montana Air Photos
- 2009 Montana Air Photos
- 2011 Montana Air Photos
- 2013 Montana Air Photos
- 2015 Montana Air Photos

Interactive Map **Map Book**

Click on a Map Book page to download a detailed (1:8,000 scale) printable PDF.

Click on the Map Book tab to access the Map Book Index.

Map Book Index: Page 7

[Download PDF of page 7](#)

[Map Book Help](#)

Navigate to a location on the river and click on a page number to download an individual Map Book page and find the Map Book instructions.

