

4N 32E 26

4N 32E 23

4N 32E 24

4N 32E 13

107°42'30"W

107°42'15"W

107°42'0"W

107°41'45"W

107°41'30"W

107°41'15"W

107°42'30"W

46°4'30"N

107°42'15"W

46°4'15"N

107°42'0"W

46°4'15"N

46°4'15"N

4N 32E 25

107°41'30"W

107°41'15"W

46°6'0"N

107°41'0"W

4N 32E 13

107°40'45"W

46°5'45"N

107°40'30"W

46°5'15"N

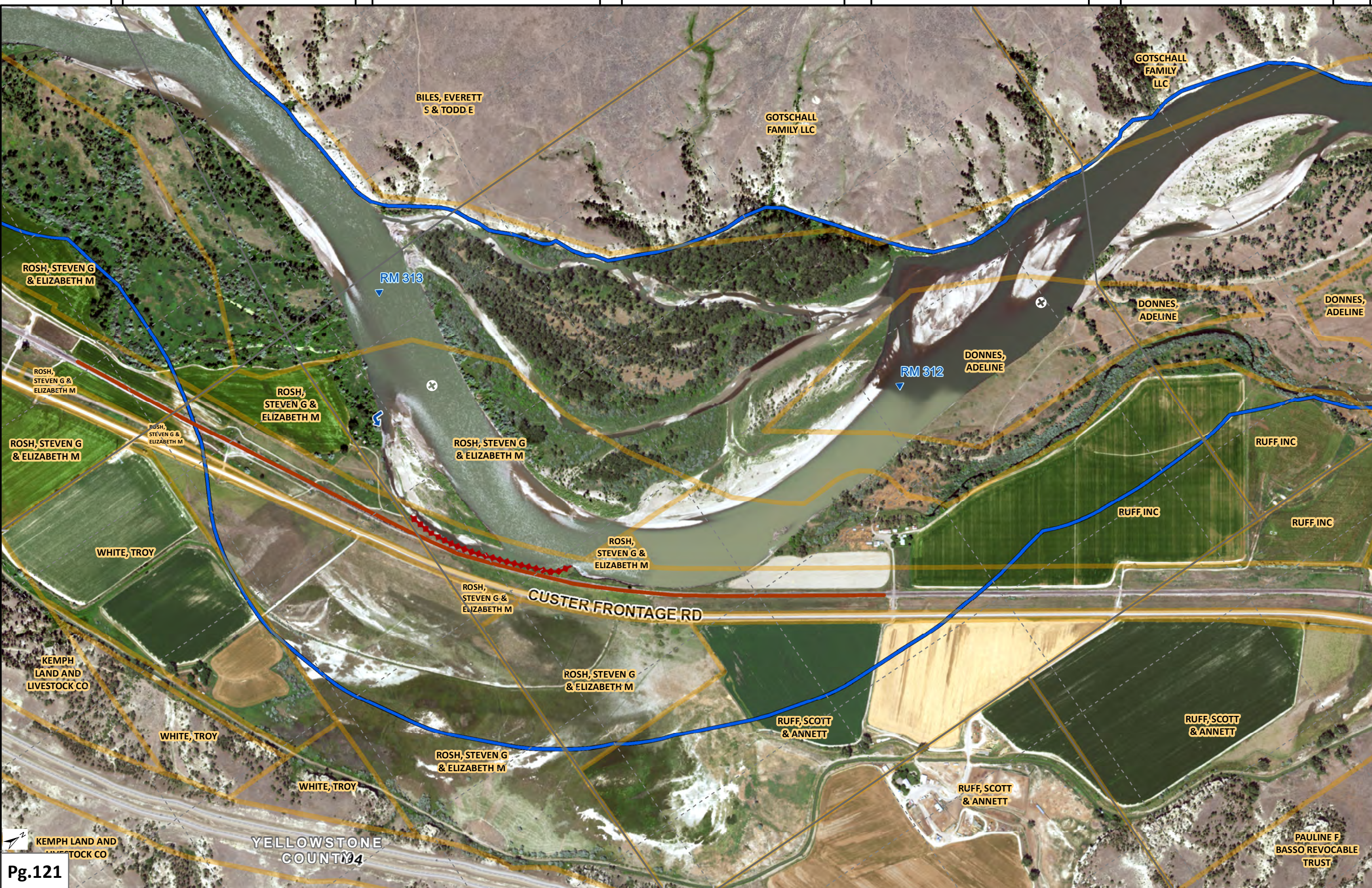
107°40'15"W

4N 33E 18

107°40'0"W

46°5'30"N

107°40'0"W



CUSTER FRONTAGE RD

RM 313

RM 312

ROSH, STEVEN G & ELIZABETH M

BILES, EVERETT S & TODD E

GOTSCHALL FAMILY LLC

GOTSCHALL FAMILY LLC

ROSH, STEVEN G & ELIZABETH M

ROSH, STEVEN G & ELIZABETH M

ROSH, STEVEN G & ELIZABETH M

ROSH, STEVEN G & ELIZABETH M

ROSH, STEVEN G & ELIZABETH M

DONNES, ADELINE

DONNES, ADELINE

DONNES, ADELINE

WHITE, TROY

ROSH, STEVEN G & ELIZABETH M

ROSH, STEVEN G & ELIZABETH M

RUFF INC

RUFF INC

RUFF, INC

KEMPH LAND AND LIVESTOCK CO

WHITE, TROY

WHITE, TROY

ROSH, STEVEN G & ELIZABETH M

RUFF, SCOTT & ANNETT

RUFF, SCOTT & ANNETT

RUFF, SCOTT & ANNETT