

County	Sweet Grass	Upstream River Mile	463
Classification	UB: Unconfined braided	Downstream River Mile	459.7
General Location	Big Timber	Length	3.30 mi (5.31 km)
General Comments	To Boulder River confluence; encroachment at Big Timber; extensive armor		

Narrative Summary

Reach A4 is approximately 3.3 miles long, extending from near the Sweet Grass County Fairgrounds downstream to the Boulder River confluence. Reach A4 is very dynamic with active channel migration, threats to infrastructure, bank armor, flanked barbs, and active riparian recruitment on raw gravel bars. The most dynamic portion of the reach is upstream of the Highway 191 Bridge; in spring of 2013 a large meander formed a 1,500 foot long chute cutoff near the fairgrounds which abandoned about 3,500 feet of channel to the south.

About 19 percent of the banks in Reach A4 are armored, with the majority of that armor being rock riprap. Between 2001 and 2011, there was a loss of about 1,000 feet of armor in the reach. Over 800 feet of that lost bank protection was flow deflectors; flanked barbs are visible in the middle of the channel downstream of the fairgrounds. With the avulsion of 2013, those flanked barbs are now sitting in the abandoned channel. Similar to reaches upstream, the river channel in Reach A4 has increased in size since 1950 by about 19 acres, and the channel expansion has been at the expense of riparian cover. Almost a quarter of the Channel Migration Zone (CMZ) has been restricted by physical features, and the restrictions are primarily due to bank armor that is protecting agricultural land.

Since 1950, over 7,500 feet of side channels in Reach A4 have been blocked by berms, which have caused a 25 percent drop in braiding parameter for the reach. Russian olive has colonized these historic channels. Like many other reaches the loss of active side channels in this reach has been accompanied by a lengthening of the main thread. Between 1950 and 2001, the main channel lengthened by about 1,000 feet through the 3.3 mile reach.

Land use in Reach A4 is predominantly agricultural, although there are several hundred acres of urban/exurban development associated with the town of Big Timber. Most of the agricultural land is non-irrigated; however there are hundreds of acres of flood, sprinkler, and pivot irrigation in the reach. Almost 150 acres of irrigated ground are within the 5-year floodplain in Reach A4, and most of that commonly flooded ground is south of the fairgrounds. This area also has most of the 160 acres of mapped wetlands in the reach.

There is one mapped dump site in Reach A4, which is on the high terrace edge at Big Timber. There is also one major petroleum product pipeline in the reach that runs parallel to the river on its north side. The pipeline is owned by ConocoPhillips, and passes under both Big Timber Creek and Otter Creek within 1,500 feet of the Yellowstone River.

Almost 200 acres of land in Reach A4 are within the mapped Channel Migration Zone. This includes 83 acres of flood, 42 acres of sprinkler, and 37 acres of pivot. A total of 21 acres of land in the CMZ has been developed to urban/exurban use.

This area of the upper Yellowstone River has seen three severe floods in the last 20 years. The 1996 and 1997 floods were very damaging, early-June events that peaked at 37,100 and 38,000 cfs, respectively. At the time, these were considered to be sequential 100-year floods. Then in late June of 2011, the river peaked at 40,600 cfs, which is currently the flood of record at Livingston. This flood exceeded a 100-year event, with both the 1996/1997 events considered to have exceeded a 75-year flood.

A hydrologic evaluation of flow depletions indicates that flow alterations over the last century have been moderate in this reach. The mean annual flood is estimated to have dropped from 11,900 cfs to 11,500 cfs, a drop of about 3.4 percent. The biggest influence has been on low flows: severe low flows described as 7Q10 (the lowest average 7-day flow anticipated every ten years) for summer months has dropped from an estimated 1,880 cfs to 1,620 cfs with human development, a reduction of 14 percent. More typical summer low flows, described as the summer 95% flow duration, have dropped from 1,760 cfs under unregulated conditions to 1,680 cfs under regulated conditions at the Livingston gage, a reduction of 4.6 percent.

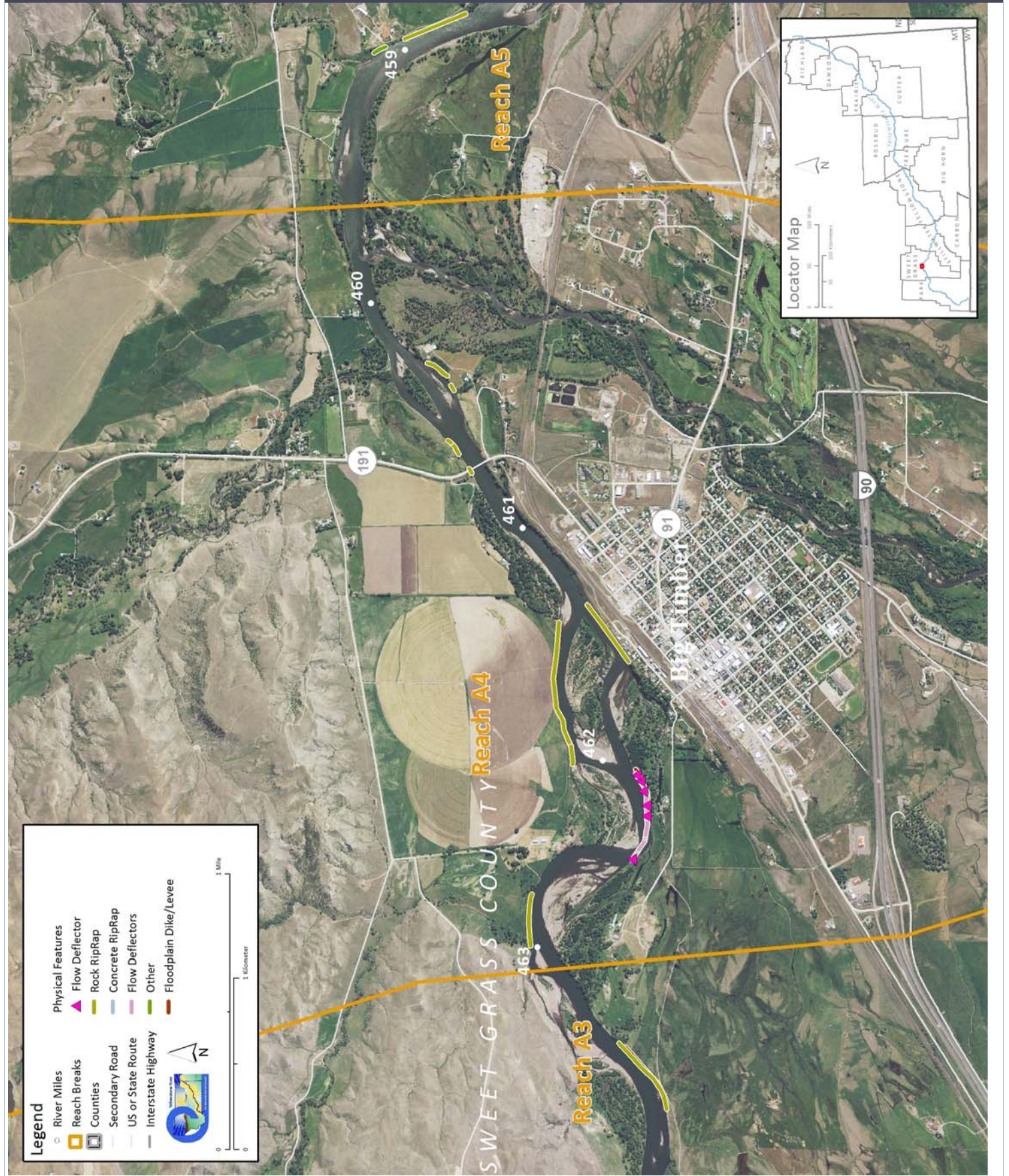
CEA-Related observations in Reach A4 include:

- Restriction of the Historic Migration Zone (HMZ) isolating side channels and reducing riparian turnover.
- Primary channel lengthening in association with loss of side channels.
- Rapid migration and channel realignment resulting in barb flanking and abandonment of rock in channel.
- Isolation of historic channels (over 7,500 feet) by berms.
- Russian olive colonization within isolated side channels.
- Riparian recruitment (cottonwood establishment) on islands created by channel migration.

Recommended Practices (may include Yellowstone River Recommended Practices--YRRPs) for Reach A4 include:

- Removal of flanked armor at RM 462.3
- Side channel restoration/management (RM 461.2, RM 462)
- CMZ management due to encroachment (200 acres restricted)
- Russian olive removal (2.7 acres)
- Solid waste removal from dump on right bank at RM 461
- Pipeline management at Big Timber Creek and Otter Creek tributary crossings just north of Yellowstone River.

PHYSICAL FEATURES MAP (2011)



HYDROLOGIC SUMMARY

Hydrologic data available for the Reach Narratives include data from representative gaging stations, modeling from the COE from the Big Horn river upstream, and modeling by the USGS for the Big Horn River to the Missouri River confluence. Gaging stations that best represent the watershed area within any reach are used to describe the flood history within the reach. Hydrology modeling results generated for all reaches provides unregulated and regulated flow values. Seasonal and annual flow duration data generated by the USGS are available for reaches C10 through D13.

Gage Representation (Gage-Based): Livingston

Flood History

Year	Date	Flow on Date	Return Interval	Gage No	Downstream Gage	Upstream Gage
1971	Jun 23	29,200	10-25 yr		6214500	6192500
1902	Jun 11	30,100	10-25 yr		Billings	Livingston
1943	Jun 20	30,600	10-25 yr		1929-2015	1929-2015
1974	Jun 17	36,300	50-100 yr		Distance To (miles)	95.3
1996	Jun 10	37,100	50-100 yr			43.6
1997	Jun 6	38,000	50-100 yr			
2011	Jun 30	40,600	>100-yr			

Discharge

	1.01 Yr	2 Yr	5 Yr	10 Yr	50 Yr	100 Yr	500 Yr	7Q10 Summer	95% Sum. Duration
Unregulated	11,900	23,300	29,200	32,900	40,300	43,400	50,300	1,880	1,760
Regulated	11,500	22,900	28,800	32,500	40,000	43,200	50,100	1,620	1,680
% Change	-3.36%	-1.72%	-1.37%	-1.22%	-0.74%	-0.46%	-0.40%	-13.83%	-4.55%

AERIAL PHOTOGRAPHY

A variety of aerial photographic sources provide the basis for much of the Cumulative Effects Assessment analysis. The table below lists the air photos compiled for the reach and the associated discharge at the most representative USGS gaging station.

	Source	Acquisition Date	Type	Scale	Gage	Discharge
1950	USGS-EROS	7/5/1948 - 7/13/51	B/W	1:23,600	6192500	9810
1976	USCOE	28-Sep-76	B/W	1:24,000	6192500	2560
1995	USGS DOQQ	8/28/97 - 9/11/96	B/W		6192500	4840
2001	NRCS	August 2-8, 2001	CIR	1:24,000	6192500	2000
2005	NAIP	08/25/2005	color	1-meter pixels	6192500	2390
2005	NAIP	08/21/2005	color	1-meter pixels	6192500	2630
2007	Woolpert	10/15/2007 - 11/2/2007	Color		6192500	
2009	NAIP	7/7/2009	Color	1-meter pixels	6192500	11300
2011	NAIP	8/22/2011	Color	1-meter pixels	6192500	5480
2013	NAIP	06/28/2013	color	1-meter pixels	6192500	
2013	NAIP	08/21/2013	color	1-meter pixels	6192500	

PHYSICAL FEATURES

Several efforts to capture the types and extents of physical features in the corridor have been generated by the CEA study. The 2001 Physical Features Inventory was performed through helicopter/video Rapid Aerial Assessment by the NRCS (NRCS, 2001) and did not include Park County. This inventory includes point and linear features that represent bank armor, irrigation structures, transportation encroachments, and areas of accelerated erosion. Bank armor mapped in the 2001 inventory only reflects features on the active channel margin, and thus excludes off-channel features on historic side channels. Some floodplain restriction features such as dikes and levees in the 2001 Physical Features Inventory may extend well beyond the active channel. In 2013, the 2001 inventory was revised to include Park County. At that time, some attribute inconsistencies in the original data were addressed. This dataset was then updated to reflect conditions in the 2011 NAIP imagery.

For Stillwater, Yellowstone and Dawson Counties, a Physical Features Timeline was generated that includes additional mapping based on aerial photography and assigns approximate dates of feature construction based on observed presence/absence in historic imagery between the 1950s and 2005 (DTM and AGI, 2008). The Physical Features Timeline contains features that were not mapped in the 2001 inventory (e.g. bank armor abandoned in floodplain areas by 2001). As such the total bank armor extent in the 2005 data is commonly greater than that identified in 2001 or 2013.

Note: As the goal for each physical features mapping effort were different, with differing mapping extents, there will be discrepancies between total feature lengths (e.g. length of rock riprap) in each data set.

2001 and 2011 Physical Features Bankline Inventories

Feature Class	Feature Type	2001 Length (ft)	% of Bankline	2011 Length (ft)	% of Bankline	2001-2011 Change
Stream Stabilization						
	Rock RipRap	6,311	17.2%	6,143	16.8%	-168
	Flow Deflectors	449	1.2%	352	1.0%	-98
	Between Flow Deflectors	1,337	3.7%	581	1.6%	-757
	Feature Type Totals	8,097	22.1%	7,075	19.3%	-1,022
Floodplain Control						
	Transportation Encroachment	429	1.2%	429	1.2%	0
	Floodplain Dike/Levee	986	2.7%	986	2.7%	0
	Feature Type Totals	1,415	3.9%	1,415	3.9%	0
	Reach Totals	9,512	26.0%	8,490	23.2%	-1,022

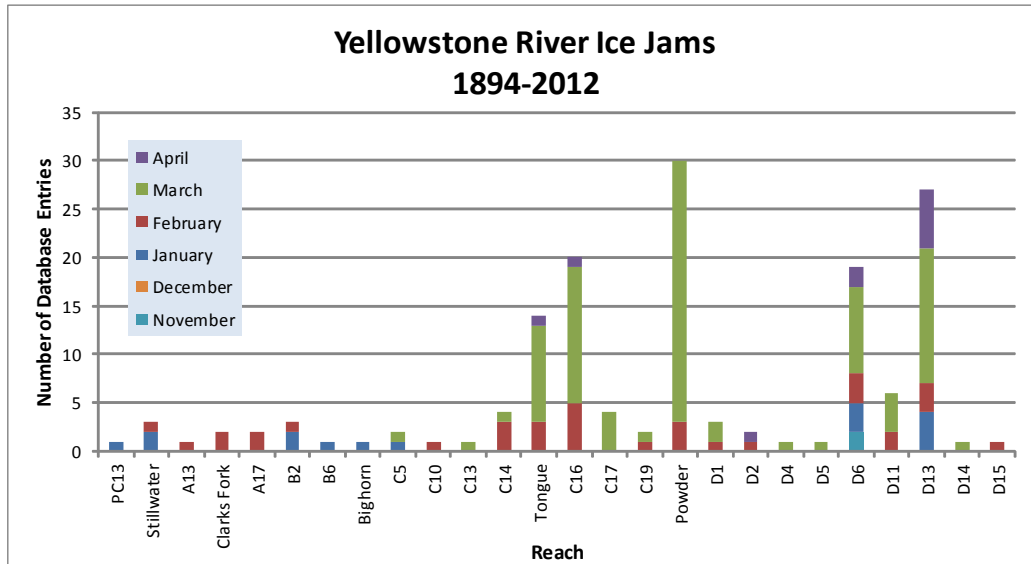
Intent of Bank Protection: 2001

The 2001 bank protection features were assessed for the 'intent' of what they protect.

Feature Type	Irrigated	Non-Irrig.	Ag. Infrastr.	Road	Interstate	Railroad	Urban	Exurban
Flow Deflectors/Between FDs	0	0	1,788	0	0	0	0	0
Rock RipRap	272	1,312	466	0	0	0	1,351	456
Totals	272	1,312	2,253	0	0	0	1,351	456

ICE JAMS

Ice jam data were obtained from the National Ice Jam Database maintained by the Ice Engineering Group at Army Corps of Engineers Cold Regions Research and Engineering Laboratory (<https://rsgis.crrel.usace.army.mil/icejam/>). From this database, Yellowstone River ice jams are summarized by reach in the Yellowstone River Historic Events Timeline (DTM and AGI, 2008b). The basic information for each ice jam is presented as a list of events. The graph represents the number of database entries for a reach. Note that a single jam event may have multiple entries.



GEOMORPHIC

The geomorphology data presented below consist of measured changes in Braiding Parameter since 1950 and blocked side channels. Braiding parameter is a measure of the total length of side channels relative to that of the main channel. The braiding parameter is calculated as the sum of anabranching and primary channel lengths divided by the primary channel length. Secondary channels within the bankfull margins are a function of flow stage and hence were not included in the braiding parameter calculation. If a reach has a braiding parameter of 3, then the total bankfull channel length is three times that of the main channel. The mean braiding parameter measured for all 88 reaches is 1.8.

Blocked side channels that were either plugged with a small dike or cutoff by larger features such as a levee or road prism were identified for the pre and post-1950s eras.

Additional geomorphic parameters are discussed in more detail in the study report and appendices.

Braiding (Bankfull)

	Primary Chan. Length (ft)	Anab. Ch. Length (ft)	Bankfull Braiding Parameter		% Change in Braiding
1950	17,375	16,020	1.92	1950 to 1976:	-8.19%
1976	17,028	13,019	1.76	1976 to 1995:	-17.10%
1995	18,251	8,448	1.46	1995 to 2001:	-2.22%
2001	18,302	7,877	1.43	1950 to 2001:	-25.58%
Change 1950 - 2001	928	-8,143	-0.49		

Length of Side Channels Blocked

Pre-1950s (ft)	0
Post-1950s (ft)	7,575

HYDRAULICS

Available hydraulic information includes county-based HEC-RAS modeling efforts by the Army Corps of Engineers with the exclusion of Park County. Floodplain modeling was performed for four conditions representing a developed and undeveloped floodplain, and unregulated and regulated flows for the 1.5, 2, 5, 10, 20, 50, 100, 200, and 500-year events. Park County has limited FEMA hydraulic modeling and was not included in the analysis.

The results of HEC-RAS modeling for the 5 and 100-year flood events were assessed to compare the extents of inundated area for the pristine (undeveloped floodplain, unregulated flows) and developed (developed floodplain, regulated flows) conditions. The data sets provided for each flow condition were unioned in the GIS to identify areas where the inundated extent differed. These areas of human-caused floodplain isolation due to either flow alterations or physical features such as levees. For the 100-year flood event, isolated areas greater than 5 acres were attributed with the interpreted reason for isolation (railroad, levee, etc.). The resulting values are presented as acres and percent of the pristine floodplain that has been isolated. The pristine floodplain is defined as the total floodplain footprint minus the area of the mapped 2001 bankfull channel (mapped islands were included in the floodplain area).

Floodplain Isolation

	100-Year		5-Year	
	Isolated Acres	% of Floodplain	Isolated Acres	% of Floodplain
Non-Structural (hydrology, geomorphic, etc.)	0	0.0%		
Agriculture (generally relates to field boundaries)	0	0.0%		
Agriculture (isolated by canal or large ditch)	0	0.0%		
Levee/Riprap (protecting agricultural lands)	0	0.0%		
Levee/Riprap (protecting urban, industrial, etc.)	0	0.0%		
Railroad	0	0.0%		
Abandoned Railroad	0	0.0%		
Transportation (Interstate and other roads)	0	0.0%		
Total Not Isolated (Ac)	481		565	
Total Floodplain Area (Ac)	481		573	
Total Isolated (Ac)	0	0.0%	9	2.7%

The 5-year floodplain is a good allegory for the extent of the riparian zone. Thus, irrigated areas within the 5-year floodplain tend to represent riparian zones that have been converted to agriculture and may result in additional bank protection to protect the agricultural production and irrigation infrastructure.

	Flood	Sprinkler	Pivot	Total
Irrigated Acres within the 5 Year Flooplain:	95	41	14	150

CHANNEL MIGRATION ZONE

A series of Channel Migration Maps were developed for the Yellowstone River from Gardiner to its mouth in McKenzie County, North Dakota (Thatcher, Swindell, and Boyd, 2009). These maps and their accompanying report can be accessed from the YRCDC Website. The channel migration zone (CMZ) developed for the Yellowstone River is defined as a composite area made up of the existing channel, the historic channel since 1950 (Historic Migration Zone, or HMZ), and an Erosion Buffer that encompasses areas prone to channel erosion over the next 100 years. Areas within this CMZ that have been isolated by constructed features such as armor or floodplain dikes are attributed as "Restricted Migration Areas" (RMA). Beyond the CMZ boundaries, outlying areas that pose risks of channel avulsion are identified as "Avulsion Potential Zones".

Mean 50-Yr Migration Distance (ft)	Erosion Buffer (ft)	Total CMZ Acreage	Restricted CMZ Acreage	% Restricted Migration Area	Total AHZ Acreage	Restricted AHZ Acreage	% Restricted Avulsion Area
376	753	779	169	22%	12	12	100%

2011 Restricted Migration Area Summary

Note that these data reflect the observed conditions in the 2011 aerial photography (NAIP for Park and Sweet Grass Counties, COE for the rest of the river).

Reason for Restriction	Land Use Protected	RMA Acres	Percent of CMZ
Road/Railroad	Prism		
	Public Road	19	2.4%
RipRap			
	Urban Residential	5	0.6%
	Non-Irrigated	52	6.6%
	Irrigated	50	6.4%
	Exurban Residential	20	2.6%
Dike/Levee			
	Non-Irrigated	37	4.6%
	Totals	183	23.1%

Land Uses within the CMZ (Acres)

Flood Irrigation	Sprinkler Irrigation	Pivot Irrigation	Urban/ExUrban	Transportation
84.9	42.2	37.6	20.5	5.8

LAND USE

Land uses were mapped from aerial photography Gardiner to the confluence of the Missouri River in North Dakota for four time periods: 1950s, 1976, 2001, and 2011. Mapping was performed at approximately 1:6,000 to ensure consistent mapping across all data sets. Typically, if a feature could not be easily mapped at the target mapping scale, it was not separated out from the adjacent land use.

A four-tiered system was used to allow analysis at a variety of levels. Tier 1 breaks land use into Agricultural and Non-Agricultural uses. Tier two subdivided uses into productive Agricultural Land and Infrastructure for the Agricultural land, and Urban, Exurban and Transportation categories for the Non-Agricultural land. Tier three further breaks down land uses into more refined categories such as Irrigated or Non-Irrigated and Residential, Commercial, or Industrial. Finally, Tier 4 focuses primarily on the productive agricultural lands, identifying the type of irrigation (Pivot, Sprinkler or Flood).

Land Use Timeline - Tiers 2 and 3

Feature Class	Feature Type	Acres				% of Reach Area			
		1950	1976	2001	2011	1950	1976	2001	2011
Agricultural Infrastructure									
	Canal	0	0	0	0	0.0%	0.0%	0.0%	0.0%
	Agricultural Roads	0	0	0	0	0.0%	0.0%	0.0%	0.0%
	Other Infrastructure	113	146	129	139	3.7%	4.8%	4.2%	4.6%
	Totals	113	146	129	139	3.7%	4.8%	4.2%	4.6%
Agricultural Land									
	Non-Irrigated	1,219	1,431	1,249	1,273	40.2%	47.2%	41.2%	42.0%
	Irrigated	1,162	858	900	882	38.3%	28.3%	29.7%	29.1%
	Totals	2,381	2,289	2,148	2,155	78.5%	75.5%	70.9%	71.1%
Channel									
	Channel	278	283	292	299	9.2%	9.3%	9.6%	9.9%
	Totals	278	283	292	299	9.2%	9.3%	9.6%	9.9%
ExUrban									
	ExUrban Other	0	0	0	0	0.0%	0.0%	0.0%	0.0%
	ExUrban Undeveloped	0	0	28	19	0.0%	0.0%	0.9%	0.6%
	ExUrban Industrial	0	0	14	0	0.0%	0.0%	0.5%	0.0%
	ExUrban Commercial	22	22	36	44	0.7%	0.7%	1.2%	1.5%
	ExUrban Residential	0	0	42	42	0.0%	0.0%	1.4%	1.4%
	Totals	22	23	120	105	0.7%	0.7%	3.9%	3.5%
Transportation									
	Public Road	42	42	45	45	1.4%	1.4%	1.5%	1.5%
	Interstate	0	0	1	1	0.0%	0.0%	0.0%	0.0%
	Railroad	19	19	19	19	0.6%	0.6%	0.6%	0.6%
	Totals	61	61	64	64	2.0%	2.0%	2.1%	2.1%
Urban									
	Urban Other	0	0	0	0	0.0%	0.0%	0.0%	0.0%
	Urban Residential	61	60	78	78	2.0%	2.0%	2.6%	2.6%
	Urban Commercial	50	89	142	120	1.7%	2.9%	4.7%	4.0%
	Urban Undeveloped	65	63	53	66	2.2%	2.1%	1.8%	2.2%
	Urban Industrial	0	17	5	5	0.0%	0.6%	0.2%	0.2%
	Totals	177	229	278	269	5.8%	7.6%	9.2%	8.9%

Land Use Timeline - Tiers 3 and 4

Feature Class	Feature Type	Acres				% of Reach Area				Change Between Years (% of Agricultural Land)			
		1950	1976	2001	2011	1950	1976	2001	2011	'50-76	'76-01	'01-11	'50-11
Irrigated													
	Sprinkler	0	0	208	195	0.0%	0.0%	9.7%	9.0%	0.0%	9.7%	-0.7%	9.0%
	Pivot	0	0	0	302	0.0%	0.0%	0.0%	14.0%	0.0%	0.0%	14.0%	14.0%
	Flood	1,162	858	692	385	48.8%	37.5%	32.2%	17.9%	-11.3%	-5.3%	-14.3%	-30.9%
	Totals	1,162	858	900	882	48.8%	37.5%	41.9%	40.9%	-11.3%	4.4%	-1.0%	-7.9%

Non-Irrigated

Multi-Use	1,027	1,167	1,123	1,128	43.1%	51.0%	52.3%	52.3%	7.9%	1.3%	0.1%	9.2%
Hay/Pasture	192	263	125	145	8.1%	11.5%	5.8%	6.7%	3.4%	-5.7%	0.9%	-1.3%
Totals	1,219	1,431	1,249	1,273	51.2%	62.5%	58.1%	59.1%	11.3%	-4.4%	1.0%	7.9%

RIPARIAN

Riparian mapping data are derived from the Yellowstone River Riparian Vegetation Mapping study (DTM/AGI 2008). This study coarsely mapped the riparian vegetation communities using 1950's, 1976-1977, and 2001 aerial imagery in a GIS environment. The polygons are digitized at a scale of approximately 1:7,500, with a minimum mapping unit of approximately 10 acres. The goal of the delineation was to capture areas of similar vegetation structure as they appeared on the aerial imagery, while maintaining a consistent scale.

The "Riparian Turnover" values quantify the total area within the active channel area that converted from either woody vegetation to open bar or water, or from open bar or water to woody vegetation. A comparison of these values allows some consideration of overall riparian encroachment into the river corridor from 1950 to 2001.

Riparian Mapping

Statistic	Shrub (Acres)			Closed Timber (Acres)			Open Timber (Acres)		
	1950	1976	2001	1950	1976	2001	1950	1976	2001
Min	0.5	0.1	1.7	1.9	1.5	1.5	0.7	3.9	5.6
Max	5.1	23.0	7.3	57.5	40.4	48.0	8.9	9.7	12.3
Average	2.4	2.7	3.6	18.4	11.3	14.7	5.6	6.4	8.4
Sum	22.0	46.6	21.7	275.5	181.0	205.3	22.6	19.1	25.2

Riparian Turnover

Conversion of riparian areas to channel, or from channel to riparian between the 1950's and 2001 data set.

Riparian to Channel (acres) 78.5

Channel to Riparian (acres) 42.7

Riparian Encroachment (acres) -35.8

Riparian Recruitment

Creation of riparian areas between 1950s and 2001.	1950s Channel Mapped as 2011 Riparian (Ac)	0.0
	1950s Floodplain Mapped as 2011 Channel (Ac)	19.7
	Total Recruitment (1950s to 2011)(Ac)	19.7

WETLANDS

Wetland areas were mapped to National Wetland Inventory standards by the Montana Natural Heritage Program. Palustrine wetlands within the mapped 100-year inundation boundary were extracted and summarized into four categories: Riverine (Unconsolidated Bottom - UB, Aquatic Bed - AB, and Unconsolidated Shore - US), Emergent - EM, Scrub-Shrub - SS, and Forested - FO.

	Riverine	Emergent	Scrub/Shrub	Forested	Total
Mapped Acres	3.7	140.0	20.5	0.0	164.1
Acres/Valley Mile	1.3	47.6	7.0	0.0	

RUSSIAN OLIVE

Russian olive is considered an invasive species and its presence in the Yellowstone River corridor is fairly recent. As such, its spread can be used as a general indicator of invasive plants within the corridor. It has the added benefit of being easily identified in multi-spectral aerial photography, making it possible to inventory large areas using remote techniques.

In 2011, Natural Resources Conservation Service (NRCS) in Bozeman, MT conducted an inventory of Russian olive locations in the Yellowstone River watershed. This study utilized the Feature Analyst extension within ArcGIS to interpret multi-spectral 2008 NAIP imagery for the presence of Russian olive. The resulting analysis was converted from raster format to a polygon ESRI shape file for distribution and further analysis within a GIS environment.

This work scope was tasked with integrating the resulting Russian olive inventory into the Yellowstone River Conservation Districts Council (YRDC) Cumulative Effects Assessment (CEA) GIS and associated reach-based database. Additionally, analysis of Russian olive within the corridor was conducted to characterize its distribution in throughout the corridor and its association with other corridor data sets.

	Floodplain Area (Ac)	% of Floodplain	Other Area (Ac)	Inside RMA (Ac)	Inside '50s Channel (Ac)	Inside 50s Island (Ac)
Russian Olive in Reach	2.70	0.35%	1.27	1.16	1.36	0.92

FISHERIES SUMMARY

Fisheries data available for the Reach Narratives include low-flow and high-flow habitat mapping of 2001 conditions for 406 miles of river, extending from the mouth upstream to a point approximately 8 miles upstream of Park City. Habitat mapping was performed remotely on the 2001 CIR aerial photography utilizing habitat classifications developed by Montana Fish, Wildlife, and Parks (DTM 2009). Historic habitat mapping using the 1950's imagery is limited to Reach B1 (high-flow) and D9 (low and high-flow).

Fisheries field sampling data have been provided by Ann Marie Reinhold (MSU). In this study, the Yellowstone River from Park City to Sidney was divided into five segments. Within each segment, fish were sampled in reaches modified by riprap ("treatment reaches") and relatively unmodified reaches ("control reaches"). Fish sampling was conducted during summer and autumn of 2009, 2010, and 2011. Boat electrofishing, trammel nets, mini-fyke nets and bag seines were used to collect data from river bends.

Fish presence data is only presented for those reaches that were sampled.

The Low Flow Habitat Mapping followed schema developed by Montana Fish Wildlife and Parks to identify key habitat units for certain aquatic species.

AVIAN

Birds were sampled in 2006 and 2007 by Danielle Jones of Montana State University. Point count methods were used at 304 randomly chosen sites in 21 braided or anabranching reaches. Each site was visited multiple times within a season, and sites were visited in both years. Birds were sampled in grassland, shrubland, and cottonwood forest habitats. Additional bird data was collected by Amy Cilimburg of Montana Audubon in summer 2012. High priority areas for data collection were identified with the assistance of the YRCDC Technical Advisory Committee. The Audubon methodology recorded data for a wider variety of bird species relative to the MSU study, including raptors and waterfowl.

CULTURAL INVENTORY SUMMARY

The Yellowstone River Cultural Inventory - 2006 documents the variety and intensity of different perspectives and values held by people who share the Yellowstone River. Between May and November of 2006, a total of 313 individuals participated in the study. They represented agricultural, civic, recreational, or residential interest groups. Also, individuals from the Crow and the Northern Cheyenne tribes were included.

There are three particular goals associated with the investigation. The first goal is to document how the people of the Yellowstone River describe the physical character of the river and how they think the physical processes, such as floods and erosion, should be managed. Within this goal, efforts have been made to document participants' views regarding the many different bank stabilization techniques employed by landowners. The second goal is to document the degree to which the riparian zone associated with the river is recognized and valued by the participants. The third goal is to document concerns regarding the management of the river's resources. Special attention is given to the ways in which residents from diverse geographical settings and diverse interest groups view river management and uses. The results illustrate the commonalities of thought and the complexities of concerns expressed by those who share the resources of the Yellowstone River.

Summary of Cultural Views in Region A

In the study segment, Laurel to Springdale, three themes emerge as dominant across the four interest groups. One theme focuses on the changing riverbank profile as more and more residential homes are built on the river's edge. The second theme focuses on the river as a powerful and dynamic physical entity. The third is about the changing social profiles of their communities and how those changes influence user practices.