

<b>County</b>	Treasure	<b>Upstream River Mile</b>	282
<b>Classification</b>	PCB: Partially confined braided	<b>Downstream River Mile</b>	278.2
<b>General Location</b>	Below Yellowstone Diversion	<b>Length</b>	3.80 mi (6.12 km)
<b>General Comments</b>	Below Yellowstone Diversion		

## Narrative Summary

Reach C4 is located in Treasure County, below Yellowstone Diversion Dam. Amelia Island Fishing Access Site is located in the middle of the reach. The reach is a 3.8 mile long Partially Confined Braided reach type, indicating some influence of the valley wall along with fairly common mid-channel bars. Within this reach the river trends toward and along the north valley wall near Hysham.

There are almost 5,000 feet of bank armor in the reach, all of which is rock riprap protecting flood irrigated fields at RM 279. Channel migration at the upstream end of this armor will pose risk of flanking as the bankline continues to erode to the south. A total of 13 percent of the bank is armored. Land use is dominated by agriculture, with 371 acres of pivot irrigation development since 1950. Physical features such as bank armor, dikes, and levees have isolated 9 percent of the Channel Migration Zone in Reach C4. All of the armor is protecting agricultural land. There are 22 acres of land in the CMZ under pivot irrigation.

Reach C4 has lost 8,200 feet of side channel length since 1950; however none of those lost channels were mapped as intentionally blocked.

Reach C4 shows a reduction in floodplain turnover rates from 3.4 acres/valley mile/year from 1950-1976 to 1.8 acres/valley mile/year from 1976-2001. There has also been a net loss of 15.5 acres of mid-channel bars since 1950, and a 10 acre increase in bank-attached bars, indicating a loss in overall low flow channel complexity. About 120 acres of riparian area has been cleared for irrigation, which is 18 percent of the total mapped 1950 riparian zone. There are 34 acres of Russian olive in the reach.

Over 300 acres of 100-year floodplain has been isolated by human development, and all of that isolation is due to agricultural development on the south side of the river. The isolation reflects 20 percent of the total 100-year floodplain. The 5-year floodplain is even more affected; 35 percent of the historic 5-year floodplain is no longer inundated at that frequency. The isolation of the historic 5-year floodplain, which is due primarily to flow alterations, has been associated with increased development in these areas; currently there are about 160 acres of flood irrigated land and 40 acres of pivot within the historic 5-year floodplain.

Reach C4 was sampled as part of the avian study. A total of 39 bird species were identified in the reach. Two bird species identified by the Montana Natural Heritage Program as Potential Species of Concern (PSOC) were also found, the Chimney Swift, and the Ovenbird. In contrast to most other reaches, Reach C4 has seen an increase in the forested area that is at low risk of cowbird parasitism since 1950. At that time, there were 43 acres per valley mile of such forest, and that number increased to 138 acres per valley mile by 2001.

A hydrologic evaluation of flow depletions indicates that flow alterations over the last century have been major in this reach. The 2-year flood, which strongly influences overall channel form, has dropped by 23 percent. Low flows have also been impacted; severe low flows described as 7Q10 (the lowest average 7-day flow anticipated every ten years) for summer months has dropped from an estimated 4,620 cfs to 2,960 cfs with human development, a reduction of 36 percent. More typical summer low flows, described as the summer 95% flow duration, have dropped from 6,150 cfs under unregulated conditions to 3,320 cfs under regulated conditions at Reach C10 downstream where the analysis begins, a reduction of 46 percent.

CEA-Related observations in Reach C4 include:

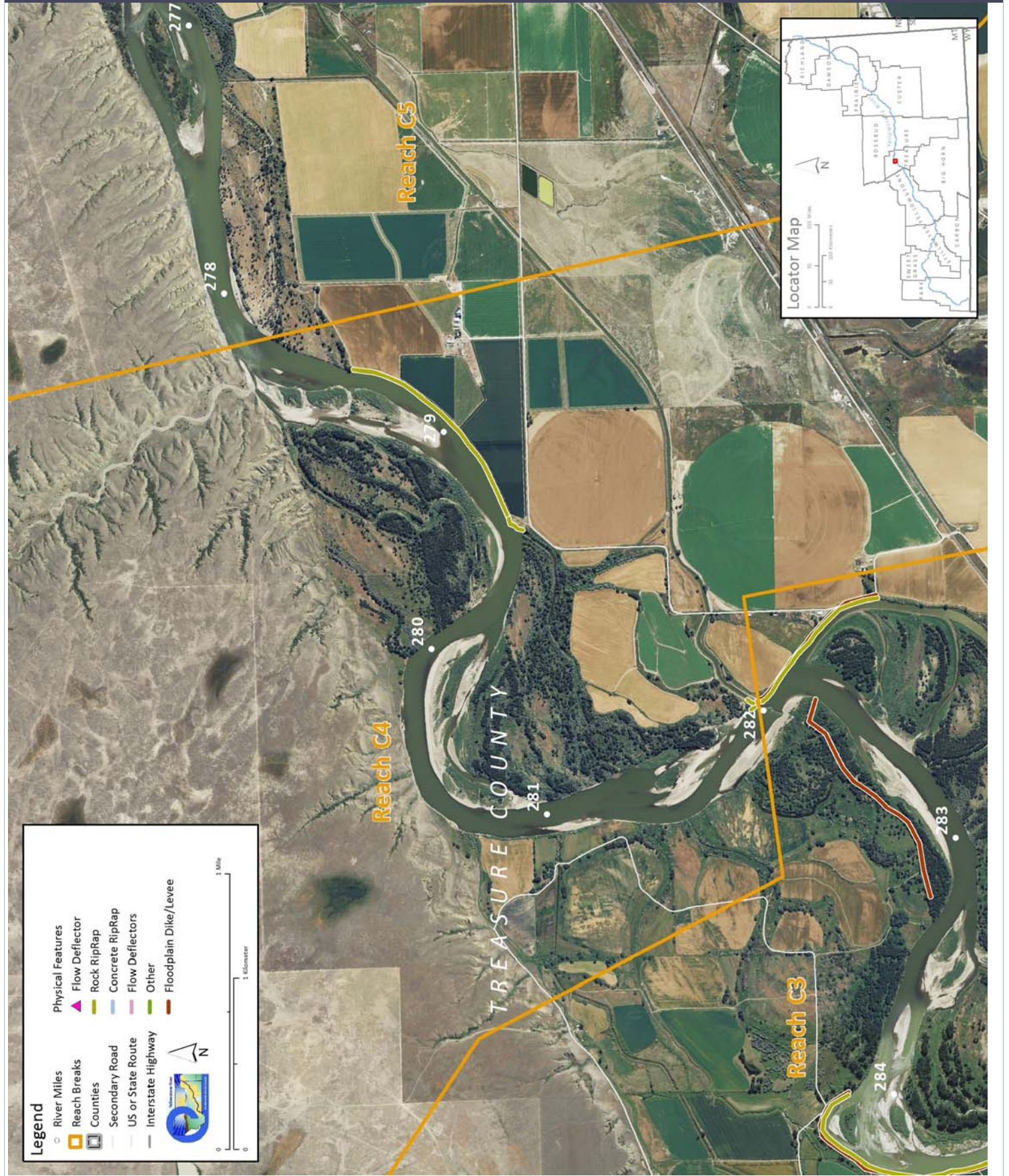
- Influence of flow alterations on floodplain inundation and riparian extent
- Increase in area at low risk of cowbird parasitism with riparian encroachment

Recommended Practices (may include Yellowstone River Recommended Practices--YRRPs) for Reach C4 include:

- Russian olive removal



## PHYSICAL FEATURES MAP (2011)



## HYDROLOGIC SUMMARY

Hydrologic data available for the Reach Narratives include data from representative gaging stations, modeling from the COE from the Big Horn river upstream, and modeling by the USGS for the Big Horn River to the Missouri River confluence. Gaging stations that best represent the watershed area within any reach are used to describe the flood history within the reach. Hydrology modeling results generated for all reaches provides unregulated and regulated flow values. Seasonal and annual flow duration data generated by the USGS are available for reaches C10 through D13.

### Gage Representation (Gage-Based): Miles City

#### Flood History

Year	Date	Flow on Date	Return Interval	Gage No	Downstream Gage	Upstream Gage
1974	Jun 22	75,400	10-25 yr	6309000	6309000	6214500
1997	Jun 15	83,300	10-25 yr	Miles City	Miles City	Billings
1943	Jun 26	83,700	10-25 yr	1929-2015	1929-2015	1929-2015
2011	May 24	85,400	10-25 yr	Distance To (miles)	94.2	82.4
1944	Jun 19	96,300	50-100 yr			
1978	May 22	102,000	50-100 yr			

#### Discharge

	1.01 Yr	2 Yr	5 Yr	10 Yr	50 Yr	100 Yr	500 Yr	7Q10 Summer	95% Sum. Duration
Unregulated		60,900	76,700	87,000	110,000	120,000	143,000	4,620	3,846
Regulated		47,100	61,300	70,700	91,200	100,000	121,000	2,960	2,227
% Change		-22.66%	-20.08%	-18.74%	-17.09%	-16.67%	-15.38%	-35.93%	-42.10%

## AERIAL PHOTOGRAPHY

A variety of aerial photographic sources provide the basis for much of the Cumulative Effects Assessment analysis. The table below lists the air photos compiled for the reach and the associated discharge at the most representative USGS gaging station.

	Source	Acquisition Date	Type	Scale	Gage	Discharge
1950	USGS-EROS	26-Aug-49	B/W	1:14,800	6309000	3620
1976	USCOE	29-Sep-76	B/W	1:24,000	6309000	9520
1995	USGS DOQQ	1995?	B/W		6295000	
2001	NRCS	August 2-8, 2001	CIR	1:24,000	6295000	3500
2005	NAIP	07/13/2005	color	1-meter pixels	6309000	17700
2007	Woolpert	10/15/2007 - 11/2/0007	Color			
2009	NAIP	7/30/2009	Color	1-meter pixels	6309000	13800
2011	USCOE	October 2012	color	1-ft pixel	6309000	8100
2011	NAIP	7/20/2011	Color	1-meter pixels	6309000	46100
2011	NAIP	7/17/2011	Color	1-meter pixels	6309000	54600
2013	NAIP	07/20/2013	color	1-meter pixels	6309000	



## PHYSICAL FEATURES

Several efforts to capture the types and extents of physical features in the corridor have been generated by the CEA study. The 2001 Physical Features Inventory was performed through helicopter/video Rapid Aerial Assessment by the NRCS (NRCS, 2001) and did not include Park County. This inventory includes point and linear features that represent bank armor, irrigation structures, transportation encroachments, and areas of accelerated erosion. Bank armor mapped in the 2001 inventory only reflects features on the active channel margin, and thus excludes off-channel features on historic side channels. Some floodplain restriction features such as dikes and levees in the 2001 Physical Features Inventory may extend well beyond the active channel. In 2013, the 2001 inventory was revised to include Park County. At that time, some attribute inconsistencies in the original data were addressed. This dataset was then updated to reflect conditions in the 2011 NAIP imagery.

For Stillwater, Yellowstone and Dawson Counties, a Physical Features Timeline was generated that includes additional mapping based on aerial photography and assigns approximate dates of feature construction based on observed presence/absence in historic imagery between the 1950s and 2005 (DTM and AGI, 2008). The Physical Features Timeline contains features that were not mapped in the 2001 inventory (e.g. bank armor abandoned in floodplain areas by 2001). As such the total bank armor extent in the 2005 data is commonly greater than that identified in 2001 or 2013.

Note: As the goal for each physical features mapping effort were different, with differing mapping extents, there will be discrepancies between total feature lengths (e.g. length of rock riprap) in each data set.

### 2001 and 2011 Physical Features Bankline Inventories

Feature Class	Feature Type	2001 Length (ft)	% of Bankline	2011 Length (ft)	% of Bankline	2001-2011 Change
Stream Stabilization						
	Rock RipRap	4,376	11.0%	4,972	12.5%	595
	<b>Feature Type Totals</b>	<b>4,376</b>	<b>11.0%</b>	<b>4,972</b>	<b>12.5%</b>	<b>595</b>
	<b>Reach Totals</b>	<b>4,376</b>	<b>11.0%</b>	<b>4,972</b>	<b>12.5%</b>	<b>595</b>

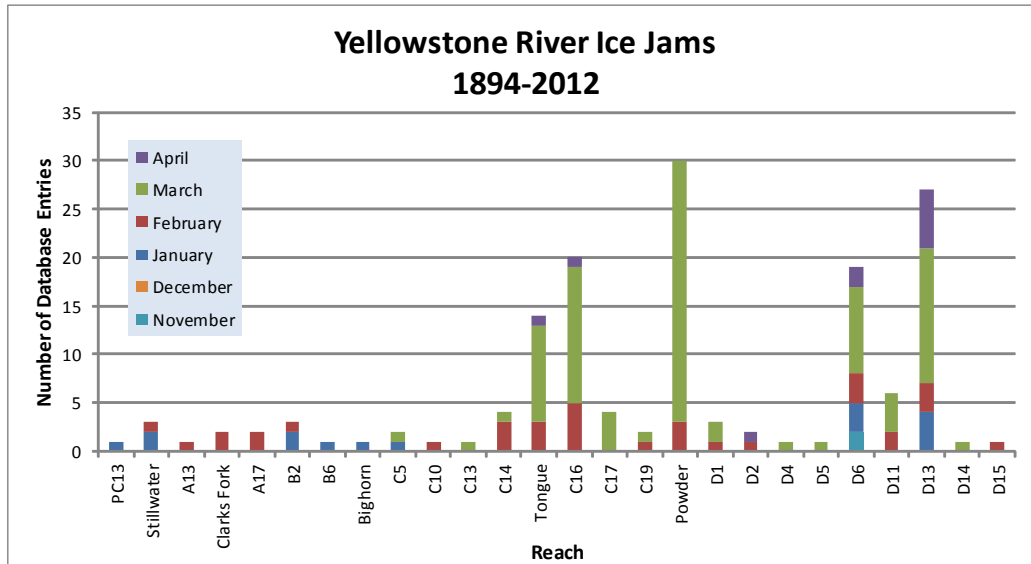
### Intent of Bank Protection: 2001

The 2001 bank protection features were assessed for the 'intent' of what they protect.

Feature Type	Irrigated	Non-Irrig.	Ag. Infrastr.	Road	Interstate	Railroad	Urban	Exurban
Rock RipRap	4,346	0	0	0	0	0	0	0
<b>Totals</b>	<b>4,346</b>	<b>0</b>	<b>0</b>	<b>0</b>	<b>0</b>	<b>0</b>	<b>0</b>	<b>0</b>

## ICE JAMS

Ice jam data were obtained from the National Ice Jam Database maintained by the Ice Engineering Group at Army Corps of Engineers Cold Regions Research and Engineering Laboratory (<https://rsgis.crrel.usace.army.mil/icejam/>). From this database, Yellowstone River ice jams are summarized by reach in the Yellowstone River Historic Events Timeline (DTM and AGI, 2008b). The basic information for each ice jam is presented as a list of events. The graph represents the number of database entries for a reach. Note that a single jam event may have multiple entries.



## GEOMORPHIC

The geomorphology data presented below consist of measured changes in Braiding Parameter since 1950 and blocked side channels. Braiding parameter is a measure of the total length of side channels relative to that of the main channel. The braiding parameter is calculated as the sum of anabranching and primary channel lengths divided by the primary channel length. Secondary channels within the bankfull margins are a function of flow stage and hence were not included in the braiding parameter calculation. If a reach has a braiding parameter of 3, then the total bankfull channel length is three times that of the main channel. The mean braiding parameter measured for all 88 reaches is 1.8.

Blocked side channels that were either plugged with a small dike or cutoff by larger features such as a levee or road prism were identified for the pre and post-1950s eras.

Additional geomorphic parameters are discussed in more detail in the study report and appendices.

### Braiding (Bankfull)

	Primary Chan. Length (ft)	Anab. Ch. Length (ft)	Bankfull Braiding Parameter		% Change in Braiding
1950	18,505	14,169	1.77	1950 to 1976:	-28.18%
1976	19,287	5,171	1.27	1976 to 1995:	4.10%
1995	19,319	6,184	1.32	1995 to 2001:	-1.59%
2001	19,946	5,966	1.30	1950 to 2001:	-26.42%
<b>Change 1950 - 2001</b>	<b>1,441</b>	<b>-8,203</b>	<b>-0.47</b>		

### Length of Side Channels Blocked

Pre-1950s (ft)	0
Post-1950s (ft)	0

## HYDRAULICS

Available hydraulic information includes county-based HEC-RAS modeling efforts by the Army Corps of Engineers with the exclusion of Park County. Floodplain modeling was performed for four conditions representing a developed and undeveloped floodplain, and unregulated and regulated flows for the 1.5, 2, 5, 10, 20, 50, 100, 200, and 500-year events. Park County has limited FEMA hydraulic modeling and was not included in the analysis.

The results of HEC-RAS modeling for the 5 and 100-year flood events were assessed to compare the extents of inundated area for the pristine (undeveloped floodplain, unregulated flows) and developed (developed floodplain, regulated flows) conditions. The data sets provided for each flow condition were unioned in the GIS to identify areas where the inundated extent differed. These areas of human-caused floodplain isolation due to either flow alterations or physical features such as levees. For the 100-year flood event, isolated areas greater than 5 acres were attributed with the interpreted reason for isolation (railroad, levee, etc.). The resulting values are presented as acres and percent of the pristine floodplain that has been isolated. The pristine floodplain is defined as the total floodplain footprint minus the area of the mapped 2001 bankfull channel (mapped islands were included in the floodplain area).

### Floodplain Isolation

	100-Year		5-Year	
	Isolated Acres	% of Floodplain	Isolated Acres	% of Floodplain
Non-Structural (hydrology, geomorphic, etc.)	0	0.0%		
Agriculture (generally relates to field boundaries)	0	0.0%		
Agriculture (isolated by canal or large ditch)	101	6.2%		
Levee/Riprap (protecting agricultural lands)	223	13.6%		
Levee/Riprap (protecting urban, industrial, etc.)	0	0.0%		
Railroad	0	0.0%		
Abandoned Railroad	0	0.0%		
Transportation (Interstate and other roads)	0	0.0%		
<b>Total Not Isolated (Ac)</b>	<b>1317</b>		<b>1076</b>	
<b>Total Floodplain Area (Ac)</b>	<b>1641</b>		<b>1440</b>	
<b>Total Isolated (Ac)</b>	<b>324</b>	<b>19.7%</b>	<b>364</b>	<b>34.7%</b>

The 5-year floodplain is a good allegory for the extent of the riparian zone. Thus, irrigated areas within the 5-year floodplain tend to represent riparian zones that have been converted to agriculture and may result in additional bank protection to protect the agricultural production and irrigation infrastructure.

	Flood	Sprinkler	Pivot	Total
Irrigated Acres within the 5 Year Flooplain:	232	0	1	<b>232</b>

## CHANNEL MIGRATION ZONE

A series of Channel Migration Maps were developed for the Yellowstone River from Gardiner to its mouth in McKenzie County, North Dakota (Thatcher, Swindell, and Boyd, 2009). These maps and their accompanying report can be accessed from the YRCDC Website. The channel migration zone (CMZ) developed for the Yellowstone River is defined as a composite area made up of the existing channel, the historic channel since 1950 (Historic Migration Zone, or HMZ), and an Erosion Buffer that encompasses areas prone to channel erosion over the next 100 years. Areas within this CMZ that have been isolated by constructed features such as armor or floodplain dikes are attributed as “Restricted Migration Areas” (RMA). Beyond the CMZ boundaries, outlying areas that pose risks of channel avulsion are identified as “Avulsion Potential Zones”.

Mean 50-Yr Migration Distance (ft)	Erosion Buffer (ft)	Total CMZ Acreage	Restricted CMZ Acreage	% Restricted Migration Area	Total AHZ Acreage	Restricted AHZ Acreage	% Restricted Avulsion Area
386	772	1,031	114	11%	234	0	0%

### 2011 Restricted Migration Area Summary

Note that these data reflect the observed conditions in the 2011 aerial photography (NAIP for Park and Sweet Grass Counties, COE for the rest of the river).

Reason for Restriction	Land Use Protected	RMA Acres	Percent of CMZ
RipRap			
	Irrigated	114	9.0%
<b>Totals</b>		<b>114</b>	<b>9.0%</b>

### Land Uses within the CMZ (Acres)

Flood Irrigation	Sprinkler Irrigation	Pivot Irrigation	Urban/ ExUrban	Transportation
269.9	0.0	22.2	0.0	2.2



## LAND USE

Land uses were mapped from aerial photography Gardiner to the confluence of the Missouri River in North Dakota for four time periods: 1950s, 1976, 2001, and 2011. Mapping was performed at approximately 1:6,000 to ensure consistent mapping across all data sets. Typically, if a feature could not be easily mapped at the target mapping scale, it was not separated out from the adjacent land use.

A four-tiered system was used to allow analysis at a variety of levels. Tier 1 breaks land use into Agricultural and Non-Agricultural uses. Tier two subdivided uses into productive Agricultural Land and Infrastructure for the Agricultural land, and Urban, Exurban and Transportation categories for the Non-Agricultural land. Tier three further breaks down land uses into more refined categories such as Irrigated or Non-Irrigated and Residential, Commercial, or Industrial. Finally, Tier 4 focuses primarily on the productive agricultural lands, identifying the type of irrigation (Pivot, Sprinkler or Flood).

### Land Use Timeline - Tiers 2 and 3

Feature Class	Feature Type	Acres				% of Reach Area			
		1950	1976	2001	2011	1950	1976	2001	2011
Agricultural Infrastructure									
	Canal	32	32	32	32	1.0%	1.0%	1.0%	1.0%
	Agricultural Roads	0	0	0	0	0.0%	0.0%	0.0%	0.0%
	Other Infrastructure	34	26	5	5	1.1%	0.8%	0.2%	0.2%
	<b>Totals</b>	<b>66</b>	<b>58</b>	<b>37</b>	<b>37</b>	<b>2.0%</b>	<b>1.8%</b>	<b>1.1%</b>	<b>1.1%</b>
Agricultural Land									
	Non-Irrigated	1,477	1,265	1,567	1,502	45.2%	38.7%	48.0%	46.0%
	Irrigated	1,279	1,437	1,143	1,178	39.2%	44.0%	35.0%	36.1%
	<b>Totals</b>	<b>2,756</b>	<b>2,701</b>	<b>2,710</b>	<b>2,680</b>	<b>84.4%</b>	<b>82.8%</b>	<b>83.0%</b>	<b>82.1%</b>
Channel									
	Channel	411	474	486	516	12.6%	14.5%	14.9%	15.8%
	<b>Totals</b>	<b>411</b>	<b>474</b>	<b>486</b>	<b>516</b>	<b>12.6%</b>	<b>14.5%</b>	<b>14.9%</b>	<b>15.8%</b>
ExUrban									
	ExUrban Other	0	0	0	0	0.0%	0.0%	0.0%	0.0%
	ExUrban Undeveloped	0	0	0	0	0.0%	0.0%	0.0%	0.0%
	ExUrban Industrial	0	0	0	0	0.0%	0.0%	0.0%	0.0%
	ExUrban Commercial	0	0	0	0	0.0%	0.0%	0.0%	0.0%
	ExUrban Residential	0	0	0	0	0.0%	0.0%	0.0%	0.0%
	<b>Totals</b>	<b>0</b>	<b>0</b>	<b>0</b>	<b>0</b>	<b>0.0%</b>	<b>0.0%</b>	<b>0.0%</b>	<b>0.0%</b>
Transportation									
	Public Road	22	22	22	22	0.7%	0.7%	0.7%	0.7%
	Interstate	0	0	0	0	0.0%	0.0%	0.0%	0.0%
	Railroad	9	9	9	9	0.3%	0.3%	0.3%	0.3%
	<b>Totals</b>	<b>31</b>	<b>31</b>	<b>31</b>	<b>31</b>	<b>0.9%</b>	<b>0.9%</b>	<b>0.9%</b>	<b>0.9%</b>
Urban									
	Urban Other	0	0	0	0	0.0%	0.0%	0.0%	0.0%
	Urban Residential	0	0	0	0	0.0%	0.0%	0.0%	0.0%
	Urban Commercial	0	0	0	0	0.0%	0.0%	0.0%	0.0%
	Urban Undeveloped	0	0	0	0	0.0%	0.0%	0.0%	0.0%
	Urban Industrial	0	0	0	0	0.0%	0.0%	0.0%	0.0%
	<b>Totals</b>	<b>0</b>	<b>0</b>	<b>0</b>	<b>0</b>	<b>0.0%</b>	<b>0.0%</b>	<b>0.0%</b>	<b>0.0%</b>

### Land Use Timeline - Tiers 3 and 4

Feature Class	Feature Type	Acres				% of Reach Area				Change Between Years (% of Agricultural Land)			
		1950	1976	2001	2011	1950	1976	2001	2011	'50-76	'76-01	'01-11	'50-11
Irrigated													
	Sprinkler	0	0	0	0	0.0%	0.0%	0.0%	0.0%	0.0%	0.0%	0.0%	0.0%
	Pivot	0	0	0	371	0.0%	0.0%	0.0%	13.8%	0.0%	0.0%	13.8%	13.8%
	Flood	1,279	1,437	1,143	808	46.4%	53.2%	42.2%	30.1%	6.8%	-11.0%	-12.0%	-16.3%
	<b>Totals</b>	<b>1,279</b>	<b>1,437</b>	<b>1,143</b>	<b>1,178</b>	<b>46.4%</b>	<b>53.2%</b>	<b>42.2%</b>	<b>44.0%</b>	<b>6.8%</b>	<b>-11.0%</b>	<b>1.8%</b>	<b>-2.5%</b>

Non-Irrigated

Multi-Use	1,477	1,265	1,532	1,467	53.6%	46.8%	56.5%	54.7%	-6.8%	9.7%	-1.8%	1.1%
Hay/Pasture	0	0	35	35	0.0%	0.0%	1.3%	1.3%	0.0%	1.3%	0.0%	1.3%
<b>Totals</b>	<b>1,477</b>	<b>1,265</b>	<b>1,567</b>	<b>1,502</b>	<b>53.6%</b>	<b>46.8%</b>	<b>57.8%</b>	<b>56.0%</b>	<b>-6.8%</b>	<b>11.0%</b>	<b>-1.8%</b>	<b>2.5%</b>

## RIPARIAN

Riparian mapping data are derived from the Yellowstone River Riparian Vegetation Mapping study (DTM/AGI 2008). This study coarsely mapped the riparian vegetation communities using 1950's, 1976-1977, and 2001 aerial imagery in a GIS environment. The polygons are digitized at a scale of approximately 1:7,500, with a minimum mapping unit of approximately 10 acres. The goal of the delineation was to capture areas of similar vegetation structure as they appeared on the aerial imagery, while maintaining a consistent scale.

The "Riparian Turnover" values quantify the total area within the active channel area that converted from either woody vegetation to open bar or water, or from open bar or water to woody vegetation. A comparison of these values allows some consideration of overall riparian encroachment into the river corridor from 1950 to 2001.

### Riparian Mapping

Statistic	Shrub (Acres)			Closed Timber (Acres)			Open Timber (Acres)		
	1950	1976	2001	1950	1976	2001	1950	1976	2001
Min	0.8	0.0	1.3	1.7	0.7	0.5	15.2	2.8	9.4
Max	24.8	29.8	12.8	342.0	197.7	255.9	26.4	62.6	56.4
Average	9.2	9.8	6.0	90.2	68.1	77.5	20.6	22.7	23.0
Sum	100.8	127.9	71.7	541.4	340.5	387.4	82.3	113.5	91.8

### Riparian Turnover

Conversion of riparian areas to channel, or from channel to riparian between the 1950's and 2001 data set.

Riparian to Channel (acres) 63.2

Channel to Riparian (acres) 75.5

**Riparian Encroachment (acres) 12.4**

### Riparian Recruitment

Creation of riparian areas between 1950s and 2001.	1950s Channel Mapped as 2011 Riparian (Ac)	76.7
	1950s Floodplain Mapped as 2011 Channel (Ac)	8.8
	<b>Total Recruitment (1950s to 2011)(Ac)</b>	<b>85.5</b>

## WETLANDS

Wetland areas were mapped to National Wetland Inventory standards by the Montana Natural Heritage Program. Palustrine wetlands within the mapped 100-year inundation boundary were extracted and summarized into four categories: Riverine (Unconsolidated Bottom - UB, Aquatic Bed - AB, and Unconsolidated Shore - US), Emergent - EM, Scrub-Shrub - SS, and Forested - FO.

	Riverine	Emergent	Scrub/Shrub	Forested	Total
<b>Mapped Acres</b>	1.8	30.7	25.1	0.0	<b>57.5</b>
<b>Acres/Valley Mile</b>	0.8	12.9	10.6	0.0	

## RUSSIAN OLIVE

Russian olive is considered an invasive species and its presence in the Yellowstone River corridor is fairly recent. As such, its spread can be used as a general indicator of invasive plants within the corridor. It has the added benefit of being easily identified in multi-spectral aerial photography, making it possible to inventory large areas using remote techniques.

In 2011, Natural Resources Conservation Service (NRCS) in Bozeman, MT conducted an inventory of Russian olive locations in the Yellowstone River watershed. This study utilized the Feature Analyst extension within ArcGIS to interpret multi-spectral 2008 NAIP imagery for the presence of Russian olive. The resulting analysis was converted from raster format to a polygon ESRI shape file for distribution and further analysis within a GIS environment.

This work scope was tasked with integrating the resulting Russian olive inventory into the Yellowstone River Conservation Districts Council (YRDC) Cumulative Effects Assessment (CEA) GIS and associated reach-based database. Additionally, analysis of Russian olive within the corridor was conducted to characterize its distribution in throughout the corridor and its association with other corridor data sets.

	Floodplain Area (Ac)	% of Floodplain	Other Area (Ac)	Inside RMA (Ac)	Inside '50s Channel (Ac)	Inside 50s Island (Ac)
<b>Russian Olive in Reach</b>	33.88	1.58%	6.69	0.02	6.62	1.78

## FISHERIES SUMMARY

Fisheries data available for the Reach Narratives include low-flow and high-flow habitat mapping of 2001 conditions for 406 miles of river, extending from the mouth upstream to a point approximately 8 miles upstream of Park City. Habitat mapping was performed remotely on the 2001 CIR aerial photography utilizing habitat classifications developed by Montana Fish, Wildlife, and Parks (DTM 2009). Historic habitat mapping using the 1950's imagery is limited to Reach B1 (high-flow) and D9 (low and high-flow).

Fisheries field sampling data have been provided by Ann Marie Reinhold (MSU). In this study, the Yellowstone River from Park City to Sidney was divided into five segments. Within each segment, fish were sampled in reaches modified by riprap ("treatment reaches") and relatively unmodified reaches ("control reaches"). Fish sampling was conducted during summer and autumn of 2009, 2010, and 2011. Boat electrofishing, trammel nets, mini-fyke nets and bag seines were used to collect data from river bends.

Fish presence data is only presented for those reaches that were sampled.

The Low Flow Habitat Mapping followed schema developed by Montana Fish Wildlife and Parks to identify key habitat units for certain aquatic species.

### Low Flow Fisheries Habitat Mapping

Habitat	2001 (Acres)		
	Bankfull	Low Flow	% of Low Flow
Scour Pool	24.6	7.2	1.5%
Rip Rap Bottom	77.3	54.3	11.2%
Bluff Pool	80.5	53.7	11.0%
Secondary Channel	40.6	33.9	7.0%
Secondary Channel (Seasonal)	46.5	19.7	4.1%
Channel Crossover	121.7	82.0	16.9%
Point Bar		36.2	7.4%
Side Bar		40.4	8.3%
Mid-channel Bar		6.4	1.3%
Island	95.0	95.0	19.5%
Dry Channel		57.4	11.8%

## AVIAN

Birds were sampled in 2006 and 2007 by Danielle Jones of Montana State University. Point count methods were used at 304 randomly chosen sites in 21 braided or anabranching reaches. Each site was visited multiple times within a season, and sites were visited in both years. Birds were sampled in grassland, shrubland, and cottonwood forest habitats. Additional bird data was collected by Amy Cilimburg of Montana Audubon in summer 2012. High priority areas for data collection were identified with the assistance of the YRCDC Technical Advisory Committee. The Audubon methodology recorded data for a wider variety of bird species relative to the MSU study, including raptors and waterfowl.

Bird Species Observed in Reach/Region		Species of Concern	Potential Species of Concern
<input checked="" type="checkbox"/> <input checked="" type="checkbox"/> American Robin	<input type="checkbox"/> <input checked="" type="checkbox"/> Chipping Sparrow	<input type="checkbox"/> <input checked="" type="checkbox"/> Killdeer	<input checked="" type="checkbox"/> <input checked="" type="checkbox"/> Song Sparrow
<input checked="" type="checkbox"/> <input checked="" type="checkbox"/> American Crow	<input type="checkbox"/> <input checked="" type="checkbox"/> Clay-collared Sparrow	<input type="checkbox"/> <input checked="" type="checkbox"/> Lark Bunting	<input type="checkbox"/> <input checked="" type="checkbox"/> Spotted Sandpiper
<input type="checkbox"/> <input type="checkbox"/> American Goldfinch	<input type="checkbox"/> <input checked="" type="checkbox"/> Cliff Swallow	<input type="checkbox"/> <input checked="" type="checkbox"/> Lark Sparrow	<input checked="" type="checkbox"/> <input checked="" type="checkbox"/> Spotted Towhee
<input type="checkbox"/> <input checked="" type="checkbox"/> American Kestrel	<input type="checkbox"/> <input checked="" type="checkbox"/> Common Grackle	<input checked="" type="checkbox"/> <input checked="" type="checkbox"/> Lazuli Bunting	<input type="checkbox"/> <input checked="" type="checkbox"/> Sharp-shinned Hawk
<input checked="" type="checkbox"/> <input checked="" type="checkbox"/> American Redstart	<input type="checkbox"/> <input checked="" type="checkbox"/> Common Merganser	<input checked="" type="checkbox"/> <input checked="" type="checkbox"/> Least Flycatcher	<input type="checkbox"/> <input checked="" type="checkbox"/> Swainson's Thrush
<input checked="" type="checkbox"/> <input checked="" type="checkbox"/> Bald Eagle	<input type="checkbox"/> <input checked="" type="checkbox"/> Common Nighthawk	<input type="checkbox"/> <input checked="" type="checkbox"/> Mallard	<input type="checkbox"/> <input checked="" type="checkbox"/> Sandhill Crane
<input type="checkbox"/> <input type="checkbox"/> Baltimore Oriole	<input type="checkbox"/> <input type="checkbox"/> Common Raven	<input type="checkbox"/> <input type="checkbox"/> Mountain Bluebird	<input checked="" type="checkbox"/> <input checked="" type="checkbox"/> Tree Swallow
<input type="checkbox"/> <input checked="" type="checkbox"/> Barn Swallow	<input checked="" type="checkbox"/> <input checked="" type="checkbox"/> Common Yellowthroat	<input checked="" type="checkbox"/> <input checked="" type="checkbox"/> Mourning Dove	<input type="checkbox"/> <input checked="" type="checkbox"/> Turkey Vulture
<input checked="" type="checkbox"/> <input checked="" type="checkbox"/> Belted Kingfisher	<input type="checkbox"/> <input checked="" type="checkbox"/> Cooper's Hawk	<input checked="" type="checkbox"/> <input checked="" type="checkbox"/> Northern Flicker	<input type="checkbox"/> <input checked="" type="checkbox"/> Upland Sandpiper
<input type="checkbox"/> <input checked="" type="checkbox"/> Black-billed Cuckoo	<input type="checkbox"/> <input checked="" type="checkbox"/> Dickcissel	<input type="checkbox"/> <input checked="" type="checkbox"/> Orchard Oriole	<input type="checkbox"/> <input checked="" type="checkbox"/> Vesper Sparrow
<input type="checkbox"/> <input checked="" type="checkbox"/> Black-billed Magpie	<input checked="" type="checkbox"/> <input checked="" type="checkbox"/> Downy Woodpecker	<input type="checkbox"/> <input type="checkbox"/> Osprey	<input checked="" type="checkbox"/> <input checked="" type="checkbox"/> Violet-green Swallow
<input checked="" type="checkbox"/> <input checked="" type="checkbox"/> Black-capped Chickadee	<input type="checkbox"/> <input checked="" type="checkbox"/> Eastern Bluebird	<input checked="" type="checkbox"/> <input checked="" type="checkbox"/> Ovenbird	<input checked="" type="checkbox"/> <input checked="" type="checkbox"/> Warbling Vireo
<input type="checkbox"/> <input checked="" type="checkbox"/> Black-and-white Warbler	<input checked="" type="checkbox"/> <input checked="" type="checkbox"/> Eastern Kingbird	<input type="checkbox"/> <input checked="" type="checkbox"/> Plumbeous Vireo	<input type="checkbox"/> <input checked="" type="checkbox"/> Western Kingbird
<input type="checkbox"/> <input checked="" type="checkbox"/> Black-headed Grosbeak	<input type="checkbox"/> <input checked="" type="checkbox"/> Eurasian Collared-dove	<input type="checkbox"/> <input checked="" type="checkbox"/> Red-headed Woodpecker	<input checked="" type="checkbox"/> <input checked="" type="checkbox"/> Western Meadowlark
<input type="checkbox"/> <input checked="" type="checkbox"/> Blue Jay	<input checked="" type="checkbox"/> <input checked="" type="checkbox"/> European Starling	<input type="checkbox"/> <input type="checkbox"/> Red-naped Sapsucker	<input checked="" type="checkbox"/> <input checked="" type="checkbox"/> Western Wood-pewee
<input type="checkbox"/> <input checked="" type="checkbox"/> Bobolink	<input checked="" type="checkbox"/> <input checked="" type="checkbox"/> Field Sparrow	<input type="checkbox"/> <input checked="" type="checkbox"/> Red Crossbill	<input checked="" type="checkbox"/> <input checked="" type="checkbox"/> White-breasted Nuthatch
<input type="checkbox"/> <input checked="" type="checkbox"/> Brewer's Blackbird	<input type="checkbox"/> <input checked="" type="checkbox"/> Franklin's Gull	<input checked="" type="checkbox"/> <input checked="" type="checkbox"/> Ring-necked Pheasant	<input type="checkbox"/> <input checked="" type="checkbox"/> White-throated Swift
<input checked="" type="checkbox"/> <input checked="" type="checkbox"/> Brown-headed Cowbird	<input type="checkbox"/> <input checked="" type="checkbox"/> Grasshopper Sparrow	<input checked="" type="checkbox"/> <input checked="" type="checkbox"/> Red-tailed hawk	<input type="checkbox"/> <input checked="" type="checkbox"/> Wild Turkey
<input type="checkbox"/> <input checked="" type="checkbox"/> Brown Creeper	<input type="checkbox"/> <input checked="" type="checkbox"/> Gray Catbird	<input type="checkbox"/> <input checked="" type="checkbox"/> Rock Dove	<input checked="" type="checkbox"/> <input checked="" type="checkbox"/> Wood Duck
<input checked="" type="checkbox"/> <input checked="" type="checkbox"/> Brown Thrasher	<input checked="" type="checkbox"/> <input checked="" type="checkbox"/> Great Blue Heron	<input checked="" type="checkbox"/> <input checked="" type="checkbox"/> Red-winged Blackbird	<input type="checkbox"/> <input type="checkbox"/> Yellow-bellied Sapsucker
<input checked="" type="checkbox"/> <input checked="" type="checkbox"/> Bullock's Oriole	<input type="checkbox"/> <input checked="" type="checkbox"/> Great Horned Owl	<input checked="" type="checkbox"/> <input checked="" type="checkbox"/> Red-eyed Vireo	<input type="checkbox"/> <input type="checkbox"/> Yellow-billed Cuckoo
<input checked="" type="checkbox"/> <input checked="" type="checkbox"/> Canada Goose	<input type="checkbox"/> <input checked="" type="checkbox"/> Hairy Woodpecker	<input type="checkbox"/> <input type="checkbox"/> Red-breasted Grosbeak	<input checked="" type="checkbox"/> <input checked="" type="checkbox"/> Yellow-breasted Chat
<input checked="" type="checkbox"/> <input checked="" type="checkbox"/> Cedar Waxwing	<input type="checkbox"/> <input type="checkbox"/> House Finch	<input type="checkbox"/> <input checked="" type="checkbox"/> Say's Phoebe	<input type="checkbox"/> <input type="checkbox"/> Yellow-headed Blackbird
<input checked="" type="checkbox"/> <input checked="" type="checkbox"/> Chimney Swift	<input checked="" type="checkbox"/> <input checked="" type="checkbox"/> House Wren	<input type="checkbox"/> <input checked="" type="checkbox"/> Savannah Sparrow	<input checked="" type="checkbox"/> <input checked="" type="checkbox"/> Yellow Warbler



## CULTURAL INVENTORY SUMMARY

The Yellowstone River Cultural Inventory - 2006 documents the variety and intensity of different perspectives and values held by people who share the Yellowstone River. Between May and November of 2006, a total of 313 individuals participated in the study. They represented agricultural, civic, recreational, or residential interest groups. Also, individuals from the Crow and the Northern Cheyenne tribes were included.

There are three particular goals associated with the investigation. The first goal is to document how the people of the Yellowstone River describe the physical character of the river and how they think the physical processes, such as floods and erosion, should be managed. Within this goal, efforts have been made to document participants' views regarding the many different bank stabilization techniques employed by landowners. The second goal is to document the degree to which the riparian zone associated with the river is recognized and valued by the participants. The third goal is to document concerns regarding the management of the river's resources. Special attention is given to the ways in which residents from diverse geographical settings and diverse interest groups view river management and uses. The results illustrate the commonalities of thought and the complexities of concerns expressed by those who share the resources of the Yellowstone River.

### Summary of Cultural Views in Region C

In the study segment, Powder River to Big Horn River, three conversations emerged across the four interest groups. The first conversation focuses on the "familiar way of life." The conversation exposes a local identity that is tied to agriculture and to traditional forms of recreation, such as hunting and fishing. When asked if the familiar management practices are sufficient in terms of sharing the river's resources, some locals express concerns. The second conversation explicitly acknowledges that the demand for recreational access to the river's resources is in its infancy in terms of representing a problem. The third conversation focuses on controlling the river with rip-rap and dikes.