

County	Park	Upstream River Mile	499.9
Classification	PCA: Partially confined anabranching	Downstream River Mile	495.6
General Location	To just upstream of Hwy 89 bridge	Length	4.30 mi (6.92 km)

General Comments

Narrative Summary

Reach PC16 is 4.3 miles long, extending from the KPRK Bridge (Hwy 89) in Livingston almost to the Highway 89 Bridge downstream. Within the reach, the river makes a large swing from a northerly trend to an easterly trend. The reach is dynamic, as multiple wooded islands, and intermittently flows along the north valley wall. In 2001, there were about 4.2 miles of side channels in the reach, indicating that there is as almost much side channel as main channel in this segment of the Yellowstone River. In some areas the river corridor is over 2,000 feet wide.

There are over 8,000 feet of bank armor in Reach PC16, about 6,500 feet of which is rock riprap. In 2011, there were 1,700 feet of flow deflectors in the reach, after about 200 feet had been destroyed between 2001 and 2011. These flow deflectors were on a large meander bend; they were flanked, and the river has migrated to the southeast about 200 feet beyond their original location. This erosion also damaged a large diversion structure. Bank armor covers about 18 percent of the total bankline. There are also 8,200 feet of mapped floodplain dikes in the reach. Prior to 1950, a 1,900-foot long channel was blocked at its upper end by the highway and Railroad Bridge approaches at the KPRK Bridge.

Land uses in Reach PC16 are mixed, including urban/exurban, irrigated agriculture, and non-irrigated agriculture. In 1950, over 660 acres were in flood irrigation and by 2011 that number had been reduced to 70 acres, with 173 acres being converted to sprinkler irrigation and 246 to pivot. Exurban development is most dense on the left (north) bank of the river, where the valley wall consists of erosion-resistant sandstone that is out of the Channel Migration Zone.

Over 200 acres of wetlands have been mapped in Reach PC16, most of which are emergent marshes and wet meadows. Most of these wetlands are in non-irrigated hay pastures.

There is one pipeline crossing in this reach. The crossing is near Rustad Lane, and is a natural gas line owned by NW Energy, LLC.

This area of the upper Yellowstone River has seen three severe floods in the last 20 years. The 1996 and 1997 floods were very damaging, early-June events that peaked at 37,100 and 38,000 cfs, respectively. At the time, these were considered to be sequential 100-year floods. Then in late June of 2011, the river peaked at 40,600 cfs, which is currently the flood of record at Livingston. This flood exceeded a 100-year event, with both the 1996/1997 events considered to have exceeded a 75-year flood.

A hydrologic evaluation of flow depletions indicates that flow alterations over the last century have been relatively small in this reach. The biggest influence has been on low flows: severe low flows described as 7Q10 (the lowest average 7-day flow anticipated every ten years) for summer months has dropped from an estimated 1,580 cfs to 1,510 cfs with human development, a reduction of 4.4 percent. More typical summer low flows, described as the summer 95% flow duration, have dropped from 1,760 cfs under unregulated conditions to 1,680 cfs under regulated conditions at the Livingston gage, a reduction of 4.6 percent.

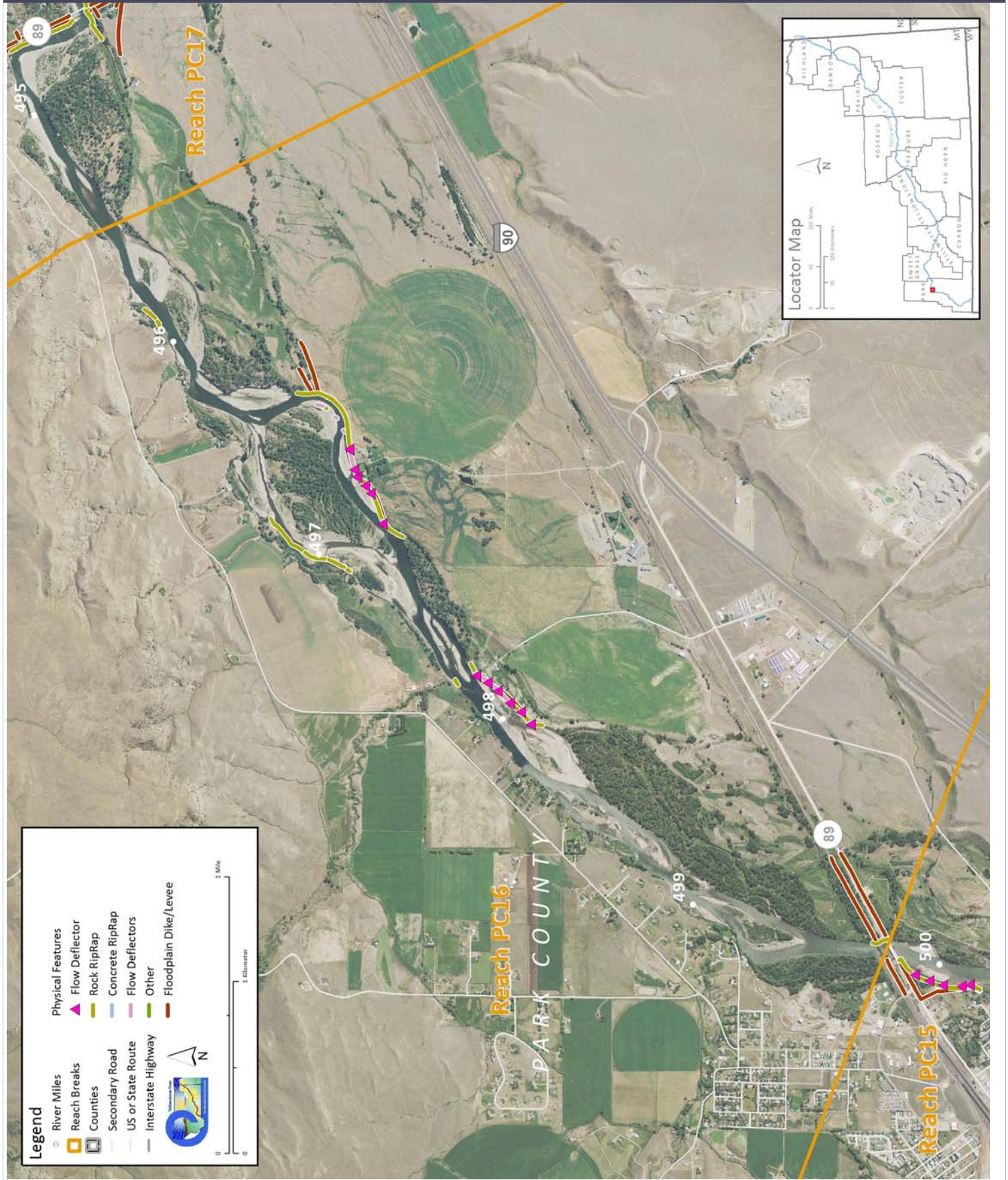
CEA-Related observations in Reach PC16 include:

- Flanking of flow deflectors and sever erosion behind.

Recommended Practices (may include Yellowstone River Recommended Practices--YRRPs) for Reach PC16 include:

- Side channel restoration below transportation embankment at RM 499.4L
- Flanked bank armor removal at RM 496.8
- CMZ Management due to current restriction of 14 percent of the Channel Migration Zone
- Pipeline Practices at natural gas crossing at RM 497.9 (natural gas may have special consideration in Practice)
- Irrigation diversion management at Vallis Ditch Diversion at RM 496.5

PHYSICAL FEATURES MAP (2011)



HYDROLOGIC SUMMARY

Hydrologic data available for the Reach Narratives include data from representative gaging stations, modeling from the COE from the Big Horn river upstream, and modeling by the USGS for the Big Horn River to the Missouri River confluence. Gaging stations that best represent the watershed area within any reach are used to describe the flood history within the reach. Hydrology modeling results generated for all reaches provides unregulated and regulated flow values. Seasonal and annual flow duration data generated by the USGS are available for reaches C10 through D13.

Gage Representation (Gage-Based): Livingston

Flood History

Year	Date	Flow on Date	Return Interval	Gage No	Downstream Gage	Upstream Gage
1971	Jun 23	29,200	10-25 yr		6214500	6192500
1902	Jun 11	30,100	10-25 yr		Billings	Livingston
1943	Jun 20	30,600	10-25 yr		1929-2015	1929-2015
1974	Jun 17	36,300	50-100 yr		Distance To (miles)	131.2
1996	Jun 10	37,100	50-100 yr			6.7
1997	Jun 6	38,000	50-100 yr			
2011	Jun 30	40,600	>100-yr			

Discharge

	1.01 Yr	2 Yr	5 Yr	10 Yr	50 Yr	100 Yr	500 Yr	7Q10 Summer	95% Sum. Duration
Unregulated	10,400	20,600	25,900	29,200	35,900	38,700	44,900	1,580	1,760
Regulated	10,300	20,500	25,800	29,100	35,800	38,600	44,800	1,510	1,680
% Change	-0.96%	-0.49%	-0.39%	-0.34%	-0.28%	-0.26%	-0.22%	-4.43%	-4.55%

AERIAL PHOTOGRAPHY

A variety of aerial photographic sources provide the basis for much of the Cumulative Effects Assessment analysis. The table below lists the air photos compiled for the reach and the associated discharge at the most representative USGS gaging station.

	Source	Acquisition Date	Type	Scale	Gage	Discharge
1948	DNR		B/W			
2005	NAIP	08/26/2005	color	1-meter pixels	6192500	2320
2009	NAIP	7/16/2009	Color	1-meter pixels	6192500	8450
2011	NAIP	8/24/2011	Color	1-meter pixels	6192500	5170
2013	NAIP	08/31/2013	color	1-meter pixels	6192500	
2013	NAIP	06/28/2013	color	1-meter pixels	6192500	

PHYSICAL FEATURES

Several efforts to capture the types and extents of physical features in the corridor have been generated by the CEA study. The 2001 Physical Features Inventory was performed through helicopter/video Rapid Aerial Assessment by the NRCS (NRCS, 2001) and did not include Park County. This inventory includes point and linear features that represent bank armor, irrigation structures, transportation encroachments, and areas of accelerated erosion. Bank armor mapped in the 2001 inventory only reflects features on the active channel margin, and thus excludes off-channel features on historic side channels. Some floodplain restriction features such as dikes and levees in the 2001 Physical Features Inventory may extend well beyond the active channel. In 2013, the 2001 inventory was revised to include Park County. At that time, some attribute inconsistencies in the original data were addressed. This dataset was then updated to reflect conditions in the 2011 NAIP imagery.

For Stillwater, Yellowstone and Dawson Counties, a Physical Features Timeline was generated that includes additional mapping based on aerial photography and assigns approximate dates of feature construction based on observed presence/absence in historic imagery between the 1950s and 2005 (DTM and AGI, 2008). The Physical Features Timeline contains features that were not mapped in the 2001 inventory (e.g. bank armor abandoned in floodplain areas by 2001). As such the total bank armor extent in the 2005 data is commonly greater than that identified in 2001 or 2013.

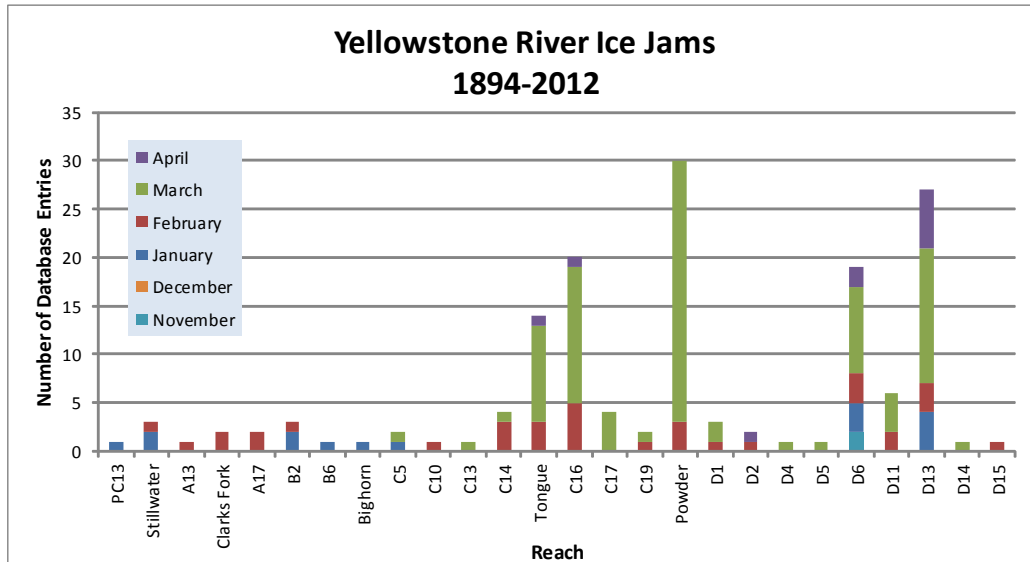
Note: As the goal for each physical features mapping effort were different, with differing mapping extents, there will be discrepancies between total feature lengths (e.g. length of rock riprap) in each data set.

2001 and 2011 Physical Features Bankline Inventories

Feature Class	Feature Type	2001 Length (ft)	% of Bankline	2011 Length (ft)	% of Bankline	2001-2011 Change
Stream Stabilization						
	Rock RipRap	4,199	9.2%	6,475	14.2%	2,276
	Flow Deflectors	784	1.7%	759	1.7%	-25
	Between Flow Deflectors	1,126	2.5%	944	2.1%	-182
	Feature Type Totals	6,109	13.4%	8,178	18.0%	2,069
Floodplain Control						
	Floodplain Dike/Levee	8,196	18.0%	7,453	16.4%	-744
	Feature Type Totals	8,196	18.0%	7,453	16.4%	-744
	Reach Totals	14,305	31.4%	15,631	34.3%	1,326

ICE JAMS

Ice jam data were obtained from the National Ice Jam Database maintained by the Ice Engineering Group at Army Corps of Engineers Cold Regions Research and Engineering Laboratory (<https://rsgis.crrel.usace.army.mil/icejam/>). From this database, Yellowstone River ice jams are summarized by reach in the Yellowstone River Historic Events Timeline (DTM and AGI, 2008b). The basic information for each ice jam is presented as a list of events. The graph represents the number of database entries for a reach. Note that a single jam event may have multiple entries.



GEOMORPHIC

The geomorphology data presented below consist of measured changes in Braiding Parameter since 1950 and blocked side channels. Braiding parameter is a measure of the total length of side channels relative to that of the main channel. The braiding parameter is calculated as the sum of anabranching and primary channel lengths divided by the primary channel length. Secondary channels within the bankfull margins are a function of flow stage and hence were not included in the braiding parameter calculation. If a reach has a braiding parameter of 3, then the total bankfull channel length is three times that of the main channel. The mean braiding parameter measured for all 88 reaches is 1.8.

Blocked side channels that were either plugged with a small dike or cutoff by larger features such as a levee or road prism were identified for the pre and post-1950s eras.

Additional geomorphic parameters are discussed in more detail in the study report and appendices.

Braiding (Bankfull)

	Primary Chan. Length (ft)	Anab. Ch. Length (ft)	Bankfull Braiding Parameter	% Change in Braiding
1950	23,645	25,912	2.10	1950 to 1976:
1976				1976 to 1995:
1995				1995 to 2001:
2001	22,759	22,182	1.97	1950 to 2001: -5.78%
Change 1950 - 2001	-887	-3,729	-0.12	

Length of Side Channels Blocked

Pre-1950s (ft)	1,901
Post-1950s (ft)	0

HYDRAULICS

Available hydraulic information includes county-based HEC-RAS modeling efforts by the Army Corps of Engineers with the exclusion of Park County. Floodplain modeling was performed for four conditions representing a developed and undeveloped floodplain, and unregulated and regulated flows for the 1.5, 2, 5, 10, 20, 50, 100, 200, and 500-year events. Park County has limited FEMA hydraulic modeling and was not included in the analysis.

The results of HEC-RAS modeling for the 5 and 100-year flood events were assessed to compare the extents of inundated area for the pristine (undeveloped floodplain, unregulated flows) and developed (developed floodplain, regulated flows) conditions. The data sets provided for each flow condition were unioned in the GIS to identify areas where the inundated extent differed. These areas of human-caused floodplain isolation due to either flow alterations or physical features such as levees. For the 100-year flood event, isolated areas greater than 5 acres were attributed with the interpreted reason for isolation (railroad, levee, etc.). The resulting values are presented as acres and percent of the pristine floodplain that has been isolated. The pristine floodplain is defined as the total floodplain footprint minus the area of the mapped 2001 bankfull channel (mapped islands were included in the floodplain area).

Floodplain Isolation

	100-Year		5-Year	
	Isolated Acres	% of Floodplain	Isolated Acres	% of Floodplain
Non-Structural (hydrology, geomorphic, etc.)				
Agriculture (generally relates to field boundaries)				
Agriculture (isolated by canal or large ditch)				
Levee/Riprap (protecting agricultural lands)				
Levee/Riprap (protecting urban, industrial, etc.)				
Railroad				
Abandoned Railroad				
Transportation (Interstate and other roads)				
Total Not Isolated (Ac)				
Total Floodplain Area (Ac)				
Total Isolated (Ac)				

The 5-year floodplain is a good allegory for the extent of the riparian zone. Thus, irrigated areas within the 5-year floodplain tend to represent riparian zones that have been converted to agriculture and may result in additional bank protection to protect the agricultural production and irrigation infrastructure.

	Flood	Sprinkler	Pivot	Total
Irrigated Acres within the 5 Year Flooplain:				

CHANNEL MIGRATION ZONE

A series of Channel Migration Maps were developed for the Yellowstone River from Gardiner to its mouth in McKenzie County, North Dakota (Thatcher, Swindell, and Boyd, 2009). These maps and their accompanying report can be accessed from the YRDC Website. The channel migration zone (CMZ) developed for the Yellowstone River is defined as a composite area made up of the existing channel, the historic channel since 1950 (Historic Migration Zone, or HMZ), and an Erosion Buffer that encompasses areas prone to channel erosion over the next 100 years. Areas within this CMZ that have been isolated by constructed features such as armor or floodplain dikes are attributed as "Restricted Migration Areas" (RMA). Beyond the CMZ boundaries, outlying areas that pose risks of channel avulsion are identified as "Avulsion Potential Zones".

Mean 50-Yr Migration Distance (ft)	Erosion Buffer (ft)	Total CMZ Acreage	Restricted CMZ Acreage	% Restricted Migration Area	Total AHZ Acreage	Restricted AHZ Acreage	% Restricted Avulsion Area
212	423	759	52	7%	221	84	38%

2011 Restricted Migration Area Summary

Note that these data reflect the observed conditions in the 2011 aerial photography (NAIP for Park and Sweet Grass Counties, COE for the rest of the river).

Reason for Restriction	Land Use Protected	RMA Acres	Percent of CMZ
Road/Railroad Prism			
	Public Road	1	0.1%
	Non-Irrigated	89	9.0%
RipRap/Flow Deflectors			
	Non-Irrigated	18	1.9%
	Irrigated	15	1.5%
RipRap			
	Non-Irrigated	6	0.6%
	Irrigated	10	1.0%
	Totals	140	14.3%

Land Uses within the CMZ (Acres)

Flood Irrigation	Sprinkler Irrigation	Pivot Irrigation	Urban/ExUrban	Transportation
0.1	18.1	8.2	12.6	5.4

LAND USE

Land uses were mapped from aerial photography Gardiner to the confluence of the Missouri River in North Dakota for four time periods: 1950s, 1976, 2001, and 2011. Mapping was performed at approximately 1:6,000 to ensure consistent mapping across all data sets. Typically, if a feature could not be easily mapped at the target mapping scale, it was not separated out from the adjacent land use.

A four-tiered system was used to allow analysis at a variety of levels. Tier 1 breaks land use into Agricultural and Non-Agricultural uses. Tier two subdivided uses into productive Agricultural Land and Infrastructure for the Agricultural land, and Urban, Exurban and Transportation categories for the Non-Agricultural land. Tier three further breaks down land uses into more refined categories such as Irrigated or Non-Irrigated and Residential, Commercial, or Industrial. Finally, Tier 4 focuses primarily on the productive agricultural lands, identifying the type of irrigation (Pivot, Sprinkler or Flood).

Land Use Timeline - Tiers 2 and 3

Feature Class	Feature Type	Acres				% of Reach Area			
		1950	1976	2001	2011	1950	1976	2001	2011
Agricultural Infrastructure									
	Canal	0	0	0	0	0.0%	0.0%	0.0%	0.0%
	Agricultural Roads	0	0	0	0	0.0%	0.0%	0.0%	0.0%
	Other Infrastructure	47	130	182	156	1.9%	5.2%	7.3%	6.3%
	Totals	47	130	182	156	1.9%	5.2%	7.3%	6.3%
Agricultural Land									
	Non-Irrigated	1,299	956	824	1,042	52.3%	38.5%	33.2%	42.0%
	Irrigated	662	802	708	488	26.7%	32.3%	28.5%	19.7%
	Totals	1,961	1,758	1,532	1,530	79.0%	70.8%	61.7%	61.6%
Channel									
	Channel	433	388	463	485	17.4%	15.6%	18.6%	19.6%
	Totals	433	388	463	485	17.4%	15.6%	18.6%	19.6%
ExUrban									
	ExUrban Other	0	0	0	0	0.0%	0.0%	0.0%	0.0%
	ExUrban Undeveloped	0	17	0	0	0.0%	0.7%	0.0%	0.0%
	ExUrban Industrial	0	31	0	0	0.0%	1.3%	0.0%	0.0%
	ExUrban Commercial	0	0	0	0	0.0%	0.0%	0.0%	0.0%
	ExUrban Residential	1	100	203	208	0.0%	4.0%	8.2%	8.4%
	Totals	1	149	203	208	0.0%	6.0%	8.2%	8.4%
Transportation									
	Public Road	27	28	28	28	1.1%	1.1%	1.1%	1.1%
	Interstate	0	0	0	0	0.0%	0.0%	0.0%	0.0%
	Railroad	5	5	5	5	0.2%	0.2%	0.2%	0.2%
	Totals	32	33	33	33	1.3%	1.3%	1.3%	1.3%
Urban									
	Urban Other	0	0	0	0	0.0%	0.0%	0.0%	0.0%
	Urban Residential	8	24	37	37	0.3%	1.0%	1.5%	1.5%
	Urban Commercial	0	0	0	0	0.0%	0.0%	0.0%	0.0%
	Urban Undeveloped	0	0	0	0	0.0%	0.0%	0.0%	0.0%
	Urban Industrial	0	0	33	33	0.0%	0.0%	1.3%	1.3%
	Totals	8	24	69	69	0.3%	1.0%	2.8%	2.8%

Land Use Timeline - Tiers 3 and 4

Feature Class	Feature Type	Acres				% of Reach Area				Change Between Years (% of Agricultural Land)			
		1950	1976	2001	2011	1950	1976	2001	2011	'50-76	'76-01	'01-11	'50-11
Irrigated													
	Sprinkler	0	0	151	173	0.0%	0.0%	9.8%	11.3%	0.0%	9.8%	1.5%	11.3%
	Pivot	0	0	244	246	0.0%	0.0%	15.9%	16.1%	0.0%	15.9%	0.1%	16.1%
	Flood	662	802	314	70	33.8%	45.6%	20.5%	4.6%	11.8%	-25.1%	-15.9%	-29.2%
	Totals	662	802	708	488	33.8%	45.6%	46.2%	31.9%	11.8%	0.6%	-14.3%	-1.8%

Non-Irrigated

Multi-Use	1,119	880	550	593	57.1%	50.0%	35.9%	38.7%	-7.0%	-14.1%	2.8%	-18.3%
Hay/Pasture	180	77	274	449	9.2%	4.4%	17.9%	29.3%	-4.8%	13.5%	11.5%	20.2%
Totals	1,299	956	824	1,042	66.2%	54.4%	53.8%	68.1%	-11.8%	-0.6%	14.3%	1.8%

RIPARIAN

Riparian mapping data are derived from the Yellowstone River Riparian Vegetation Mapping study (DTM/AGI 2008). This study coarsely mapped the riparian vegetation communities using 1950's, 1976-1977, and 2001 aerial imagery in a GIS environment. The polygons are digitized at a scale of approximately 1:7,500, with a minimum mapping unit of approximately 10 acres. The goal of the delineation was to capture areas of similar vegetation structure as they appeared on the aerial imagery, while maintaining a consistent scale.

The "Riparian Turnover" values quantify the total area within the active channel area that converted from either woody vegetation to open bar or water, or from open bar or water to woody vegetation. A comparison of these values allows some consideration of overall riparian encroachment into the river corridor from 1950 to 2001.

WETLANDS

Wetland areas were mapped to National Wetland Inventory standards by the Montana Natural Heritage Program. Palustrine wetlands within the mapped 100-year inundation boundary were extracted and summarized into four categories: Riverine (Unconsolidated Bottom - UB, Aquatic Bed - AB, and Unconsolidated Shore - US), Emergent - EM, Scrub-Shrub - SS, and Forested - FO.

	Riverine	Emergent	Scrub/Shrub	Forested	Total
Mapped Acres	10.6	154.4	51.5	0.0	216.5
Acres/Valley Mile	2.7	39.4	13.1	0.0	

RUSSIAN OLIVE

Russian olive is considered an invasive species and its presence in the Yellowstone River corridor is fairly recent. As such, its spread can be used as a general indicator of invasive plants within the corridor. It has the added benefit of being easily identified in multi-spectral aerial photography, making it possible to inventory large areas using remote techniques.

In 2011, Natural Resources Conservation Service (NRCS) in Bozeman, MT conducted an inventory of Russian olive locations in the Yellowstone River watershed. This study utilized the Feature Analyst extension within ArcGIS to interpret multi-spectral 2008 NAIP imagery for the presence of Russian olive. The resulting analysis was converted from raster format to a polygon ESRI shape file for distribution and further analysis within a GIS environment.

This work scope was tasked with integrating the resulting Russian olive inventory into the Yellowstone River Conservation Districts Council (YRCDC) Cumulative Effects Assessment (CEA) GIS and associated reach-based database. Additionally, analysis of Russian olive within the corridor was conducted to characterize its distribution in throughout the corridor and its association with other corridor data sets.

	Floodplain Area (Ac)	% of Floodplain	Other Area (Ac)	Inside RMA (Ac)	Inside '50s Channel (Ac)	Inside 50s Island (Ac)
Russian Olive in Reach	0.84	0.12%	0.83	0.29	0.12	0.05

FISHERIES SUMMARY

Fisheries data available for the Reach Narratives include low-flow and high-flow habitat mapping of 2001 conditions for 406 miles of river, extending from the mouth upstream to a point approximately 8 miles upstream of Park City. Habitat mapping was performed remotely on the 2001 CIR aerial photography utilizing habitat classifications developed by Montana Fish, Wildlife, and Parks (DTM 2009). Historic habitat mapping using the 1950's imagery is limited to Reach B1 (high-flow) and D9 (low and high-flow).

Fisheries field sampling data have been provided by Ann Marie Reinhold (MSU). In this study, the Yellowstone River from Park City to Sidney was divided into five segments. Within each segment, fish were sampled in reaches modified by riprap ("treatment reaches") and relatively unmodified reaches ("control reaches"). Fish sampling was conducted during summer and autumn of 2009, 2010, and 2011. Boat electrofishing, trammel nets, mini-fyke nets and bag seines were used to collect data from river bends.

Fish presence data is only presented for those reaches that were sampled.

The Low Flow Habitat Mapping followed schema developed by Montana Fish Wildlife and Parks to identify key habitat units for certain aquatic species.

AVIAN

Birds were sampled in 2006 and 2007 by Danielle Jones of Montana State University. Point count methods were used at 304 randomly chosen sites in 21 braided or anabranching reaches. Each site was visited multiple times within a season, and sites were visited in both years. Birds were sampled in grassland, shrubland, and cottonwood forest habitats. Additional bird data was collected by Amy Cilimburg of Montana Audubon in summer 2012. High priority areas for data collection were identified with the assistance of the YRCDC Technical Advisory Committee. The Audubon methodology recorded data for a wider variety of bird species relative to the MSU study, including raptors and waterfowl.

