

CANADA

NORTH DAKOTA

SOUTH DAKOTA

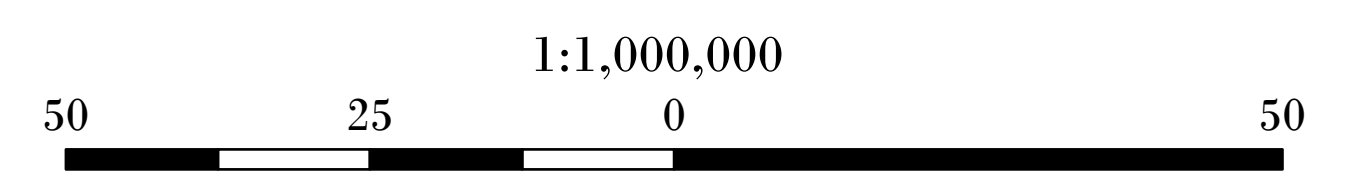
WYOMING

IDAHO

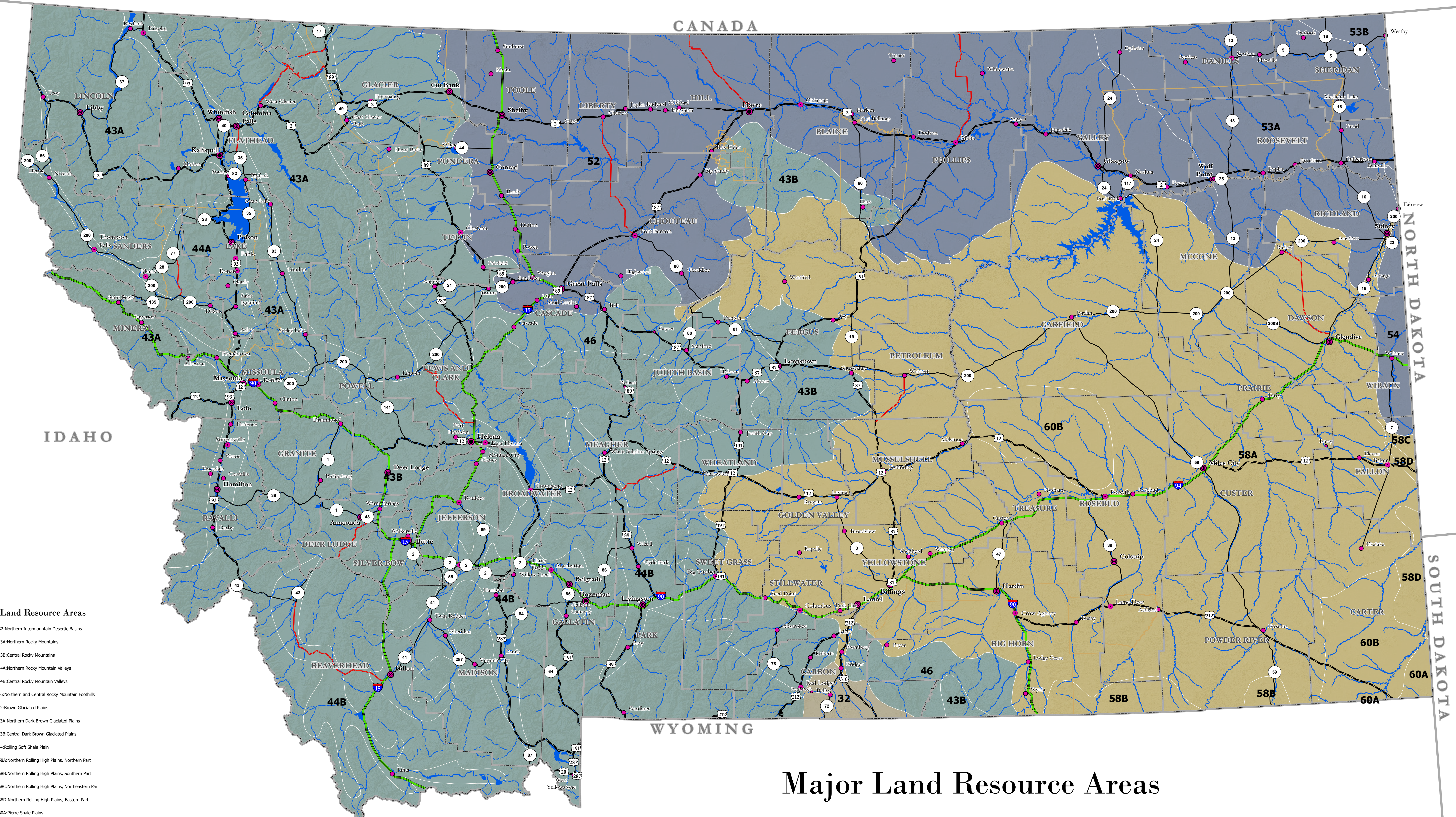
Major Land Resource Areas

- D - 32: Northern Intermountain Desertic Basins
- E - 43A: Northern Rocky Mountains
- E - 43B: Central Rocky Mountains
- E - 44A: Northern Rocky Mountain Valleys
- E - 44B: Central Rocky Mountain Valleys
- E - 46: Northern and Central Rocky Mountain Foothills
- F - 52: Brown Glaciated Plains
- F - 53A: Northern Dark Brown Glaciated Plains
- F - 53B: Central Dark Brown Glaciated Plains
- F - 54: Rolling Soft Shale Plain
- G - 58A: Northern Rolling High Plains, Northern Part
- G - 58B: Northern Rolling High Plains, Southern Part
- G - 58C: Northern Rolling High Plains, Northeastern Part
- G - 58D: Northern Rolling High Plains, Eastern Part
- G - 60A: Pierre Shale Plains
- G - 60B: Pierre Shale Plains, Northern Part

Major Land Resource Areas



January 2024 - Map Reference #18NRCS0005



This data should be used for planning purposes only. This data set is provided "as-is" without warranty of any kind. The NRCS makes no representations or warranties whatsoever with respect to the accuracy or completeness of this data set and assumes no responsibility for the suitability of this data set for a particular purpose; and NRCS will not be liable for any damages incurred as a result of errors in this data set.

