

CANADA

NORTH DAKOTA

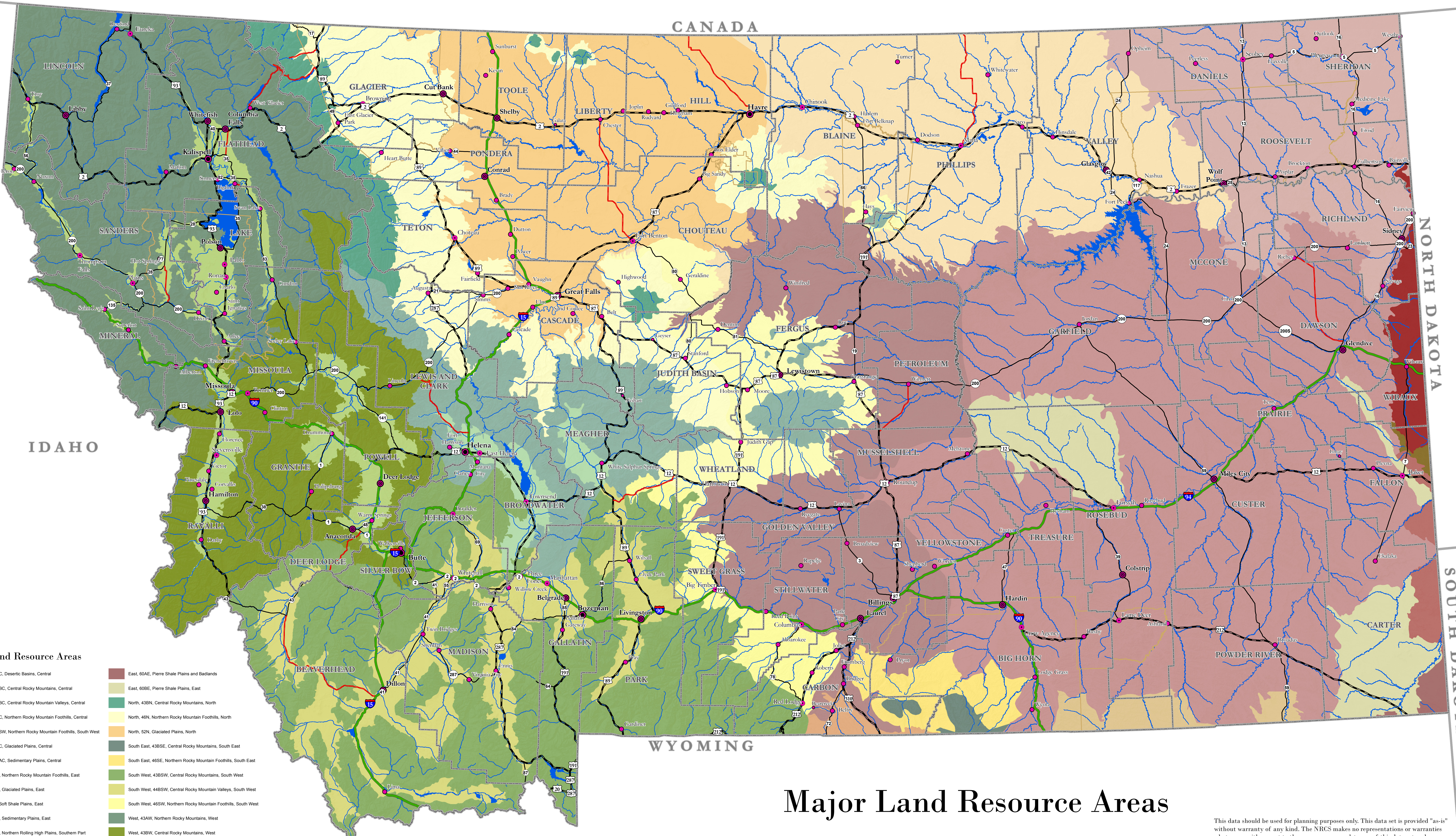
SOUTH DAKOTA

WYOMING

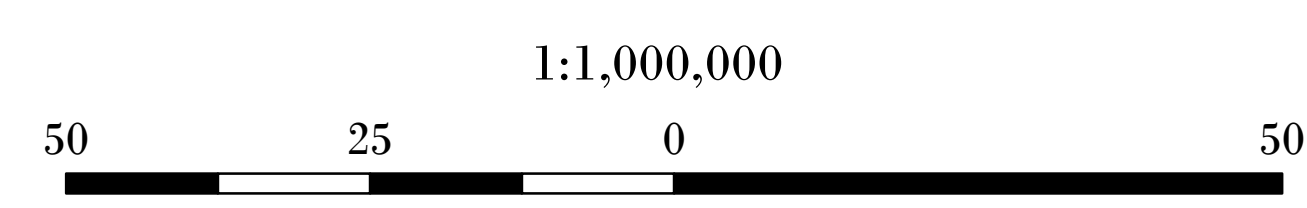
IDAHO

Major Land Resource Areas

- Central, 32C, Desertic Basins, Central
- Central, 43BC, Central Rocky Mountains, Central
- Central, 44BC, Central Rocky Mountain Valleys, Central
- Central, 46C, Northern Rocky Mountain Foothills, Central
- Central, 46SW, Northern Rocky Mountain Foothills, South West
- Central, 52C, Glaciated Plains, Central
- South East, 43BSE, Central Rocky Mountains, South East
- Central, 58AC, Sedimentary Plains, Central
- East, 46SE, Northern Rocky Mountain Foothills, East
- East, 53AE, Glaciated Plains, East
- East, 54E, Soft Shale Plains, East
- East, 58AE, Sedimentary Plains, East
- East, 58BE, Northern Rolling High Plains, Southern Part
- East, 58CE, Northern Rolling High Plains, Northeastern Part
- East, 58DE, Northern Rolling High Plains, Eastern Part
- East, 60AE, Pierre Shale Plains and Badlands
- East, 60BE, Pierre Shale Plains, East
- North, 43BN, Central Rocky Mountains, North
- North, 46N, Northern Rocky Mountain Foothills, North
- North, 52N, Glaciated Plains, North
- South East, 43BSE, Central Rocky Mountains, South East
- South East, 46SE, Northern Rocky Mountain Foothills, South East
- South West, 43BSW, Central Rocky Mountains, South West
- South West, 44BSW, Central Rocky Mountain Valleys, South West
- South West, 46SW, Northern Rocky Mountain Foothills, South West
- West, 43AW, Northern Rocky Mountains, West
- West, 43BW, Central Rocky Mountains, West
- West, 44AW, Northern Rocky Mountain Valleys, West



# Major Land Resource Areas



May 2018 - Map Reference #18NRCS0005

This data should be used for planning purposes only. This data set is provided "as-is" without warranty of any kind. The NRCS makes no representations or warranties whatsoever with respect to the accuracy or completeness of this data set and assumes no responsibility for the suitability of this data set for a particular purpose; and NRCS will not be liable for any damages incurred as a result of errors in this data set.