



MSDI Administrative Boundaries: Managed Areas Update

Meghan Burns
Montana State Library

December 2, 2021





Background

- The Montana Natural Heritage Program (MTNHP) began integrating ownership and management data into a land stewardship mapping data system in 1997
- The goal of the Montana Land Stewardship Mapping Project was to manage a single, statewide digital data set that incorporates information from both public and private entities. The project assembles information on land ownership and management, conservation easements, state and federal agencies, and land trusts
- Did not necessarily correspond to ownership – may be made up of fee lands, easements, leased lands, etc.



Current Publication

- In 2016 the Montana State Library took over management of the Managed Areas data layer as part of the Boundaries Theme as MSL was already maintaining the Public Lands and Conservation Easements in partnerships with the Montana Department of Revenue as part of the Cadastral Theme
- Goal to provide annual update. Conservation Easements and Public Lands are updated as needed (often monthly)
- The Managed Areas are published by MSL as a file geodatabase, shapefile, and web service. Discover them in the:
 - Data List
 - Digital Atlas
 - Data Bundler
 - Map Gallery
 - MTNHP Natural Heritage MapViewer

Administrative Boundaries

Administrative Boundaries are legally documented and attributed jurisdictional boundaries. These boundaries define the rights, responsibilities, and interests on the land.

Featured Content

- [Montana County Map \(pdf\)](#)
- [List of Counties \(xlsx\)](#)
- [List of Cities and Towns \(xlsx\)](#)
- [Montana Department of Commerce US Census Bureau Data and Maps](#)
- [US Census Bureau 2020 Census Info](#)

New! The U.S. Census Bureau released the [2020 Census Redistricting Summary Files](#) on August 12, 2021



Web Map Services

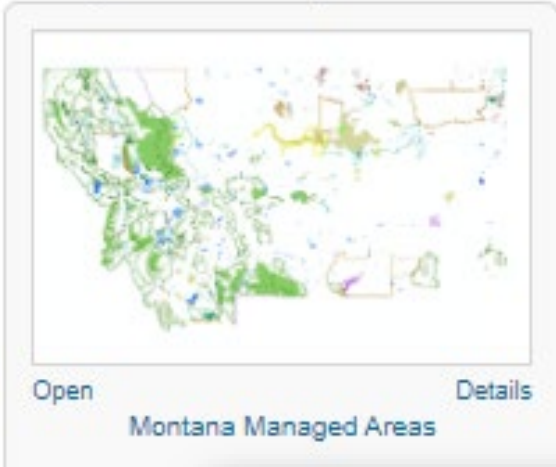
[Administrative Boundaries Service](#)

[Managed Areas](#)

Sub-theme Documentation	DownloadData/ Web Service	Definition	Data Steward	Last Published
Managed Areas	gdb / shp	Boundary of state and federal managed areas in Montana including wilderness, wild and scenic rivers, wildlife management areas, etc.	MSL/Montana Natural Heritage Program	Nov 2021

<https://msl.mt.gov/GIS/Boundaries>

Map Gallery



Montana Managed Areas

Map

Home ▾ Montana Managed Areas

Details Basemap

About Content Legend

Contents

- Parcels
- Conservation Easements
- Public Lands
- Managed Areas
- Topographic

Montana Digital Atlas

Print Base Maps View Legend

Location Managed Areas (1)

Dome Mountain Wildlife Management Area (Zoom To)

Type	Wildlife Management Area
Manager	Montana Fish, Wildlife & Parks, Region 3
Institution	
Type	State
Institution	Montana Fish, Wildlife & Parks
Acres	4,865.90
Link	Link
GAP Status	3 - managed for multiple uses - subject to extractive (e.g. mining or logging) or OHV use
Code	

Scale: 1: 354,803

Edit Map Graphics | Clear Map Graphics | Restore All Panels | Clear All Map/Report Options

Select Map Layers

Managed Areas
Managed Areas (Remove | Metadata)

Search Generate Report

Current Screen Extent
(Zoom to previous report extent)

Most Recent Search Selection
(Edit | Clear | Zoom To)

Type
Criteria
Buffer

Download Data

- Additional Map Information
- Copy Geometry
- Copy Current Map Link (including layer and search options)
- Help

<https://geoinfo.msl.mt.gov/>

mt.gov
Montana's Official State Website

MONTANA Natural Heritage Program

Home Animals Plants Ecology Wetlands Publications Data About Quick Data Search

Online Mapping

- Land Management Information in the Natural Heritage MapViewer

Maps and Information

- Download Land Management GIS Data

Find us on Facebook

Land Management Mapping

Montana's landscape is a complex, constantly changing patchwork of federal, state, private and tribal ownership. Within these ownerships are many kinds of designations, ranging from Wilderness to game ranges to conservation easements. Because information on land management is critical to effective land management, the Montana Natural Heritage Program began integrating ownership and management data into a land management mapping data system in 1997. The goal of the Montana Land Management Mapping Project is to manage a single, statewide digital data set that incorporates information from both public and private entities. It assembles public land ownership data from state and federal agencies, as well as land trusts on a regular basis, with a major database update occurring every winter.



View news about the Montana Land Management Mapping Program.

Natural Heritage Resources

- Montana Field Guide
- Animal Species of Concern Report
- Plant Species of Concern Report
- Request Information

MONTANA Natural Heritage Program

Stay Connected   Page History

Privacy & Security Accessibility Contact Us Search

mt.gov
Montana's Official State Website

<https://mtnhp.org/stew.asp>

Management Types Include

Federal

- USFWS
 - National Wildlife Refuges
 - Wilderness
- USDA
 - Forest Service Special Interest Management Areas
 - Wilderness ALPS/WSA
 - Wild and Scenic Rivers
- BLM
 - Outstanding Natural Areas
 - Wild and Scenic Rivers
 - Wilderness Areas
 - Wilderness Study Areas

State

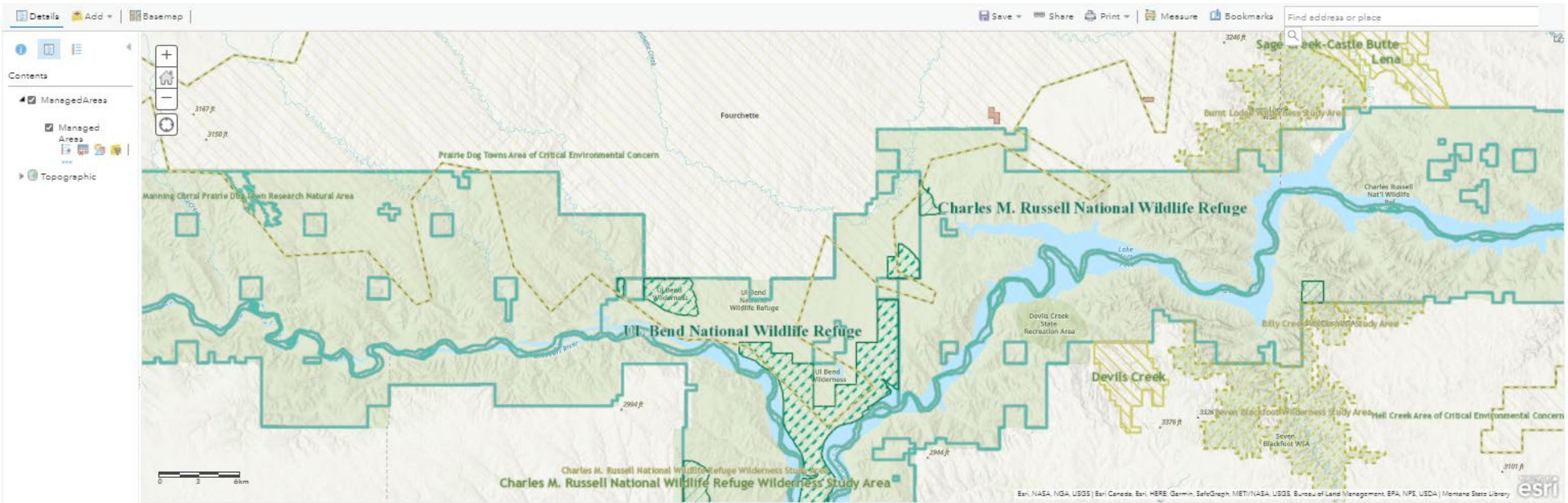
- MT-DNRC State Forest
- MTFWP
 - State Parks
 - Wildlife Management Areas
 - Fishing Access Sites

Tribal

- Reservations
- Tribal Lands

Private

- The Nature Conservancy (TNC) Fee Management Units



ManagedAreas - Managed Areas (Features: 1216, Selected: 0)

MA_ID	MA_TYPE	MANAME	UNITTYPE	MANAGER	INSTTYPE	INST	ACRES	DataSource	SourceDate	URL	EditDate	SourceName	GAP Status Code
888.00	SFPFS	Alkali Creek Fishing Access Site	Fishing Access Site	Montana Fish, Wildlife & Parks, Region 6	State	Montana Fish, Wildlife & Parks	1.75	MTFWP	9/20/2021, 6:00 PM	https://myfwp.mt.gov/fishMT/fas/39754259	9/23/2021, 6:00 PM	Alkali Creek	4 - no known mandate for biodiversity protection
889.00	SFPFS	Bailey Reservoir Fishing Access Site	Fishing Access Site	Montana Fish, Wildlife & Parks, Region 6	State	Montana Fish, Wildlife & Parks	106.65	MTFWP	9/20/2021, 6:00 PM	https://myfwp.mt.gov/fishMT/fas/39754692	9/23/2021, 6:00 PM	Bailey Reservoir	4 - no known mandate for biodiversity protection
890.00	SFPFS	Black Bridge Fishing Access Site	Fishing Access Site	Montana Fish, Wildlife & Parks, Region 7	State	Montana Fish, Wildlife & Parks	79.40	MTFWP	9/20/2021, 6:00 PM	https://myfwp.mt.gov/fishMT/fas/39754623	9/23/2021, 6:00 PM	Black Bridge	4 - no known mandate for biodiversity protection
891.00	SFPFS	Bull Pasture Fishing Access Site	Fishing Access Site	Montana Fish, Wildlife & Parks, Region 4	State	Montana Fish, Wildlife & Parks	1.21	MTFWP	9/20/2021, 6:00 PM	https://myfwp.mt.gov/fishMT/fas/39754658	9/23/2021, 6:00 PM	Bull Pasture	4 - no known mandate for biodiversity protection

Fields include: Managed Area Name, Type, Manager, Acres Data Source, Source Date, URL, Edit Date



Latest Updates

- All of the managed areas were reviewed and compared with the source datasets and updated in the database for download and for the web map service
- See the SourceDate field for date that source data was reviewed
- The files for download were reprojected to Montana State Plane NAD83 (2011) meters projection (WKID: 6514)
- GAP Status Code field was added from PAD-US

More Updates

- US Forest Service – Ranger District Name Changes
Name changes: Beaverhead-Deerlodge National Forest, Butte Ranger District (not Jefferson), Beaverhead-Deerlodge National Forest, Wisdom Ranger District now includes Wise River
- Bureau of Land Management
 - New Areas of Critical Environmental Concern (ACEC)
 - New Wilderness Study Areas: Beaver Meadows, Eighteen Mile
- Montana Fish, Wildlife, and Parks
Fishing Access Sites: Corwin Springs renamed Brogan's Landing; WW White Memorial FAS renamed C. Ben White Memorial FAS; New FAS: Selway Park
- Tribal
 - Bison Range now managed by CSKT (Formerly USFWS)
 - Safe Harbor Marsh Preserve now managed by CSKT (Formerly TNC)
 - Tribal Trust Land added
- Now Providing full boundaries for areas that extend outside of Montana (Yellowstone National Park)
- The Nature Conservancy Preserves are now Fee Management Units

Next Steps

- Work with USGS to update PAD-US
- How does USGS update the GAP Status Codes in PAD-US?
 - There is GAP Status Code reference document to help
 - In the absence of other information, USGS assigns GAP Status Codes categorically by Designation Type
 - USGS seeks partners to review and refine conservation measures by designation type, manager, or unit - Contact the PAD-US Team at pad-us@usgs.gov for more information.
 - The “GAP Code Source” field in the PAD-US provides a general classification method reference, for example:
 - ‘GAP - Default’ (categorical assignment by Designation Type, Table 12)
 - ‘GAP’ (Management plan review and assignment following dichotomous key in the reference document).
 - ‘TNC’
 - I’ll be adding this field to the Managed Areas database
 - PAD-US Version 3.0 coming soon...

<https://www.usgs.gov/core-science-systems/science-analytics-and-synthesis/gap/science/protected-areas>

For more information visit

<https://msl.mt.gov/GIS/Boundaries>

Thank you!

Meghan Burns

Montana State Library

mburns2@mt.gov

(406) – 444-1550

