

The New Address Count Listing Files

Jim Castagneri

U.S. Census Bureau



A New Development with Census Blocks

- The lack of detailed population counts available during the intercensal period has troubled data users since the introduction of TIGER in 1990.
- Aside from local efforts to track and record housing and population change using GIS, the Census Bureau now has a new dataset to assist in this effort.
- Called the ***Address Count Listing Files***, these data represent the latest tabulation available of housing units by census block and are updated bi-annually.
- More information on these files and how to download them can be found here:

<https://www.census.gov/geographies/reference-files/2023/geo/addcountlisting.html>

Address Count Listing Files

- The files are updated biannually and include total housing units (including transitory locations) and total group quarters counts as of October 2022, by *current* tabulation block.
- These files are created for all 50 States, Washington, DC, Puerto Rico, and Island Areas
- The files are pipe-delimited and are named using the following convention:<stcode>_<name>_AddressBlockCountList_<mm><yyyy>.txt, *For example:*

44_RhodeIsland_AddressBlockCountList_122022.txt

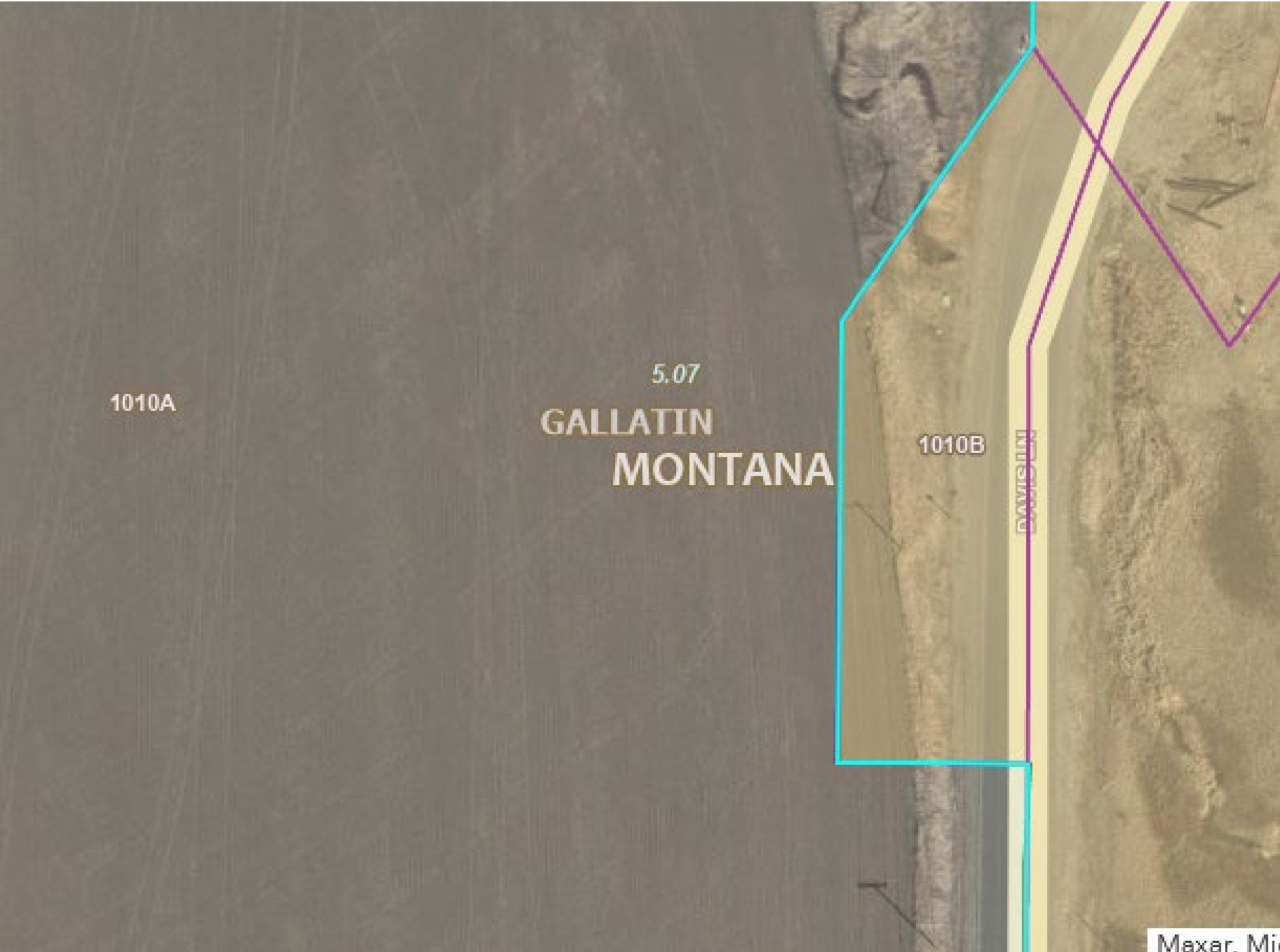
Record Layout

Field Name	Field Description
STATE	Two-digit state FIPS code
COUNTY	Three-digit county FIPS code
TRACT	The census tract number consists of six digits with an implied decimal between the fourth and fifth digits corresponding to the basic census tract number but with leading zeroes and trailing zeroes for census tracts without a suffix.
BLOCK	Four-digit census block number. Census blocks are numbered uniquely from 0000 to 9999 within census tract, which nest within state and county. The first digit of the census block number identifies the block group.
BLOCK_GEOID	Concatenation of STATE, COUNTY, TRACT, and BLOCK fields, described above, for use in joining the census block-level feedback data to the census blocks in the partnership shapefiles.
TOTAL HOUSING UNITS	Total number of addresses in the entity count list identified as housing units or transitory units by data in the Master Address File (MAF).
TOTAL GROUP QUARTERS	Total number of addresses in the entity count list identified as group quarters by data in the MAF.

For mapping, they need a special TIGER/Line

- TIGER/Line Partnership shapefiles are special-purpose and issued every year for our Boundary and Annexation Survey (BAS) and other partnership efforts. They reflect the ***block splits*** necessary to join the revised counts to a geography.
- The files can be downloaded from here:

<https://www.census.gov/geographies/mapping-files/time-series/geo/partnership.html>



1010A

5.07

GALLATIN
MONTANA

1010B

DAVIS HILL

Maxar. Mi

Block Counts can be viewed with our Online Viewer

- <https://mtgis-portal.geo.census.gov/arcgis/apps/webappviewer/index.html?id=c754be823d6342949a4c50e519eb87be>

Comments & Questions

Jim Castagneri

james.d.Castagneri@census.gov