

RECORDER'S PLAT

COUNTY OF PARK

STATE OF MONTANA

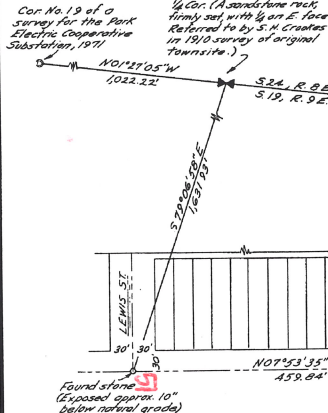
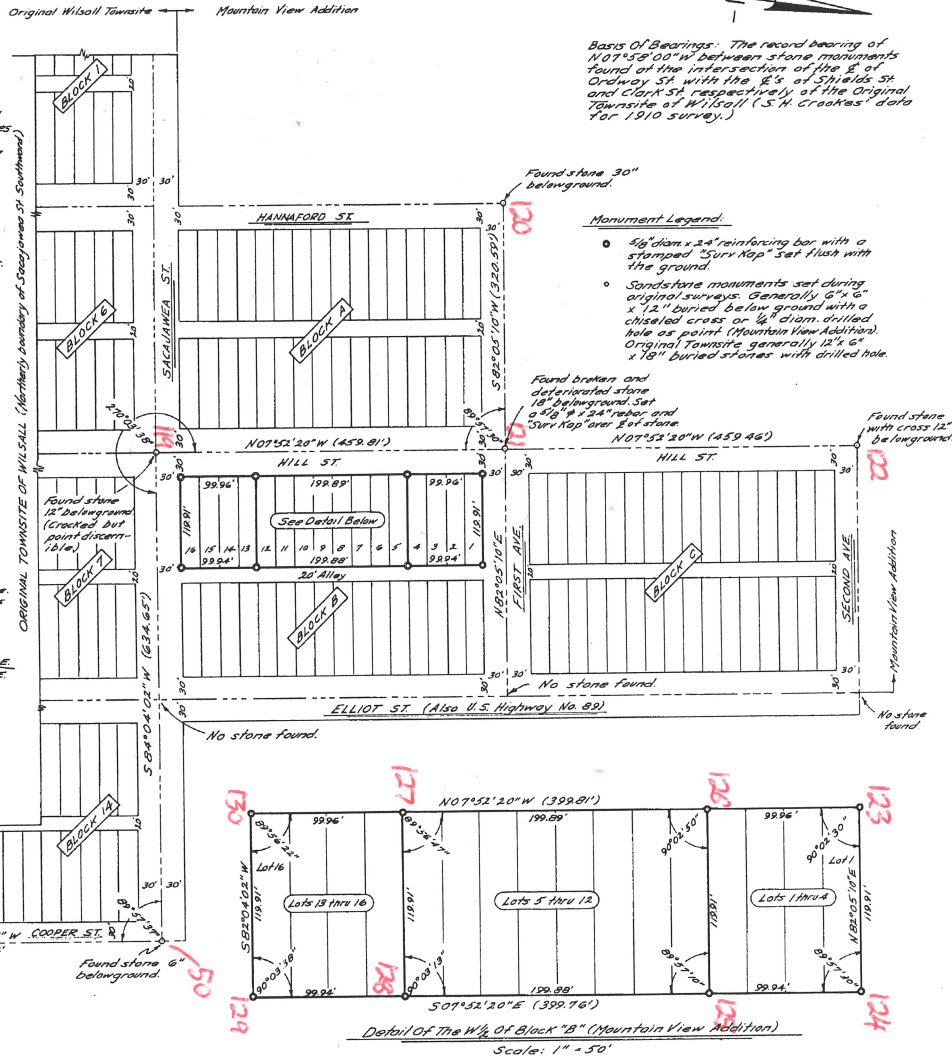
Method Of Procedure:

- 1) Stones set of street intersections during the survey of the Original Townsite in 1910 and the Mountain View Addition in 1912 were found as shown hereon.
- 2) The dimensions of the $\frac{1}{2}$ of Block "B" were arrived at by giving record distances to streets and alleys between known original monuments and then prizing the difference between actual and record measurements equally among the respective lots.
- 3) As no original monuments were found in Elliot St., the right line was arrived at by projecting east, westerly the alignment between the stones found at the intersection of 1st Ave. with Hannaford and Hill Streets. The easterly boundary was made parallel with the westerly boundary as no evidence of block corners could be found.

Basis Of Bearings: The record bearing of $N 07^{\circ} 52' 20'' W$ between stone monuments found at the intersection of the E. of Ordway St with the E. of Shields St. and Clark St. respectively at the Original Townsite of Wilsall (S.M. Crook's data for 1910 survey.)

Monument Legend:

- $\frac{3}{8}$ " diam x 24" reinforcing bar with a stamped "Surr Kap" set flush with the ground.
- Sandstone monuments set during original survey. Generally $5\frac{1}{2}'' \times 12''$ buried below ground with a chiseled cross or $\frac{3}{8}$ " diam drilled hole as point (Mountain View Addition). Original Townsite generally $12\frac{1}{2}'' \times 18''$ buried stones with drilled hole.



Detail of The $\frac{1}{2}$ of Block "B" (Mountain View Addition)
Scale: 1" = 50'

A Resurvey Of
THE $\frac{1}{2}$ OF BLOCK "B" (LOTS 1-16) OF THE MOUNTAIN VIEW ADDITION TO THE TOWNSITE OF WILLSALL

Section 19, Township 3 North, Range 9 East, M.P.M.,
Park County, Montana

Scale: 1" = 100'

Prepared For:
Mrs. Lois Inhis
P.O. Box 17
Wilsall, Montana 59086

CERTIFICATE OF THE COUNTY CLERK AND RECORDER

Filed in the Office of the Clerk and Recorder for the County of Park, State of Montana this 12 day of October, 1972, A.D., at 27 minutes past 8 o'clock a.m.

Margaret Monical
County Clerk and Recorder
By: _____
Deputy

Document No. 125745
Plat Book No. 639
Page 20

CERTIFICATE OF APPROVAL BY THE BOARD OF COUNTY COMMISSIONERS

I, Raymond Storchell, Chairman of the Board of County Commissioners, County of Park, State of Montana, hereby certify that we have examined the accompanying plat, and whereas we find it to conform to the requirements applicable to the platting of tracts of land, we hereby approve the original and duplicate thereof.
Dated this 3 day of Oct, 1972, A.D.

Attest:
Raymond Storchell
Chairman
Board of County Commissioners
County of Park, State of Montana

Margaret Monical
Clerk and Recorder

SANITARY RESTRICTIONS

CERTIFICATE OF SURVEY

State of Montana) s.s.
County of Park)
I, Thomas J. Hallin, a Professional Engineer and Land Surveyor, hereby certify that I have compiled the accompanying Recorder's Plat from data on record and information obtained during a survey made by me beginning July 18, 1972, and completed July 19, 1972 and that to the best of my knowledge, the survey is true and complete as shown, that all stakes, monuments and marks set together with those found, are of the character indicated and occupy the positions shown hereon, and are sufficient to enable the survey to be retraced.
IN WITNESS WHEREOF, I have hereunto set my hand and affixed my official seal this 7th day of September, 1972, A.D.

Thomas J. Hallin
Thomas J. Hallin, P.E.
Certificate of Registration
Montana No. 28763



Drawn By: Hallin, T.J.
Date: 9-3-72

Sheet 1 of 1

657 639