

Removed (10-20-71)
Sanitary Restrictions

28

PLAT

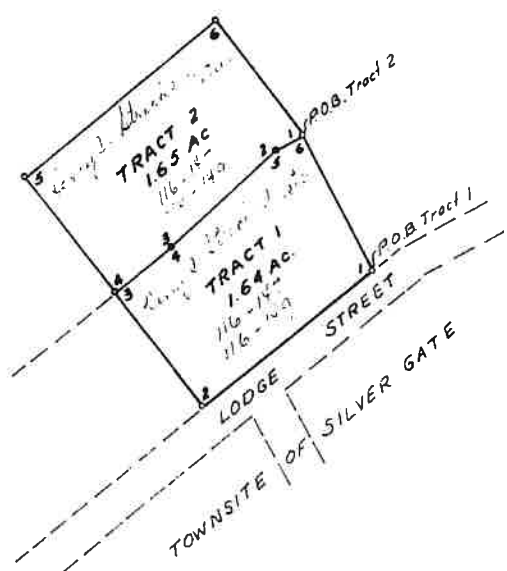
TRACTS OF LAND IN THE SW $\frac{1}{4}$ NE $\frac{1}{4}$ OF
SEC 33, T 9 S, R 14 E, P.M.M.

(See letter dated (10-5-71)
on Sanitary Restrictions
annexed

SCALE 1" = 200'

SURVEYED AT THE REQUEST OF HENRY STRECKER TO OBTAIN
CORRECTED DESCRIPTIONS FOR DEED.

10th day of
Sept. A.D. 1971
Margaret Driscoll
County Clerk and Recorder.
Deputy



APPROVED THIS 2nd day of Sept. 1971
Chairman of Board
Margaret Driscoll
Attest

SMALL CIRCLE INDICATES POINT MARKED WITH 1 1/2" ALUMINUM CAP

DESCRIPTION OF SURVEY - TRACT 1

BEGINNING AT A POINT ON THE NORTHERLY SIDE OF LODGE STREET
FROM WHICH THE SOUTH $\frac{1}{4}$ CORNER OF SECTION 33, T 9 S, R 14 E,
P.M.M. LIES S 21° 25' 52" W A DISTANCE OF 1548.23 FEET, THENCE:

COURSE	BEARING	DISTANCE
1-2	S 51° 30' W	313.05 FEET
2-3	N 38° 30' W	208.7 "
3-4	N 51° 30' E	104.35 "
4-5	N 47° 26' 35" E	205.31 "
5-6	N 62° 15' E	45.0 "
6-1	S 27° 45' E	218.7 " TO THE

POINT OF BEGINNING AND CONTAINING 1.54 ACRES, AS SURVEYED AND
MONUMENTED ACCORDING TO THE ANNEXED PLAT.

DESCRIPTION OF SURVEY - TRACT 2

BEGINNING AT A POINT FROM WHICH THE SOUTH $\frac{1}{4}$ CORNER OF SECTION
33, T 9 S, R 14 E, P.M.M. LIES S 15° 50' 32" W A DISTANCE OF
1699.7 FEET, THENCE:

COURSE	BEARING	DISTANCE
1-2	S 62° 15' W	45.0 FEET
2-3	S 47° 26' 35" W	205.81 "
3-4	S 51° 30' W	104.35 "
4-5	N 38° 30' W	208.7 "
5-6	N 51° 30' E	350.83 "
6-1	S 38° 30' E	202.49 " TO THE

POINT OF BEGINNING AND CONTAINING 1.65 AS SURVEYED AND MONUMENTED
ACCORDING TO THE ANNEXED PLAT.

STATE OF MONTANA)
COUNTY OF PARK) SS.



I, RONALD A. WATTERS, REGISTERED LAND SURVEYOR, CERTIFICATE
OF REGISTRATION No. 9988, DO HEREBY CERTIFY THAT ON JUNE 15, 1971,
I COMPLETED THE SURVEY OF THE TRACTS OF LAND DESCRIBED ON THE
ACCOMPANYING PLAT AND THAT SAID PLAT CORRECTLY SHOWS THE POSITION
OF SAID TRACTS ON THE GROUND TOGETHER WITH THE COURSES AND DISTANCES
OF THE BOUNDARIES THEREOF.

DATED THIS 23TH DAY OF AUGUST, 1971.

Ronald A. Watters

Plat # 594