

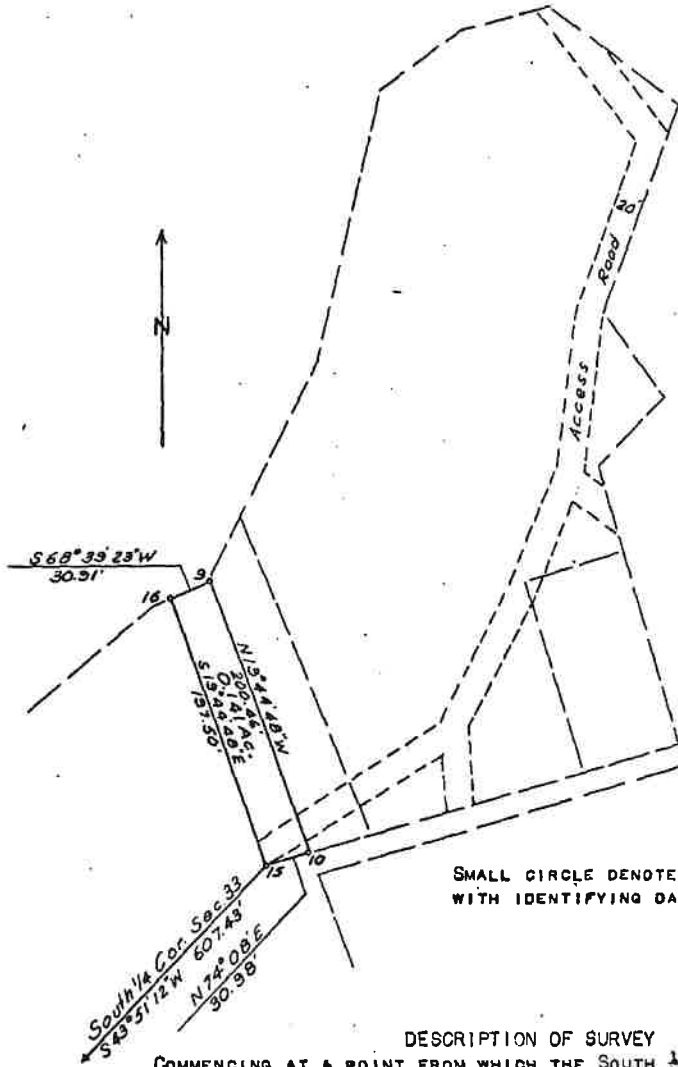
PLAT

A TRACT OF LAND IN LOT 2,
SEC 33, T 9 S, R 14 E, P.M.M.

SCALE 1" = 100'

SURVEYED FOR ELMER LARSON

HABIS OF BEARINGS IS S 89° 51' 08" E ALONG THE SOUTH LINE OF SECTION 33,
T 9 S, R 14 E, P.M.M., ACCORDING TO MAP No. 432A ON FILE IN THE OFFICE
OF THE CLERK AND RECORDER OF PARK COUNTY.



125145

Filed (Date) 4th day of

August a.d. 1972

4:15 p.m.

Marquet Moncell

County Clerk and Recorder.

Betty Jane Lee

Chief Deputy.

1 Lit. = .50¢

Subject to Sanitary Restriction

Clk. Raymond Churchill

Bo. of County Commissioners

Park County

Livingston, Montana 59047

Aug 4 1972

**SUBJECT TO
SANITARY RESTRICTIONS**

SMALL CIRCLE DENOTES 1 1/2" SURVKAP STAMPED
WITH IDENTIFYING DATA.

DESCRIPTION OF SURVEY

COMMENCING AT A POINT FROM WHICH THE SOUTH 1/4 CORNER OF SECTION 33,
T 9 S, R 14 E, P.M.M. LIES S 43° 51' 12" N 607.43 FEET, THENCE
N 74° 08' E 30.98 FEET, THENCE N 19° 44' 48" W 200.46 FEET, THENCE
S 68° 39' 23" W 30.91 FEET, THENCE S 19° 44' 48" E 197.50 FEET TO THE
POINT OF BEGINNING AND CONTAINING 0.141 ACRES AS SURVEYED AND
MONUMENTED ACCORDING TO THE ANNEXED PLAT.

STATE OF MONTANA)
COUNTY OF PARK) ss.

I, RONALD A. WATTERS, REGISTERED LAND SURVEYOR, CERTIFICATE
OF REGISTRATION No. 998S, DO HEREBY CERTIFY THAT ON OCTOBER 14,
1971, I COMPLETED THE SURVEY OF THE TRACT OF LAND DESCRIBED ON THE
ACCOMPANYING PLAT AND THAT SAID PLAT CORRECTLY SHOWS THE POSITION
OF SAID TRACT ON THE GROUND TOGETHER WITH THE COURSES AND DISTANCES
OF THE BOUNDARIES THEREOF.

DATED THIS 19TH DAY OF JANUARY, 1972.

Ronald A. Watters
RONALD A. WATTERS, LAND SURVEYOR

Plat # 628