

**CERTIFIED LAND CORNER RECORDATION**

**DESCRIPTION OF CORNER EVIDENCE FOUND, AND ORIGINAL RECORD (IF KNOWN)**

Original Record: Set a sandstone 16x10x5 in 11 ins. in to ground for cor. to sec. 23, 24, 25, 26 marked with 1 notch on east and 2 on south edges.

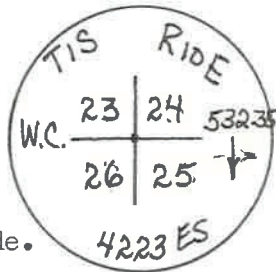
Corner evidence found: No original stone found. Present location of corner believed to be near south edge of Yellowstone River.

Corner location determined from 1886 original government survey ties.

**DESCRIPTION OF MONUMENT AND ACCESSORIES ESTABLISHED TO PERPETUATE THE ORIGINAL LOCATION OF THIS CORNER:**

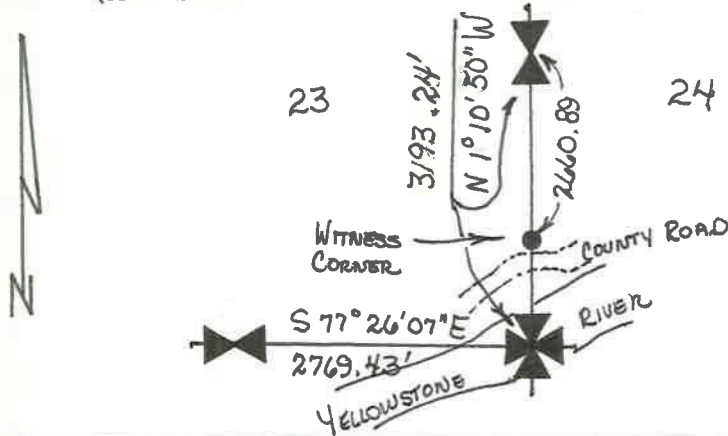
Set a 2" galvanized iron pipe with 2½" brass cap as a witness corner, marked as follows:

Date of work: October 1980



Placed pipe 0.3' above grade.  
Stacked rock around pipe.

**SKETCH, WITH COURSE AND DISTANCE TO ADJACENT CORNERS IF DETERMINED IN THIS SURVEY. (MAY SKETCH OR PASTE REPRODUCTION ON REVERSE SIDE.)**



Surveyor's Seal



I, Virginia R. Gorton  
certify that the information shown herein is true and correct.

Virginia R. Gorton  
Signature of Ground Party Chief

I, Edward L. Gorton  
certify that I have carefully performed or reviewed the work done on the diagrammed corner as reported on this recordation form and approve the same.

Edward L. Gorton  
Signature of Surveyor

DIAGRAM OF CORNER:

N. T. 1 S., R. 10 E.



= Corner recorded on the sheet

4223 Es  
Registration Number

**163455**

Office of Clerk and Recorder, County of Park

This "corner record" was filed for record on the 18 day of December 1980, was noted on the cross-index plat and is assigned page No. 61, in book No. one

Margaret Monreal  
County Official