

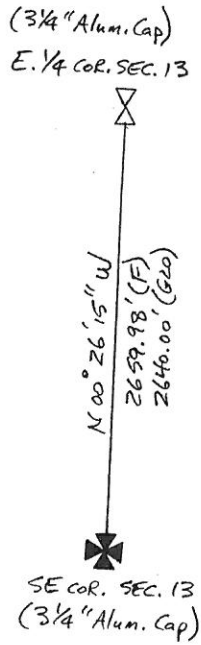
2. Description of evidence found, note discrepancies in the record, state method establishing lost or obliterated corners.
3. Description of monument and accessories set to perpetuate the corner position.
4. Sketch or plan, show all pertinent data which can best be shown in a sketch example, corner marking, topography lines, position of accessories, etc.
5. Certification must be signed and sealed by Registered Land Surveyor in State of Montana.
6. Fill in Cross Index & Section Diagram at bottom of sheet.

## CERTIFIED CORNER RECORDATION

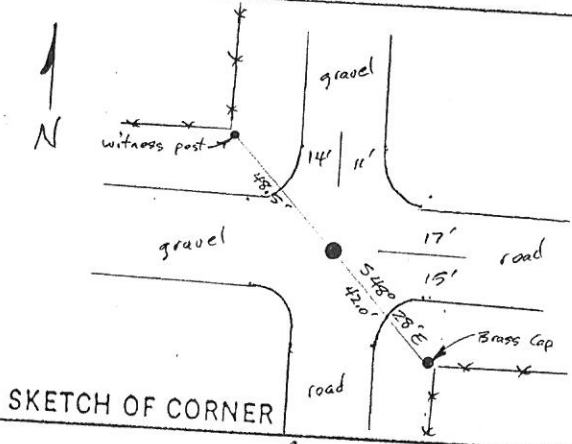
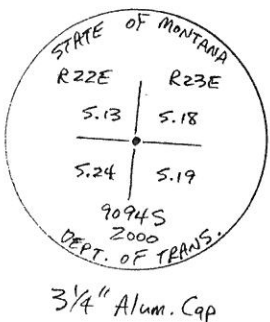
Corner SE Corner Section 13 T. 32N R. 22E P.M.M. Blaine County

1. '1890' GLO - Set a post 4 ft. long, 4 ins. square with marked stone 12 ins. in the ground for cor. to secs. 13, 18, 19 and 24 marked T32N S18 on N.E., R23E S. 19 on S.E., R22E S.24 on S.W., and S. 13 on N.W. faces with 3 notches on N. and S. edges, dug pits 18x18x12 ins. in each sec., 5-1/2 ft. dist. and raised a mound of earth alongside.
2. No original evidence found. I found and accepted a nail of unknown origin in center of gravel road intersection.
3. Set a MDOH pipe with a 3-1/4" aluminum cap 6" deep in gravel road intersection. Set a witness post along fence corner which bears N 48° 28' W, 48.5'. A found brass cap monument set along fence corner bears S 48° 28' E, 42.0'.

STATE OF MONTANA BLAINE COUNTY  
 RECORDED: 08/22/2001 8:00 BOOK: 50 MISCBOOK PAGE: 739 DOC #: 332283  
 SANDRA L. BOARDMAN CLERK AND RECORDER BY: Lauree Sue Riggs FEE: \$0.00  
 THOMAS, DEAN & HOSKINS, INC. 1200 25TH STREET SOUTH, GREAT FALLS, MT 59405



ENTERED LSD  
 DIRECT   
 INDIRECT



CERTIFICATION

I, Robert F. Stangler  
 certify the information shown herein is true and correct.

Robert F. Stangler  
 Signature Ground Rights Officer

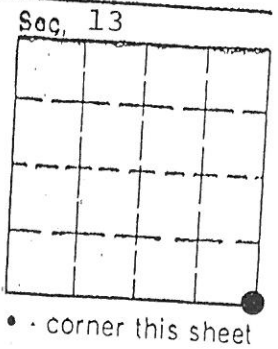
I, Robert F. Stangler  
 certify that this Corner Record correctly represents work performed by me or under my direction in compliance with the "Corner Recordation Act" (70-22-101, et seq., M.D.A.)

Robert F. Stangler  
 Signature of Surveyor

Date: 10/19/00 Reg. No. 9094S  
 Employer: TD&H, Inc.

Office of Clerk and Recorder, County of Blaine, This "corner record" was filed for record on the August 23, 2001 @ 8:00 a.m. day of 1901, was noted on the cross-index plat and is assigned page No. 739, in book No. 50 Misc

Lauree Sue Riggs  
 County Official



Doc # 332283

Cross Index No. N-25 T. 32N R. 22E P.M.M.