

- INSTRUCTIONS
1. Original and/or subsequent record used to evaluate the corner position.
  2. Description of evidence found, note discrepancies in the record, state method of establishing lost or obliterated corners.
  3. Description of monument and accessories set to perpetuate the corner position.
  4. Sketch or corner, show all pertinent data which can best be shown in a sketch example, corner marking, topography lines, position of accessories, etc.
  5. Certification must be signed and sealed by Registered Land Surveyor in State of Montana.
  6. Fill in Cross Index & Section Diagram at bottom of sheet.

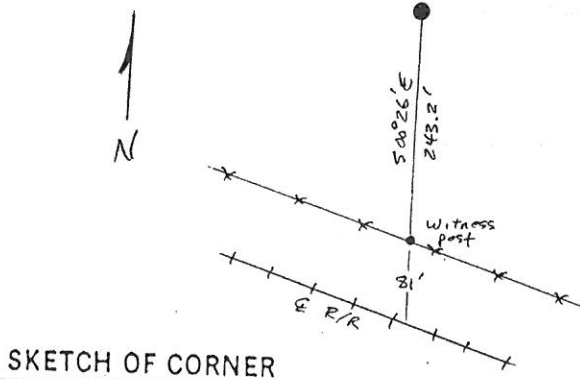
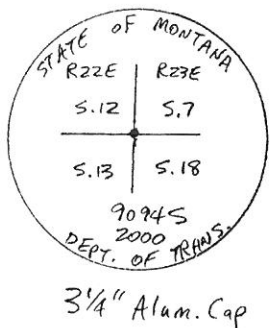
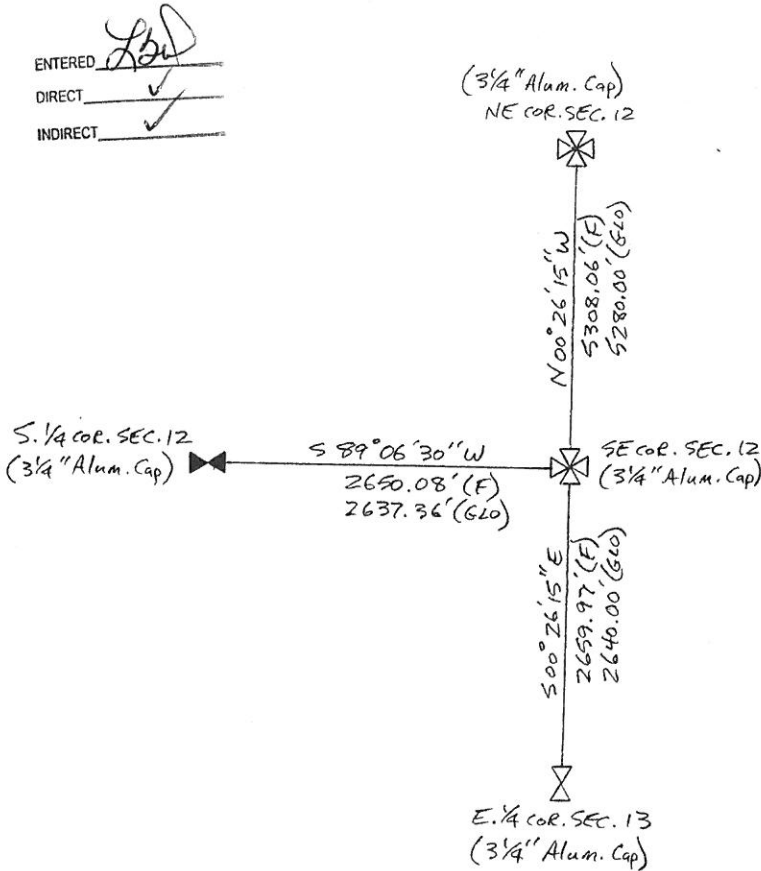
## CERTIFIED CORNER RECORDATION

Corner SE Corner Section 12 T. 32N R. 22E P.M.M. Blaine County

DOC #: 332288  
 FEE: \$0.00  
 59405

RECORDED: 08/22/2001 8:00 BOOK: 50 MISCBOK PAGE: 744  
 SANDRA L. BOARDMAN CLERK AND RECORDER BY: Laurie Sue Riggs  
 THOMAS, DEAN & HOSKINS, INC. 1200 25TH STREET SOUTH, GREAT FALLS, MT 59405

- 1) '1890' GLO - Set a post 4 ft. long, 4 ins. square with marked stone 12 ins. in the ground for cor. to secs. 7, 12, 13 and 18 marked T32N S.7 on N.E., R23E S.18 on S.E., R22E S.13 on S.W., and S.12 on N.W. faces, with 2 notches on N. and 4 notches on S. edges, dut pits 18x18x12 ins. in each sec., 5-1/2 ft. dist. and raised a mound of earth around post.
- 2) No original or subsequent evidence found. Corner falls in a hay field. I established the position of this corner by intersecting the south line of section 12 shown on COS #302402 with the range line having corners North and South.
- 3) Set a MDOH pipe with a 3-1/4" aluminum cap 9" deep in hayfield and a post alongside. Set a witness post in north railroad R/W fence which bears S0°26'E, 243.2'.



CERTIFICATION

1. Robert F. Stangler  
 certify the information shown herein is true and correct.

Robert F. Stangler  
 Signature Ground Party, Client

1. Robert F. Stangler  
 certify that this Corner Record correctly represents work performed by me or under my direction in compliance with the "Corner Recordation Act" (70-22-101, et seq., M.C.A.)

Robert F. Stangler  
 Signature of Surveyor & Seal

Date: 10/19/00 Reg. No. 9094S

Employer: TD&H, Inc.

Office of Clerk and Recorder, County of Blaine, This "corner record" was filed for record on the August 22, 2001 @ 8:00 a.m. day of 1901, was noted on the cross-index plat and is assigned page No. 744, in book No. 50 Misc

Laurie Sue Riggs  
 County Official

Sec. 12


Cross Index No. J-25 T. 32N R. 22E P.M.M.

• corner this sheet

Doc # 332288