

LSA

CERTIFIED CORNER RECORDATION

Corner W 1/4 SECTION 17 T. 32N R. 23E P.M.M. BLAINE County

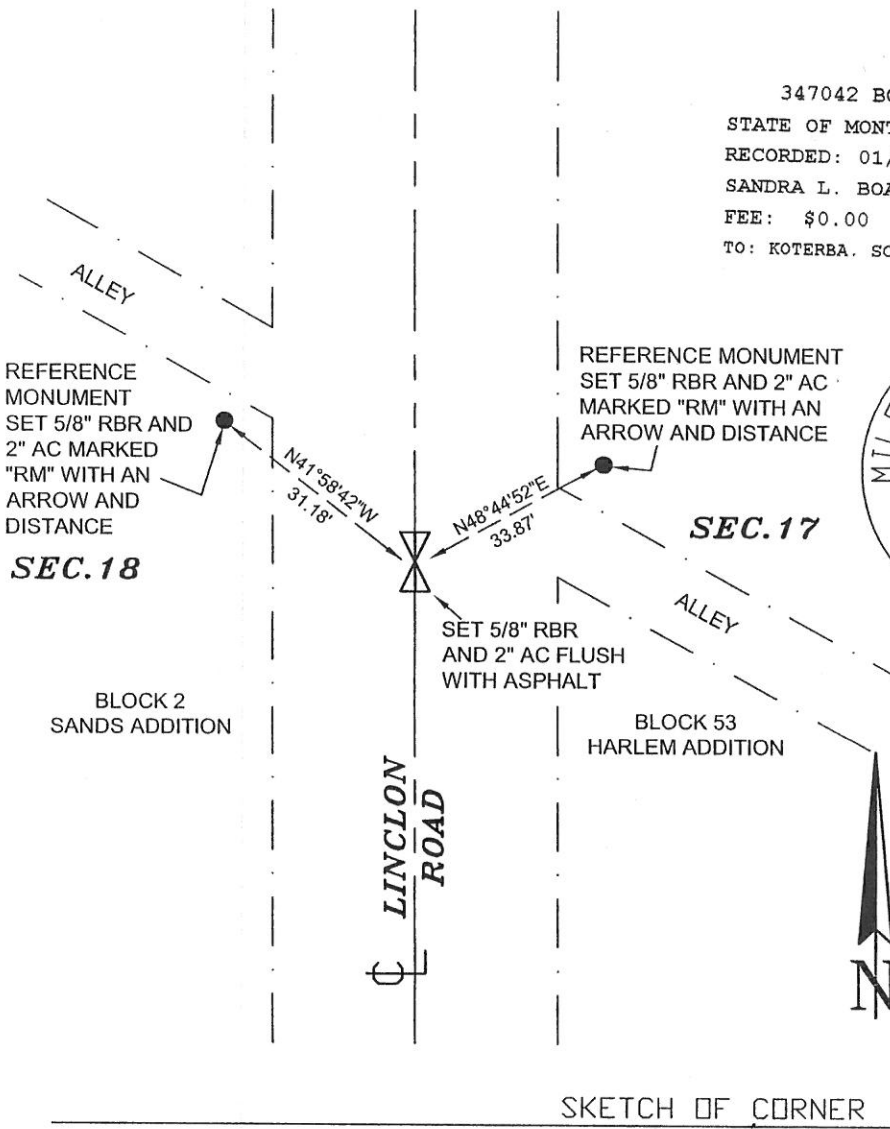
ORIGINAL RECORD: (GLO - 1890, Page) Set a limestone 14 x 8 x 6 ins. 10 ins. in the ground for 1/4 sec. cor., marked 1/4 W. face; dug pits 18 x 18 x 12 ins. N. and S. of stone, 5 1/2 dist. and raised a mound of earth 1 1/2 ft. high, 3 1/2 ft. base alongside.

SUBSEQUENT RECORD: (Sands Addition-1899, Barton Addition-1904, Plat of Blocks 1 & 2 Sands Addition-1956 and RR maps) Numerous Addition maps and RR maps show ties to this corner although it is unclear what it is.

EVIDENCE FOUND: (August, 2007) No original evidence was found or other monuments per the subsequent records.

PERPETUATION: (August, 2007) Held a computed position per intersection monuments found at Central and South Avenue with Mitchell Street and Sands Street. This position also fits very well with a tie to the centerline of the railroad. At this position, set a 5/8" rebar and 2" aluminum cap, marked as shown, flush with the pavement. Set references as shown below.

SEE ASSOCIATED CERTIFICATE OF SURVEY - SEC. 8, T.32N. R.23E.



347042 BOOK: 52 MISCBOOK PAGE: 883 Pages: 1
 STATE OF MONTANA BLAINE COUNTY
 RECORDED: 01/24/2008 2:00 KOI: COR/REC
 SANDRA L. BOARDMAN CLERK AND RECORDER
 FEE: \$0.00 BY: *Shirley Sue Riggs*
 TO: KOTERBA, SCOTT C. 324 DARBY AVE., LEWISTOWN, MT 59457



07-820

CERTIFICATION

I, _____
 certify the information shown herein is true and correct.

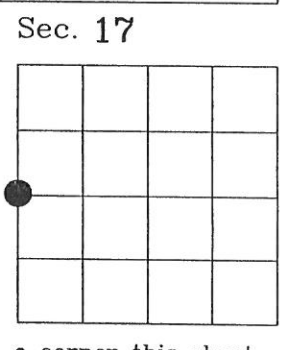
 Signature Ground Party Chief

I, Scott C. Koterba
 certify that this Corner Record correctly represents work performed by me or under my direction in compliance with the "Corner Recordation Act" (70-22-101, et seq., M.C.A.)

Scott C. Koterba
 Signature of Surveyor & Seal

Date: 1/23/08 Reg. No. 10801 LS
 Employer: Milestone Surveying

Office of Clerk and Recorder, County of Blaine. This "corner record" was filed for record on January 24, 2008 @ 2:00 P.M. was noted on the cross-index plat and is assigned page No. 883, in book No. 52 Misc County Official Shirley Sue Riggs



• corner this sheet

347042

Cross Index No. L-5 T. 32N R. 23E P.M.M.

Adopted July 1, 1981, Montana Board of Professional Engineers & Land Surveyors

pt # 30

1309' 320' ROP PWS