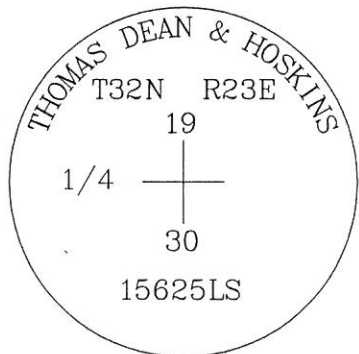
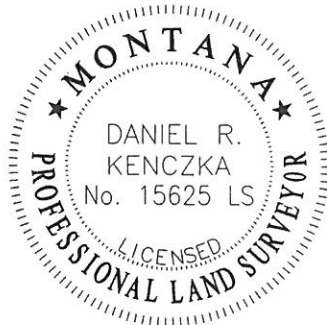
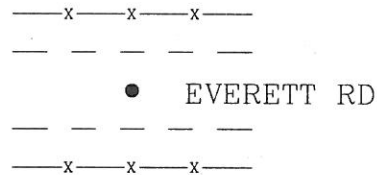
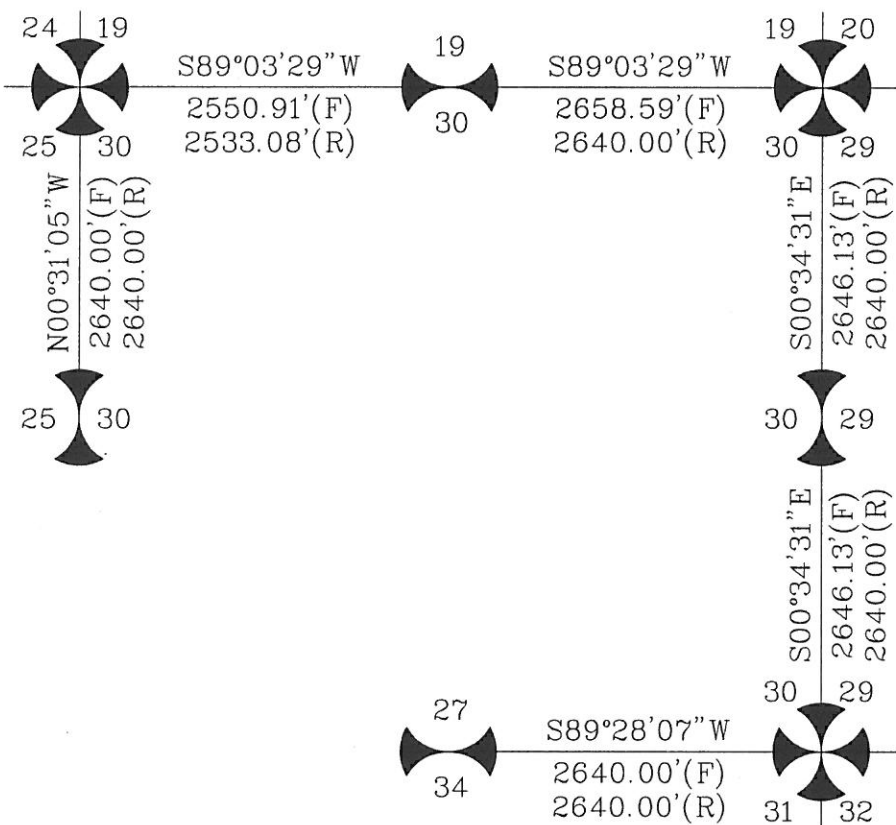


CERTIFIED CORNER RECORDATION

Corner N1/4 CORNER SECTION 30 T. 32N R. 23E P.M.M. BLAINE County

- 1) GLO - ORIGINAL SURVEY 1891, FRACTIONAL SECTION
- 2) ORIGINAL CORNER NOT FOUND. LOCATION FELL IN COUNTY GRAVEL ROAD. NO OTHER EVIDENCE OF CORNER FOUND.
- 3) ESTABLISHED CORNER LOCATION BY SINGLE PROPORTION.
- 4) SET A 5/8"x24" REBAR WITH A 2" ALUM CAP, BURIED 0.5' BELOW GRAVEL ROAD SURFACE.



SKETCH OF CORNER

CERTIFICATION

I, _____
 certify the information shown herein is true and correct.

Signature Ground Party Chief
DANIEL R. KENCZKA

I, _____
 certify that this Corner Record correctly represents work performed by me or under my direction in compliance with the "Corner Recordation Act" (70-22-101, et seq., M.C.A.)

Daniel R. Kenczka
 Signature of Surveyor & Seal

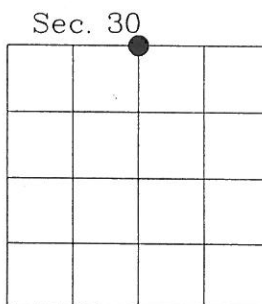
Date: 11-5-10 Reg. No. 15625LS
 Employer: THOMAS, DEAN, & HOSKINS

Office of Clerk and Recorder, County of Blaine. This "corner record" was filed for record on November 8, 2010 @ 9:05 a.m. was noted on the cross-index plat and is assigned page No. 418, in book No. 54 Misc by Lauree Sue Rigg County Official

352691

Cross Index No. R-3 T. 32N R. 23E PMM

Adopted July 1, 1981, Montana Board of Professional Engineers & Land Surveyors



PH#306