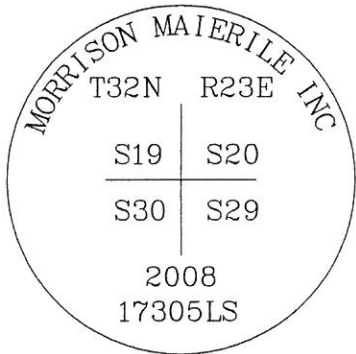
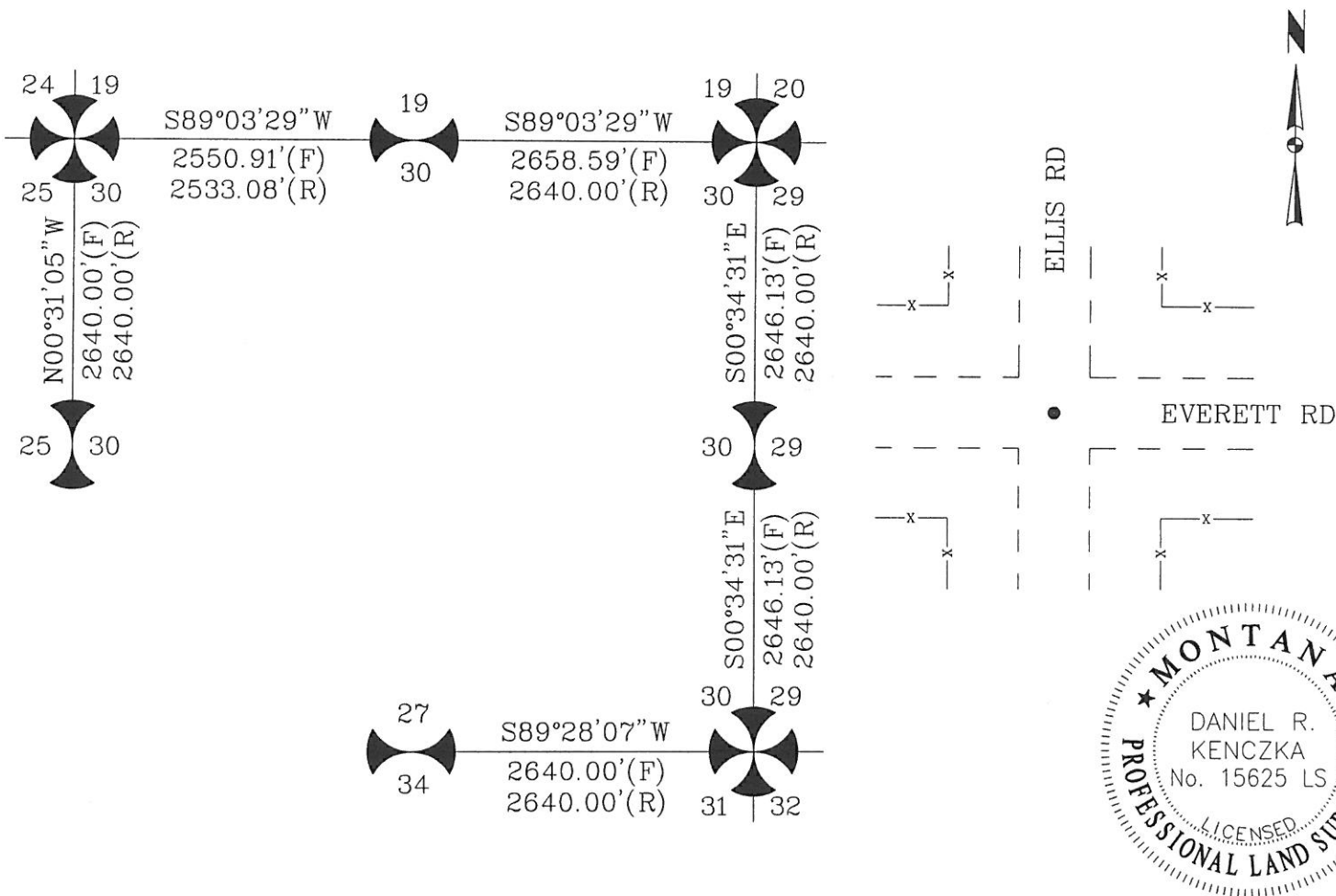


CERTIFIED CORNER RECORDATION

Corner NE CORNER SECTION 30 T. 32N R. 23E P.M.M. BLAINE County

- 1) GLO - ORIGINAL SURVEY 1891, FRACTIONAL SECTION
- 2) ORIGINAL CORNER NOT FOUND. LOCATION FELL IN THE INTERSECTION OF TWO COUNTY ROADS.
- 3) FOUND 2" ALUM CAP & 5/8" REBAR BURIED 0.5' BELOW SURFACE OF GRAVEL ROAD.



SKETCH OF CORNER

CERTIFICATION

I, _____
 certify the information shown herein is true and correct.

Signature Ground Party Chief
DANIEL R. KENCZKA

I, _____
 certify that this Corner Record correctly represents work performed by me or under my direction in compliance with the "Corner Recordation Act" (70-22-101, et seq., M.C.A.)

Daniel R. Kenczka
 Signature of Surveyor & Seal

Date: 11-5-10 Reg. No. 15625LS
 Employer: THOMAS, DEAN, & HOSKINS

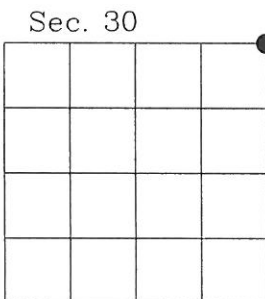
Office of Clerk and Recorder, County of Blaine. This "corner record" was filed for record on November 8, 2010 @ 9:05 a.m. was noted on the cross-index plat and is assigned page No. 420, in book No. 54 Misc

Lauree Sue Regg
 County Official

352693

Cross Index No. R-5 T. 32N R. 23E PMM

Adopted July 1, 1981, Montana Board of Professional Engineers & Land Surveyors



• corner this sheet

PT # 300