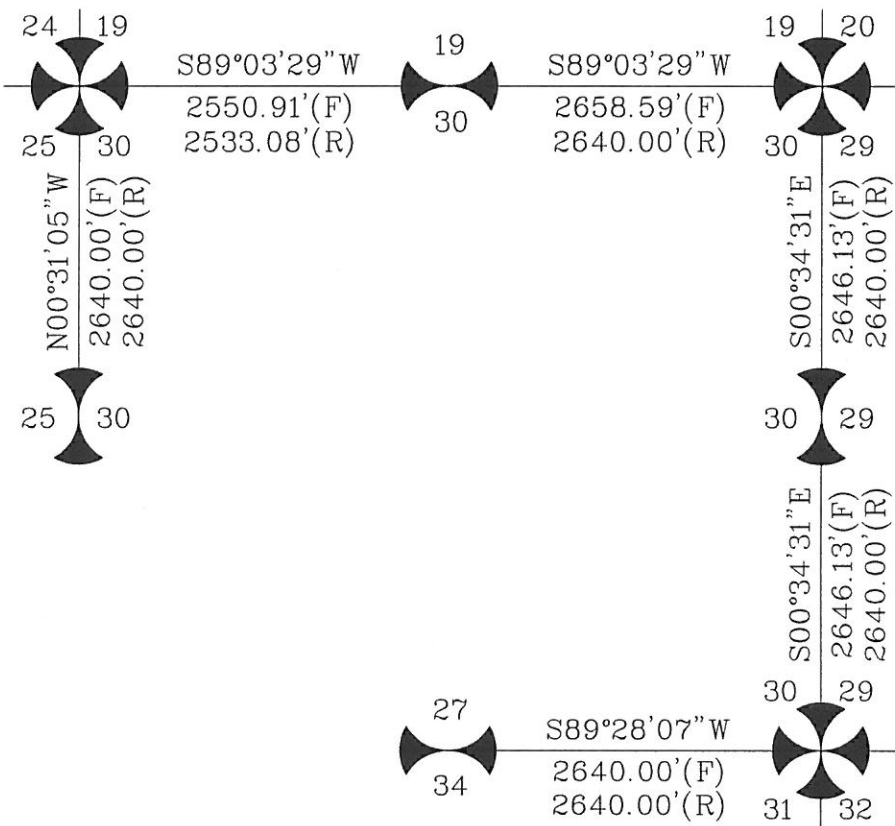


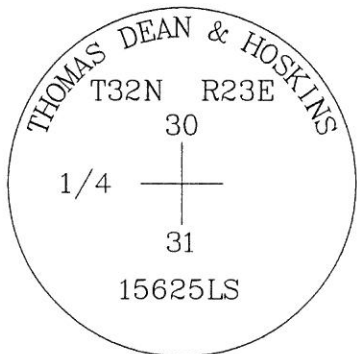
CERTIFIED CORNER RECORDATION

Corner S1/4 CORNER SECTION 30 T. 32N R. 23E P.M.M. BLAINE County

- 1) GLO - ORIGINAL SURVEY 1891, FRACTIONAL SECTION
- 2) ORIGINAL CORNER NOT FOUND. LOCATION FELL IN A CULTIVATED FIELD. NO OTHER EVIDENCE OF CORNER FOUND.
- 3) ESTABLISHED CORNER LOCATION BY RECORD BEARING & DISTANCE.
- 4) SET A 5/8"x24" REBAR WITH A 2" ALUM CAP, BURIED 0.5' BELOW SURFACE.



CORNER FELL IN A CULTIVATED FIELD



SKETCH OF CORNER

CERTIFICATION

I, _____
 certify the information shown herein is true and correct.

Signature Ground Party Chief

DANIEL R. KENCZKA

I, _____
 certify that this Corner Record correctly represents work performed by me or under my direction in compliance with the "Corner Recordation Act" (70-22-101, et seq., M.C.A.)

Daniel R. Kenczka
 Signature of Surveyor & Seal

Date: 11-5-10 Reg. No. 15625LS

Employer: THOMAS, DEAN, & HOSKINS

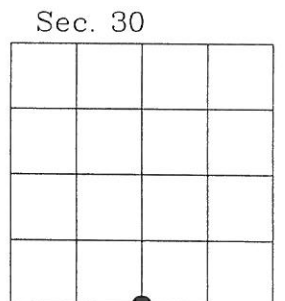
Office of Clerk and Recorder, County of Blaine. This "corner record" was filed for record on November 8, 2010 @ 9:05 a.m. was noted on the cross-index plat and is assigned page No. 432, in book No. 54 Misc

Laurie Sue Regg
 County Official

352695

Cross Index No. V-3 T. 32N R. 23E PMM

Adopted July 1, 1981, Montana Board of Professional Engineers & Land Surveyors



• corner this sheet

Plat # 307