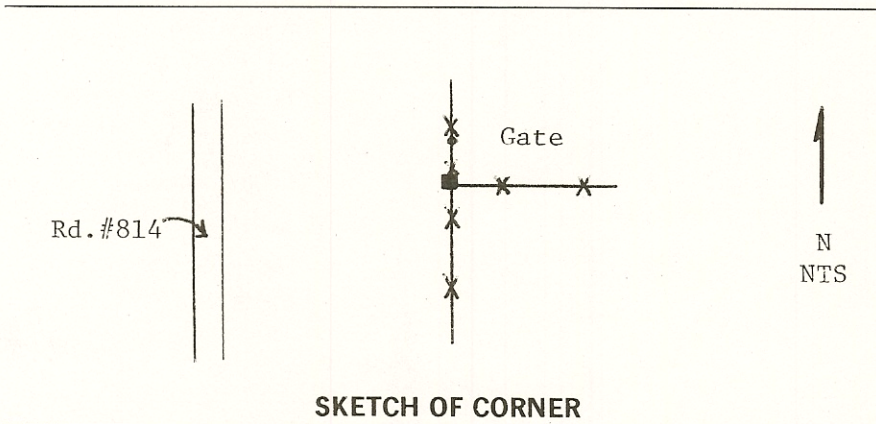
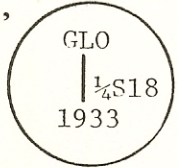


1. Original and/or subsequent record used to evaluate the corner position.
2. Description of evidence found, note discrepancies in the record, state method of establishing lost or obliterated corners.
3. Description of monument and accessories set to perpetuate the corner position.
4. Sketch of corner, show all pertinent data which can best be shown in a sketch example, corner marking, topography ties, position of accessories, etc.
5. Certification must be signed and sealed by Land Surveyor registered in the State of Montana.
6. Fill in Cross Index & Section Diagram at bottom of sheet.

CERTIFIED CORNER RECORDATION

Corner W¹/₄ Section 18 T. 1N R. 58E P.M.M. Carter County

1. 1889 (Scheetz) Set a sandstone, 18" x 12" x 6", 12" in the ground for $\frac{1}{4}$ section corner marked $\frac{1}{4}$ on west face and raised a mound of stone alongside.
1933 (Bandy) On west side of corner stone, set an iron post, 3' long, 1" diameter, 28" in the ground with brass cap marked
2. Found brass cap as described and mound of stone to south of cap.
3. Placed 54-4 Attention sign on wood corner fence post 0.5' south of cap. Corner is at intersection of fences, north-south and east, +500' east of Smith Rd. #814.



SKETCH OF CORNER

CERTIFICATION

I, Steven J. Tesch
certify the information shown herein is true and correct.

Steven J. Tesch
* Signatory Registered Party Chief

I, Curtis W. Claesoe
certify that this Corner Record correctly represents work performed by me or under my direction in compliance with the "Corner Recordation Act," (70-2-101, et seq. M.C.A.)

Curtis W. Claesoe
Signatory Registered Professional Surveyor & Seal

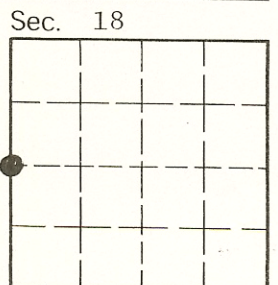
Date: 2/8/88 Reg. No. 9103-ES

Employer: USDA - Forest Service

Office of Clerk and Recorder, County of Carter. This "corner record" was filed for record on March 3, 1988 was noted on the cross-index plat and is assigned page No. 163, in book No. 1

Sandra Linkwood, Deputy Clerk Rec.
County Official

Cross Index No. F-1 T. 1N R. 58E P.M.M.



• - corner this sheet