

INSTRUCTIONS

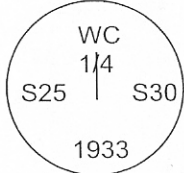
1. Original and/or subsequent record used to evaluate the corner position.
2. Description of evidence found, note discrepancies in the record, state method of establishing lost or obliterated corners.
3. Description of monument and accessories set to perpetuate the corner position.
4. Sketch of corner, show all pertinent data which can best be shown in sketch example, corner marking, topography ties, position of accessories, etc.
5. Certification must be signed and sealed by Land Surveyor registered in the State of Montana.
6. Fill in Cross Index & Section Diagram at bottom of sheet.

CERTIFIED CORNER RECORDATION

Corner: East 1/4 Section 25 Witness Corner T. 1 N. R. 58 E. P.M.M. Carter County

RECORD:

1933 - Resurvey by William R. Bandy and Ernest Parker: "Set an iron post, 3 ft. long, 1 in. diam., 30 ins. in the ground, as a witness corner for the 1/4 sec. cor., with brass cap marked,



from which

- A pine, 12 ins. diam., bears N. 27 1/4° E., 277 lks. dist, mkd. WC 1/4 S 30 B T
- A pine, 10 ins. diam., bears S. 51 1/4° W., 118 lks. dist, mkd. WC 1/4 S 25 B T

FOUND:

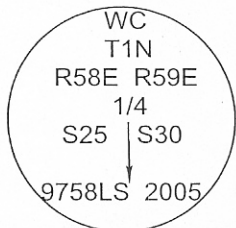
April, 2005 - No monument found, found 2 live bearing trees:

- 15 inch pine bears N. 27° E., 182.8 ft., scribing visible
- 14 inch pine bears S. 51° W., 77.9 ft., scribing visible.

Reestablish witness corner at intersection of record horizontal distances from bearing trees. Reestablish the computed position for true 1/4 corner at single proportionate measurement between the witness corner and the southeast corner of Section 25.

PERPETUATION:

Set a 2-3/8 x 30-inch stainless steel pipe, 22 inches in the ground to refusal, with 3-1/4-inch USFS bronze cap marked



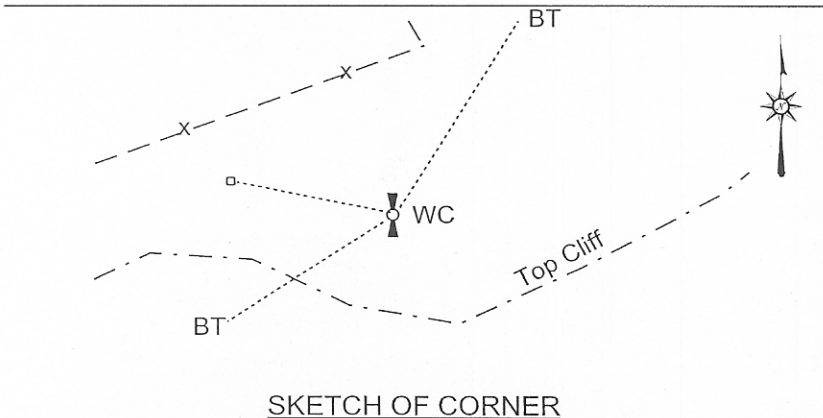
Attached 54-3 and 54-9 signs to bearing trees, painted the blazes red and a red band above signs, and placed a nail on the side of bearing trees for measurement.

Set a 5-foot red angle iron post with 54-2 and 54-9 decals alongside corner.

Witness corner falls 10 ft. north of top of cliff and 27 ft. south of east-west fence line; S. 84° E., 36.5 ft from a USFS control point rebar with a yellow plastic cap; and 75 ft. southeast of a communication tower.

True corner bears S6°33'42"E, 91.90 feet from the witness corner. True corner not monumented.

Project: 0916.060 Ekalaka Hills



SKETCH OF CORNER

CERTIFICATION

I, Gunnar B. Getchell
certify the information shown herein is true and correct.

Signature Ground Party Chief

I, Gunnar B. Getchell
certify that this Corner Record correctly represents the corner monumented by me or under my direction in compliance with the "Corner Recordation Act" (77-22-101, et seq., M.C.A.)

Gunnar B. Getchell
Signature of Surveyor & Recorder

Date: 29Aug05 Reg. No. 9758 LS

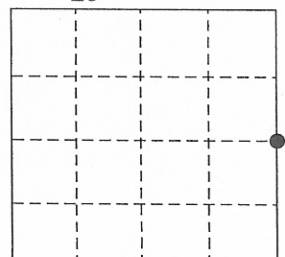
Employer: Morrison-Maierle, Inc.

Office of Clerk and Recorder, County of Carter. This "corner record" was filed for CARTER COUNTY Recorded 05/03/2006 At 03:00 AM by Pamela J. Castleberry, Clk & Rcdr By Virginia Ludwig was noted on the c Return to: COUNTY CORNER RECORDS in book No. _____

County Official

Cross Index No. T-25 T. 1 N. R. 58 E. P.M.M.

Sec. 25



• - corner this sheet