

INSTRUCTIONS

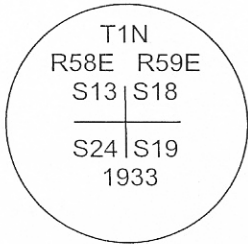
1. Original and/or subsequent record used to evaluate the corner position.
2. Description of evidence found, note discrepancies in the record, state method of establishing lost or obliterated corners.
3. Description of monument and accessories set to perpetuate the corner position.
4. Sketch of corner, show all pertinent data which can best be shown in sketch example, corner marking, topography ties, position of accessories, etc.
5. Certification must be signed and sealed by Land Surveyor registered in the State of Montana.
6. Fill in Cross Index & Section Diagram at bottom of sheet.

CERTIFIED CORNER RECORDATION

Corner: NW Corner Section 19 T. 1 N. R. 59 E. P.M.M. Carter County

RECORD:

1933 - Resurvey by William R. Bandy and Ernest Parker: "Set an iron post, 3 ft. long, 3 ins. diam., 30 ins. in the ground, with brass cap marked,



dug pits, 18x18x12 ins. in each sec., 3 ft. dist."

FOUND:

April, 2005 - GLO brass cap monument firmly set 8 inches above ground, marked as shown above.

Location poster on 8 in. corner fence post bears N. 86° E., 31.7 ft.

Loacation poster on 4 in. fence post bears N. 24° E., 87.0 ft.

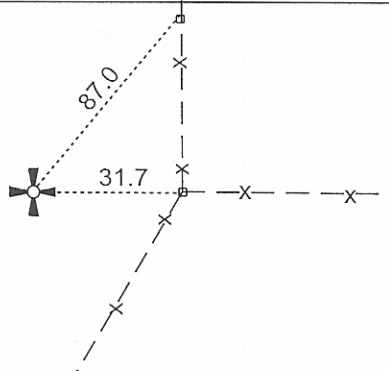
PERPETUATION:

Set a 5-foot red angle iron post with 54-2 and 54-9 decals alongside corner.

Corner falls in open field west of fence intersection.

See Certificate of Survey No. _____ for adjacent corner ties.

Project: 0916.060 Ekalaka Hills



SKETCH OF CORNER

CERTIFICATION

I, Gunnar B. Getchell certify the information shown herein is true and correct.

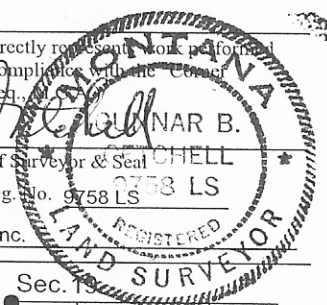
Signature Ground Party Chief

I, Gunnar B. Getchell certify that this Corner Record correctly represents work performed by me or under my direction in compliance with the "Corner Recordation Act" (77-22-101, et seq.)

Gunnar B. Getchell Signature of Surveyor & Seal

Date: 29Aug05 Reg. No. 9758 LS

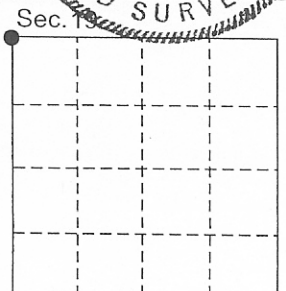
Employer: Morrison-Maierle, Inc.



Office of Clerk and Recorder, County of Carter, in the NW corner
 record" was filed for Pamela J. Castleberry, Clk & Rcdr By Virginia Fedwick
 was noted on the cr Return to: COUNTY CORNER RECORDS, in
 book No. _____

County Official

Cross Index No. N-1 T. 1 N. R. 59 E. P.M.M.



● - corner this sheet