

# CERTIFIED CORNER RECORDATION

Corner Closing corner common to Sections 7 & 18 T. 1 S R. 33 E P.M.M. Big Horn County

ORIGINAL RECORD: (Blake, 1882) Set a sandstone, 18 x 10 x 6 ins. 12 ins. in the ground for cor. to sec. 7, 12, 13 & 18. stone is marked 2 notches on W. and 4 on S. edges. dig pits, 18 x 18 x 12 ins. in each section. 5 1/2 ft. dist. and raised a mound of earth 2 ft. high. 1 1/2 ft. base along side.

SUBSEQUENT RECORD: (Lampert, 1905) Set a sandstone, 18 x 8 x 4 ins., 12 ins. in the ground, for cor. of secs. 7, and 18, marked with 4 notches on S., and 2 notches on N. edges: dig pits 24 x 24 x 12 ins., in each sec. 6 ft. dist., and raised a mound of earth 4 ft. base, 2 ft. high, East of cor.

SUBSEQUENT RECORD: (Scott & Humphrey, 1950) The cor. of secs. 7, and 18 marked by the monument set in the 1905 re-establishment, a sandstone, 16x16x3 ins. plainly marked, buried 4 ins. below the surface of the ground, at the corner of graded roads bearing N., and E.

At the corner point  
Set an iron post, 28 ins. long, 2 1/2 ins. diam., 34 ins. in the ground, with brass cap mkd. encircle the iron post with a copper wire ring, 12 ins. diam. and bury the corner stone on the E. side of the iron post from which  
Bench mark D-110 of the U.S. Bureau of Reclamation, an iron pipe, 2 ins. diam., 4 ins. above ground, set with a white guard stake, bears S. 61°W., 48.5 lks. (32.0 ft.) dist.

T 1 S	T 1 S
R 32 E	S 7
S 12	S 18
	R 33 E

1950

An iron post, 28 ins. long, 2 1/2 ins. diam., set 24 ins. in the ground, for a reference monument, bears N46°30' W., 40.8 ft. dist., with brass cap mkd. RM 40.8 FT 1950 and an arrow pointing to the true cor.

EVIDENCE: Found brass cap as described in subsequent record.

PERPETUATION: NONE

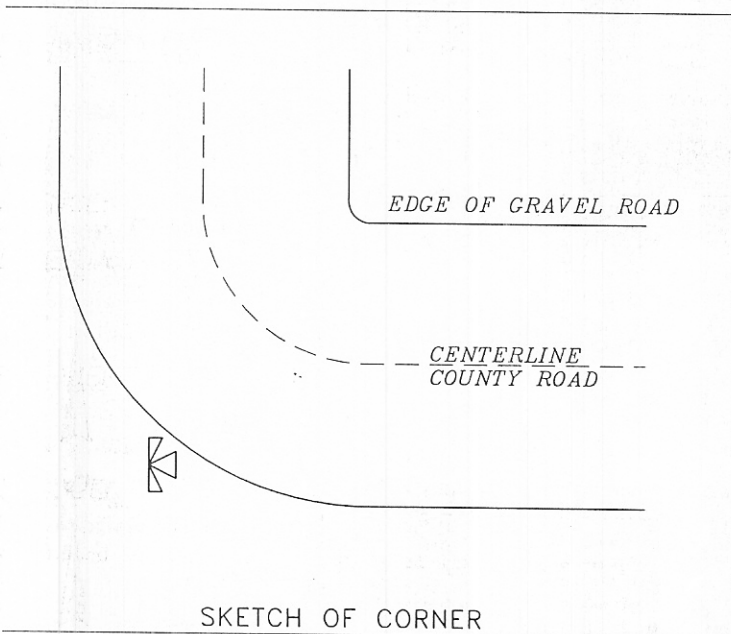
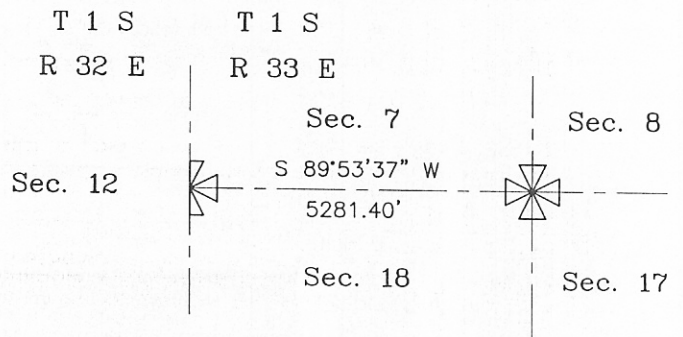


Section corner found



Closing corner found

NOT TO SCALE



SKETCH OF CORNER

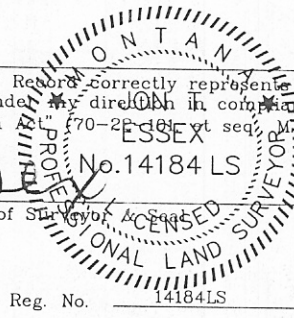
### CERTIFICATION

I, \_\_\_\_\_  
certify the information shown herein is true and correct.

Signature Ground Party Chief

I, J.T. Essex  
certify that this Corner Record correctly represents work performed by me or under my direction in compliance with the "Corner Recordation Act" (70-22-101 et seq., M.T.A.)

J.T. Essex  
Signature of Surveyor  
No. 14184 LS



Date: June 2007 Reg. No. 14184LS

Employer: Interstate Engineering Inc.

Office of Clerk and Recorder, County of BIG HORN. This "corner

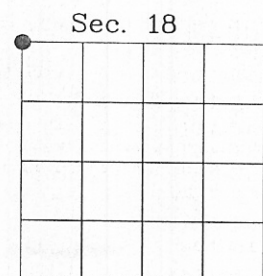
record" was filed for record on \_\_\_\_\_

was noted on the cross-index plat and is assigned page No. 54, in

book No. 4

Linda K. Maxwell  
County Official

Cross Index No. J1 - T 1 S R 33 E P.M.M.



● corner this sheet

Adopted July 1, 1981, Montana Board of Professional Engineers & Land Surveyors

STATE OF MONTANA 338803  
County of Big Horn

The within instrument was filed in my office at Hardin, Montana, this 3/5/2008 at 3:48 PM

Linda K. Maxwell  
County Recorder  
By [Signature] Deputy