

CERTIFIED CORNER RECORDATION

Corner 1/4 Corner common to Sections 16 & 17 T. 1 S R. 33 E P.M.M. Big Horn County

ORIGINAL RECORD: (Blake, 1883) Set a post 4 ft. long 5 ins. sq. with marked stone 12 ins. in the ground for 1/4 sec. cor. marked 1/4 S. on W. face dug pits 18 x 18 x 12 ins. North and South of post. 5 1/2 ft. dist. and raised a mound of earth 1 1/2 ft. high. 3 1/2 ft. base around post.

SUBSEQUENT RECORD: (Lamport, 1905) Set a sandstone, 15 x 10 x 4 ins., 10 ins. in the ground, for 1/4 sec cor., marked 1/4 on W. face. dig pits 18 x 18 x 12 ins. N. and S. of stone 3 ft. dist., and raised a mound of earth 3 1/2 ft. base, 1 1/2 ft. high, West of cor.

SUBSEQUENT RECORD: (Scott & Humphrey, 1950) The 1/4 sec. cor. of secs. 16 and 17 marked by the monument set on the 1905 re-establishment, a sandstone, 12 x 10 x 3 ins., plainly marked., buried 8 ins. below the surface of the ground in the center of the road and in line with a fence bearing w.

At the corner point

Set an iron post, 28 ins. long, 2 1/2 ins. diam., 34 ins. in the ground, with brass cap mkd.



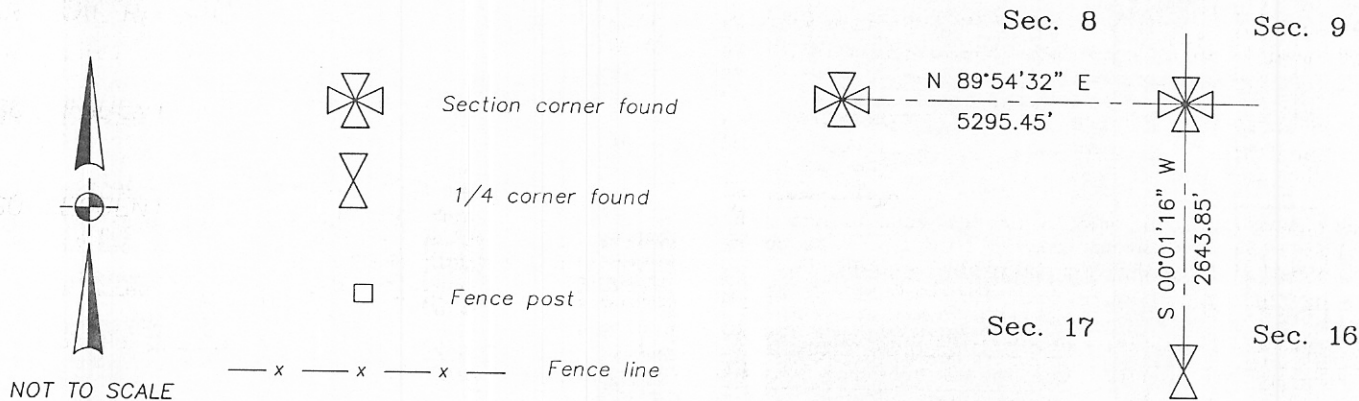
encircle the iron post with a copper wire ring, 12 ins. diam., and bury the corner stone on the W. side of the iron post.

An iron post, 28 ins. long, 2 1/2 ins. diam., set 24 ins. in the ground, for a reference monument, bears S46°15'E., 39.8 ft. dist., with brass cap mkd. S16 RM 39.8 FT 1950 and an arrow pointing to the true cor.

An iron post, 28 ins. long, 2 1/2 ins. diam., set 24 ins. in the ground, for a reference monument, bears S44°30'W., 41.9 ft. dist., with brass cap mkd. S17 RM 41.9 FT 1950 and an arrow pointing to the true cor.

EVIDENCE: Found brass cap as described in subsequent record.

PERPETUATION: NONE



CERTIFICATION

I, _____ certify the information shown herein is true and correct.

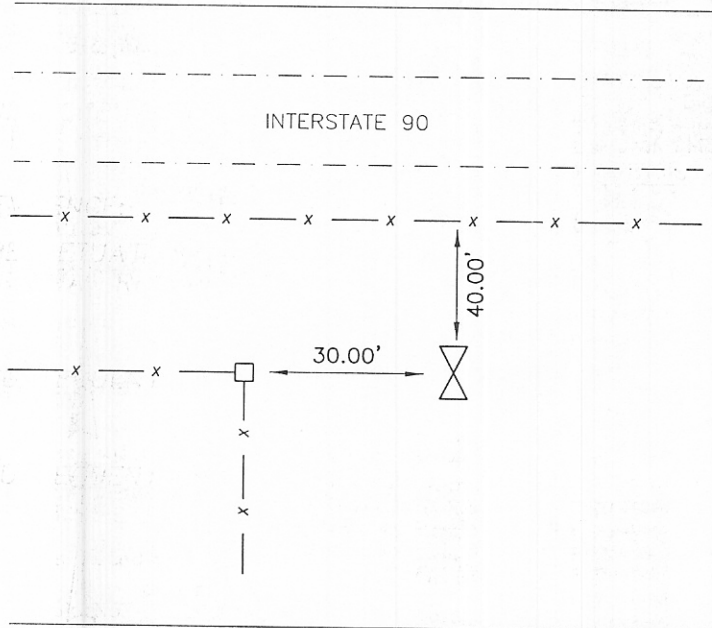
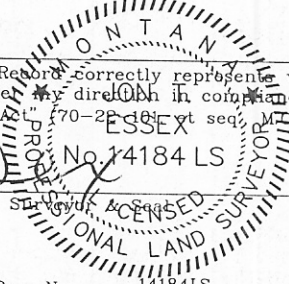
Signature Ground Party Chief

I, J.T. Essex certify that this Corner Record correctly represents work performed by me or under my direction in compliance with the "Corner Recordation Act" (70-22-101 et seq., M.C.A.)

Signature of Surveyor J.T. Essex No. 14184 LS

Date: June 2007 Reg. No. 14184LS

Employer: Interstate Engineering Inc.



Office of Clerk and Recorder, County of Big Horn. This "corner

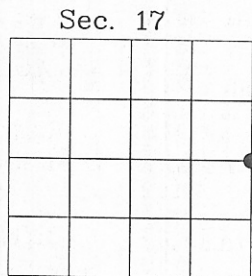
record" was filed for record on _____

was noted on the cross-index plat and is assigned page No. 57, in

book No. 6

[Signature]
County Official

Cross Index No. L9 - T 1 S R 33 E P.M.M.



● corner this sheet

Adopted July 1, 1981, Montana Board of Professional Engineers & Land Surveyors

STATE OF MONTANA 338806
County of Big Horn

The within instrument was filed in my office
at Hardin, Montana, this 7/5/2008 at 2:54 PM

[Signature] County Recorder
[Signature] Deputy