

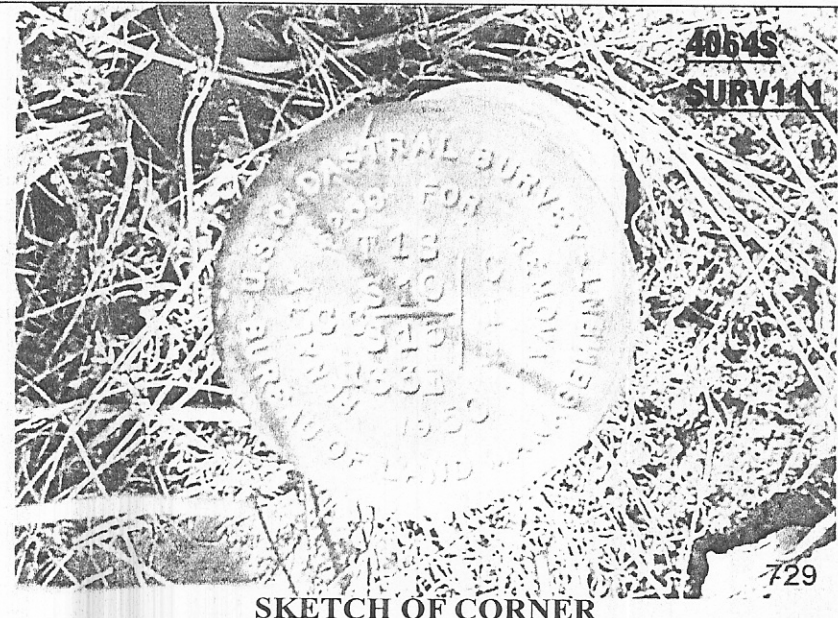
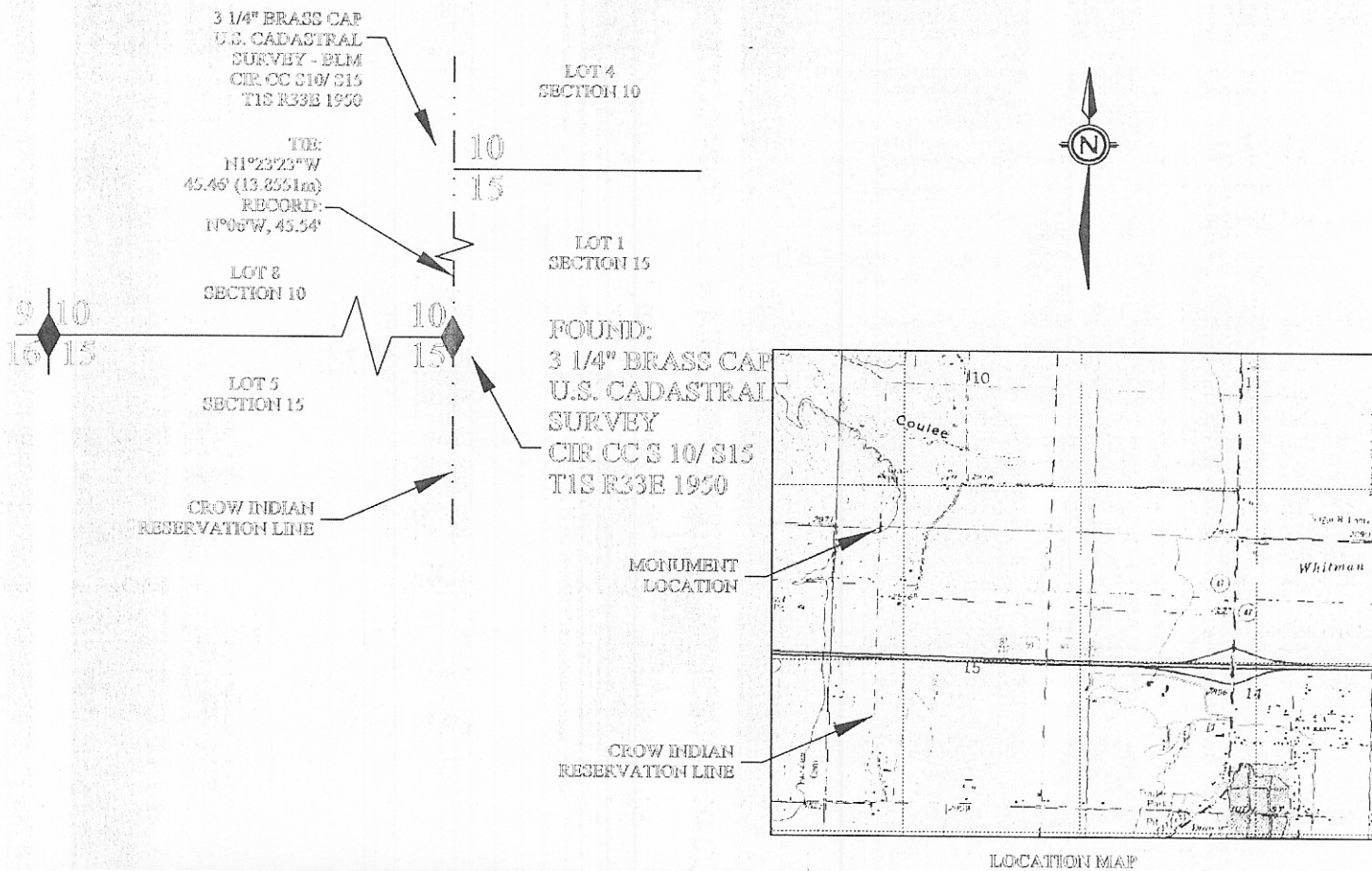
1. Original subsequent record to evaluate the corner position.
2. Description of evidence found, note discrepancies in the record, state method of establishing lost or obliterated corners.
3. Description of monument and accessories set to perpetuate the corner position.
4. Sketch of corner, show all pertinent data which can best be shown in a sketch example, corner marking, topography ties, position of accessories, etc.
5. Certification must be signed and sealed by Land Surveyor registered in the State of Montana.
6. Fill in Cross Index & Section Diagram at bottom of sheet.

CERTIFIED CORNER RECORDATION

Corner CC S10/ S15 T. 1S R. 33E P.M.M. Big Horn County

RECORD: AN IRON POST, 28 INCHES LONG, 2 1/2 INCH DIAMETER, SET 24 INCHES IN THE GROUND WITH A BRASS CAP MARKED "CC CIR S10/ S15 T1S R33E, 1950". COS 150CB, COS 303 SHOWS BRASS CAP IN PLACE.

FOUND: MONUMENT AS DESCRIBED AND SHOWN BELOW.



CERTIFICATION

I, _____
 Certify the information shown herein is true and correct.

Signature Ground Party Chief

I, _____
 certify that this Corner Record correctly represents work performed by me or under my direction in compliance with the the "Corner Recordation Act" (70-22-101, etc.), M.C.A.

Signature of Surveyor & Seal
 S. D. DAWSON
 No. 14310 LS
 MONTANA LICENSED SURVEYOR

Date: 11-22-01 Reg. No. 4516CS

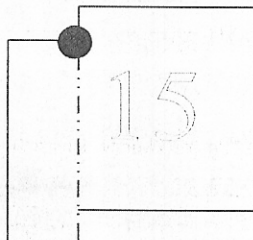
Employer: WASHINGTON GROUP

Office of Clerk and Recorder, County of _____ This "corner record" was filed for record on JAN 04 2002 was noted on the cross-index plat and is assigned page no. _____, in book no. _____

Lynda J. Maxwell

 County Official

Cross Index No. 2-17 T. 1S R. 33E PMM



• - Corner this sheet