

INSTRUCTIONS

1. Original or subsequent record to evaluate the corner position.
2. Description of evidence found, note discrepancies in the record, state method of establishing lost or obliterated corner.
3. Description of monument and accessories set to perpetuate the corner position.
4. Sketch of corner, show all pertinent data which can best be shown in a sketch example, corner marking, topography ties, position of accessories, etc.
5. Certification must be signed and sealed by Land Surveyor registered in the State of Montana.
6. Fill in Cross Index & Section Diagram at bottom of sheet.

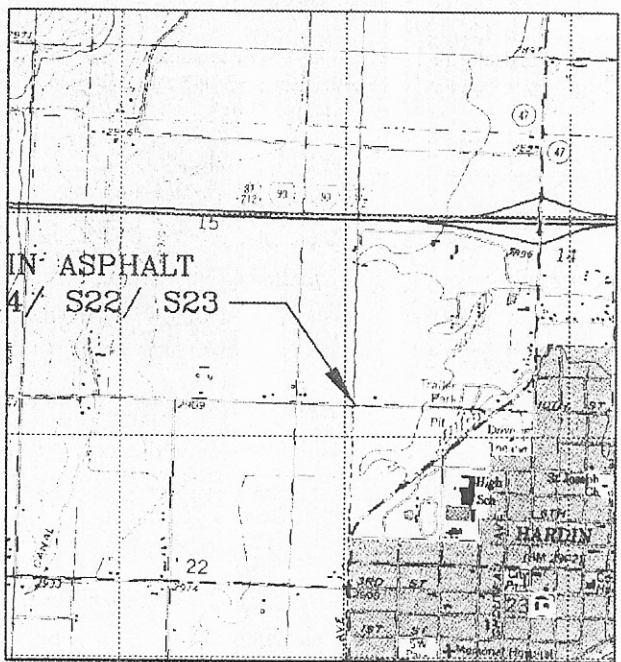
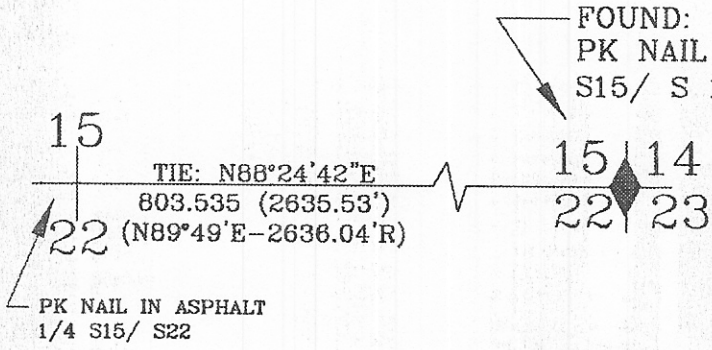
326266

CERTIFIED CORNER RECORDATION

Corner S15/ S14/ S22/ S23 T. 1S R. 33E P.M.M. Big Horn County

RECORD: AN IRON POST, 28 INCHES LONG, 2 1/2 INCH DIAMETER, SET 24 INCHES IN THE GROUND WITH A BRASS CAP MARKED "CC / CIR S15/ S14/ S22/ S23/ T1S / R33E // 1950".

FOUND: MONUMENT AS DESCRIBED AND SHOWN BELOW.



FOUND= PK NAIL IN ASP / 2.95' (0.9m) N OF CR



CERTIFICATION

I, _____
Certify the information shown herein is true and correct.

Signature Ground Party Chief
DAWSON

I, _____
certify that this Corner Record correctly represents work performed by me or under my direction in compliance with the Corner Recordation Act (70-22-101 et seq., M.C.A.)

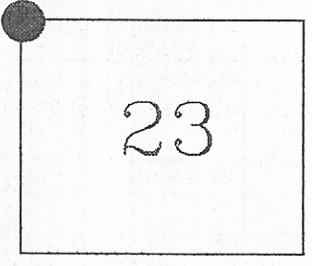
Signature of Surveyor & Seal
[Seal]

Date: 11-28-01 Reg. No. 14516LS

Employer: WASHINGTON GROUP

Office of Clerk and Recorder, County of _____ This "corner record" was filed for record on JAN 04 2002 was noted on the cross-index plat and is assigned page no. _____, in book no. _____

[Signature]
County Official



Cross Index No. N-17 T. 1S R. 33E P.M.M.