



3472178

Page: 1 of 1
07/08/2008 02:10P

3898

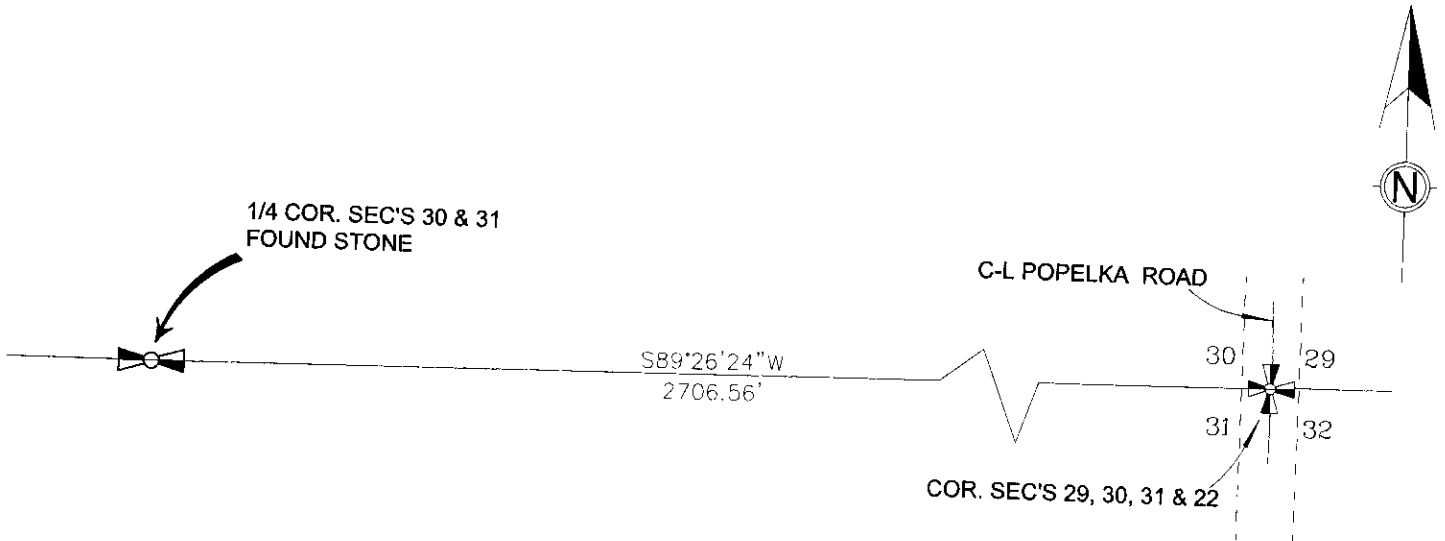
CERTIFIED CORNER RECORDATION

Corner 1/4 SECTIONS 30 & 31 T. 2 N. R. 24 E. P.M.M. YELLOWSTONE County

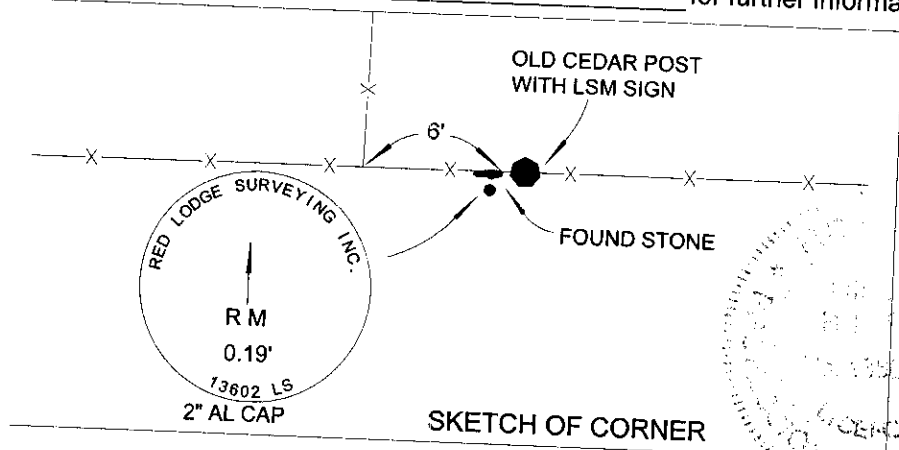
Original: PER GLO SURVEY VIA LAMPORT, 1891, SET A SANDSTONE 14X8X4 INS., 10 INS. IN THE GROUND. MARKED 1/4 ON NORTH FACE, DUG PITS 18X18X12 INS. EAST & WEST OF STONE 5 1/2 FT DISTANT AND RAISED A MOUND OF EARTH ALONGSIDE.

Evidence: FOUND FIRMLY SET STONE MARKED 1/4 ON NORTH FACE IN EAST/WEST FENCE ALONG EAST SIDE OLD CEDAR POST

Perpetuation: SET 2" AL. CAP STAMPED RM A DISTANCE OF 0.19', S29°01'30"W FROM FOUND STONE & NAILED L.S.M. SIGN IN OLD CEDAR POST EAST OF STONE.



See Certificate of Survey Number 3277 for further information



CERTIFICATION

I, BRENT NEARPASS
certify the information shown herein is true and correct.

Brent Nearpass
Signature Ground Party Chief

I, WILLIAM H. KARAS
certify that this Corner Record correctly represents work performed by me or under my direction in compliance with the "Corner Recordation Act" (70-22-101, et seq., M.C.A.)

William H. Karas
Signature of Surveyor & Seal

Date: Feb. 2006 Reg. No. 13602 LS

Employer: RED LODGE SURVEYING INC.

Office of Clerk and Recorder, County of Yellowstone

This "corner record" was filed for record on _____
was noted on the cross-index plat and is assigned page No. _____

In book No. _____

County Official _____

Cross Index No. V-3 T. 2 N. R. 24 E. P.M.M.

Adopted July 1, 1981, Montana Board of Professional Engineers & Land Surveyors

