

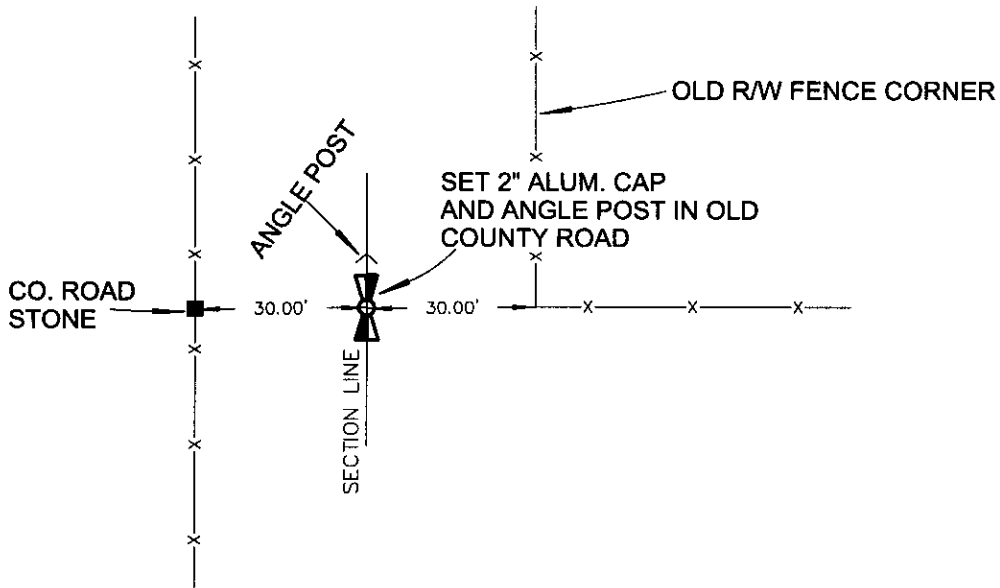
# CERTIFIED CORNER RECORDATION

Corner W1/4 SEC. 33 T. 2N. R. 24E. P.M.M. YELLOWSTONE County

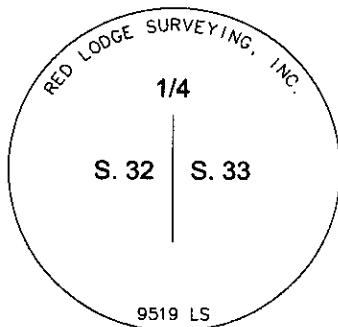
Original: Record per. 1891 GLO by George T. Lamport; Set a sandstone 15x10x4, 10 ins. in the ground for 1-4 Sec. Cor marked 1-4 on W. face, dug pits 18x18x12 ins. N. & S. of stone 5 1-2 ft. distance and raised a mound earth 4 1-2 ft. high, 3 1-2 ft. base alongside.

Evidence: No trace of original stone found. Corner falls in old county road extending N. & S.

Perpetuation: Corner position established per county road stone to the west and old fence corner to the east. Set 2" alum cap and 5' angle post in centerline of old county road.



See Certificate of Survey Number \_\_\_\_\_ for further information



SKETCH OF CORNER

CERTIFICATION

I, Brent Nearpass  
 certify the information shown herein is true and correct.

*Brent Nearpass*  
 Signature Ground Party Chief

I, Neil A. Bratton, Jr.  
 certify that this Corner Record and its contents were performed by me or under my direction in compliance with the "Corner Recordation Act" (M.C.A. 70-2-101, et seq.)

*Neil A. Bratton, Jr.*  
 Signature of Surveyor & Seal

Date: 5-4-2005 Reg. No. 35018

Employer: Red Lodge Surveying, Inc.

Office of Clerk and Recorder, County of Yellowstone



**3340755**

Page: 1 of 1  
07/19/2005 02:41P

In book no. \_\_\_\_\_

County Official \_\_\_\_\_

Cross Index No. X-9 T. 2N. R. 24E. P.M.M.

Section 33


● corner this sheet